

**ZWT** RANCH

FULLY *Loaded*

ANGUS BULL & FEMALE SALE

> Noon / Thursday / **November 9, 2023**  
Crossville, TN









Tony, Mary, Zach, Wil and Tate Mayes, Owners  
1253 McClanahan Drive, Crossville, TN 38571

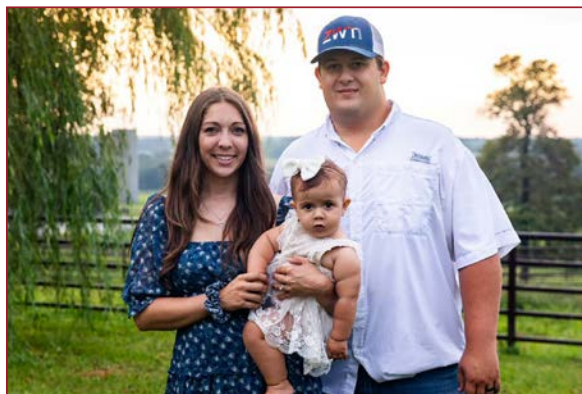
Wil Mayes (304) 619-9327

zwtranch2020@gmail.com

Dallas Woltemath (308) 390-6400

woltemathcattle@gmail.com

Website: [www.zwtranch.com](http://www.zwtranch.com)



Elizabeth, Ryleigh & Wil Mayes



Zach and Bethany Mayes

Dear Friends,

We would like to invite you to attend this year's ZWT Ranch Fully Loaded Angus Bull and Female Sale! This year's sale has been in the making for some time now. We have been working diligently on breeding and selecting the best cattle we've ever raised to sell to you on November 9th!

We'll begin by thanking you for taking the time to look over this year's book. We are excited to be offering you the best set of bulls we've ever had in a public auction. These bulls have been hand selected and will work for you. When you are sorting through these bulls on sale day, I think you will notice the excitement within the program. This is due to our thorough breeding philosophy that we have hyper focused over the years.

In the female line up of this fall's sale we are coming at you with the heart of the program. We will be selling daughters of A list donors unlike anything you have ever seen. There are features out of Elba 247, Judy 6535, Patsy A13, Blackcap May F697 and Rose 918! From top to bottom, we have selected the best cattle possible that will help elevate your breeding program. Don't miss out on adding one of these tremendous females to your herd!

If you have any questions about this year's sale cattle, please give us a call. We will gladly help and answer any questions you might have. Thanks again, and we look forward to seeing you on November 9th at the Ranch!

The Mayes Family.



### SALE LOCATION:

1253 McClanahan Drive, Crossville, TN 38571

### DIRECTIONS TO SALE SITE:

From Interstate 40, take Exit 311 and go north ½ mile. Entrance is on the right. Drive east on the gravel road from entrance 1.5 miles to sale facility.

### SALE DAY PHONES:

Tom Burke (816) 853-2697  
Kurt Schaff (816) 520-6447  
Alex Popplewell (270) 566-8822  
Wil Mayes (304) 619-9327  
Dallas Woltemath (308) 390-6400

### ACCOMMODATIONS:

Crossville, TN  
*ZWT has blocked off rooms at Holiday Inn Express and Hampton Inn on exit 322 with special rates. The other hotels listed can be additional places to stay but won't have a special rate.*  
Comfort Suites (Exit 322) (931) 707-8638  
Super 8 (Exit 322) (931) 707-7660  
Holiday Inn Express (Exit 322) (931) 707-1035  
Quality Inn (Exit 317) (931) 484-1551

### FOOD AND REFRESHMENTS:

Will be available Wednesday evening and sale day.

### SALE VIDEO:

Will be available for viewing at [zwtranch.com](http://zwtranch.com)

### SALE CIRCUIT:

Thursday, ZWT; Friday, Ingram; Saturday, Deer Valley and Decades of Excellence.

### AUCTIONEER:



Ron Kreis  
(740) 683-3235  
TN #6090

### SALE MANAGER:

American Angus Hall of Fame (816) 532-0811  
Tom Burke Kurt Schaff Alex Popplewell  
(816) 853-2697 (816) 520-6447 (270) 566-8822



Buyers unable to attend the sale may send their bids to the sale manager, regional manager, field representatives or auctioneer.

### RING SERVICE:

Alex Tolbert, *Angus Journal* (706) 338-8733  
Terry Cotton, Special Assignment (816) 390-3227  
Corbin Cowles, *The Stockman* (270) 991-2534  
Eric Lee, *Stockyard Media* (608) 295-5312  
Chris Beutler, *Livestock Digital* (402) 380-8244

### SALE CONSULTANTS:

Tyler Copeland (870) 450-4089  
Lance Cline (785) 564-1744 Black & Red LLC  
Kelvin Jorgensen (402) 366-9475  
Mike Marlow (405) 880-0108, Marlow Cattle Services  
Eric Lee (608) 295-5312, Stockyard Media  
Kent McCune (817) 602-8629  
Sam Edwards (865) 719-6008  
Scott Bohrsen, Bohrsen Marketing Services, Ltd. (403) 370-3010  
Taylor Richards, Bohrsen Marketing Services, Ltd. (306) 821-4169  
Gary Wall (402) 208-8536

**AM** EPDs contained in the hard copy of this sale book were current as of print date. Digital versions of this sale book can be viewed online at [www.angus.org](http://www.angus.org) and will have EPDs updated every Friday with the exception of EPD references in footnotes and photos. Any PDF downloads from the website will contain EPDs current as of the date downloaded. References: American Angus Association®, AHIR®, AngusLinkSM, CAB®, Pathfinder®.



**TERMS AND CONDITIONS:**

Cattle will sell under the terms and conditions as recommended by the American Angus Association, including payment upon purchase. ALL PURCHASES MUST BE PAID FOR IN FULL PRIOR TO LOAD OUT – NO EXCEPTIONS. PAST DUE ACCOUNTS ARE SUBJECT TO A 2% MONTHLY FINANCE CHARGE AND BOARDING FEES. Health paper fees will be the buyer's responsibility on any cattle left after 30 days. Selling 2/3 interest and full possessions in all bulls unless otherwise noted. Embryos and flushes sell with 50% conception guarantee.

**LIABILITY:**

All persons who attend this sale do so at their own risk, legal or otherwise, for their safety or for the behavior of the animals. The owners, sale management firm, and the sale staff assume no liability for property loss or any accident that may occur.

**HERD HEALTH:**

Cattle will be accompanied by health certificates for interstate shipment.

**TRUCKING:**

Free trucking will be offered on all registered purchases totaling \$5,000 or more. ZWT will coordinate this delivery to central locations such as livestock markets, etc. If you pick up registered bulls or females from Sale Day through Monday, November 13<sup>th</sup> you will receive a \$100/head discount.

**LIVESTOCK MORTALITY INSURANCE:**

James Bessler of Great American Insurance Group will be available to assist with mortality insurance at the buyer's option. (815) 762-2641.

**SUPPLEMENTAL INFORMATION:**

A supplemental sheet will be available sale day with sale order and update information. Announcements from auction block will take precedence over printed material. Current EPD and genetic recessive information is available online. TN enhancement information available sale day.

**ONLINE BIDDING:****COMMENTS FROM THE SALE MANAGER:****THE DEEPEST OFFERING EVER AT ZWT**

Tom Burke  
(816) 853-2697



Kurt Schaff  
(816) 520-6447



Alex Popplewell  
(270) 566-8822

Dear Angus Friends,

Plan now to be on hand Thursday, November 9, 2023, for the deepest offering ever from ZWT. The annual ZWT Production Sale always promises to be a highlight of the sale season, and this year is no exception. A power-packed offering of both Angus females and bulls will sell.

The Angus females are from the breed's leading cow families and features sterling pedigrees. They have been specially selected from the very top of the ZWT program to offer the upmost in foundation quality for their new owners. The possibilities are endless.

The bull offering is strictly top-cut with powerful selection of two-year-old, coming two-year-old and fall yearling bulls that represent the very best produced at ZWT. Many of these bulls are siblings to the females who sell. They are the kind to be building blocks in strong commercial and registered operations. Tony and Wil Mayes, along with Dallas Woltemath and their family and crew, are dedicated to their customers and to the Angus breed. Plan now to be part of this landmark event.

Please don't hesitate to call on us at American Angus Hall of Fame if we can be of assistance with your selection decisions. We are here to serve.

Sincerely,

A handwritten signature of Tom Burke in black ink.

Tom Burke  
(816) 853-2697

A handwritten signature of Kurt Schaff in black ink.

Kurt Schaff  
(816) 520-6447

A handwritten signature of Alex Popplewell in black ink.

Alex Popplewell  
(270) 566-8822





---

*Angus Females*  
*Lots 1-84*

---

---

*Angus Bulls*  
*Lots 85-143*

---









*ZWT Patsy 3018*  
Lot 1



*The Very Best*



**1 ZWT PATSY 3018**

Birth Date: 01-18-2023 Cow +\*20696539 Tattoo: 3018

#\*Coleman Charlo 0256

+\*S A V Rainfall 6846

18578963 \*S A V Blackcap May 4136

#\*S A V Resource 1441

Pine Coulee Patsy A13

17583446 Pine Coulee Patsy X36

#\*O C C Paxton 730P

+Bohi Abigale 6014

#S A V 8180 Traveler 004

#+S A V May 2397

+Rito 707 of Ideal 3407 7075

\*S A V Blackcap May 4136

BC Classic 385-7

+Pine Coulee Patsy T502

CED	BW	WW	YW	SC	Milk	MB	RE	\$M	\$W
1+4	1+1.7	1+65	1+120	1+.88	1+25	1+.42	1+.79	+67	+61

**SELLING ONE-HALF INTEREST.**

The very best of the ZWT program offered strictly as a sale feature.

This incredible brood cow prospect with massive depth combined with femininity is coupled with a sterling pedigree that combines the proven maternal brothers SAV Rainfall 6846 and SAV Resource 1441.

The donor dam sold one-half interest for \$19,000 as one of the top-sellers of the 2022 ZWT Sale to Beutler Beef and Cattle Company of Nebraska.

The dam of this heifer has a progeny weaning ratio of 103 on three natural calves and a progeny yearling ratio of 104 on one head.

A flush from the dam of this heifer sold as an \$11,750 highlight of the 2021 ZWT Sale to Duff Cattle Company of Oklahoma. Three maternal sisters post a collective progeny weaning ratio of 106.

An outstanding maternal sister is featured as Lot 1A.

The sire of this heifer is the widely-used Select Sires proven sire SAV Rainfall 6846 who is the \$460,000 second top-selling bull from the world record-selling flush of bulls from SAV Blackcap May 4136, the all-time world record income-producing cow with more than \$10.3 million in progeny sales.

The sire of this heifer has ranked in the top three for annual registrations.

The maternal grandsire is the now-deceased Genex Pathfinder Sire SAV Resource 1441 who twice ranked in the top two for annual registrations



**Pine Coulee Patsy A13 – Dam of Lots 1 and 1A.**



**SAV Resource 1441 – Maternal grandsire of Lot 1.**



**SAV Rainfall 6846 – Sire of Lot 1.**

**ZWT**  
RANCH

**GENEX**





*ZWT Patsy 2552*  
Lot 1A



*A New Dimension*



**ZWT PATSY 2552**

Birth Date: 09-07-2022    Cow +\*20729074    Tattoo: 2552

#+S A V Bismarck 5682

**Bar-E-L Natural Law 52Y**

19310190    Bar-E-L Magnolia 143K

#+S A V Resource 1441

**Pine Coulee Patsy A13**

17583446    Pine Coulee Patsy X36

#+\*G A R Grid Maker

S A V Abigale 0451

Bar E L MCC 365 Icon 20H

Double Four Duchess 12G

+Rito 707 of Ideal 3407 7075

\*S A V Blackcap May 4136

BC Classic 385-7

+Pine Coulee Patsy T502

CED	BW	WW	YW	SC	Milk	MB	RE	\$M	\$W
1+2	1+3.1	1+66	1+119	1+91	1+23	1+29	1+78	+49	+53

**SELLING ONE-HALF INTEREST WITH THE OPTION TO  
DOUBLE THE BID TO ACQUIRE FULL OWNERSHIP MINUS 10  
RETAINED EMBRYOS AT THE SELLERS EXPENSE.**

A new dimension of the Patsy family established at ZWT Ranch and developed at Pine Coulee Angus in Montana.

This heifer is from a successful embryo mating by the famous Canadian sire Bar-E-L Natural Law 52Y from the incredible ZWT foundation female Pine Coulee Patsy A13 who records a progeny weaning ratio of 103 on three natural calves and a progeny yearling ratio of 104 on one head.

The dam of this heifer produced an \$11,750 flush in the 2021 ZWT Sale to Duff Cattle Company of Oklahoma, and she sold one-half interest for \$19,000 to Beutler Beef and Cattle Company of Nebraska in the 2022 ZWT Sale.

The dam is regarded as one of the very top daughters of the one-of-a-kind Pathfinder Sire SAV Resource 1441.

Three maternal sister post a collective progeny weaning ratio of 106.

Her maternal sister is featured as Lot 1.



**Pine Coulee Patsy A13 – Dam of Lots 1 and 1A.**

**ZWT**  
RANCH



**SAV Bismarck 5682 – Pathfinder grandsire of Lot 1A.**



**Bar-E-L Natural Law 52Y – Sire of Lot 1A.**



*ZWT Rose 2500*

Lot 2



*Incredible Quality  
and Pedigree*



**2 ZWT ROSE 2500**

Birth Date: 08-01-2022	Cow +*20516042	Tattoo: 2500
#*S A V Renown 3439	+Rito 707 of Ideal 3407 7075	
+*Coleman Glacier 041	*S A V Blackcap May 4136	
19866409	#*GDAR Game Day 449	
	+*Coleman Donna 714	
#*S A V Final Answer 0035	#Sitz Traveler 8180	
*E A Rose 918	S A V Emulous 8145	
16460381	#Sitz Tradition RLS 8702	
E A Rose 738	M A S Bando Rose 4536	

CED	BW	WW	YW	SC	Milk	MB	RE	\$M	\$W
+7	+4	+64	+111	+34	+32	+1.1	+64	+77	+71

**SELLING ONE-HALF INTEREST WITH THE OPTION TO DOUBLE THE BID TO ACQUIRE FULL OWNERSHIP MINUS 10 RETAINED EMBRYOS AT THE SELLERS EXPENSE.**

An incredible combination of quality and pedigree from the forefront of the embryo program at ZWT Ranch.

The donor dam is the \$100,000 valued ZWT foundation donor EA Rose 918 selected from Brooking Angus Ranch in Saskatchewan, Canada, who reigned as the 2014 Canadian Farm Fair International Grand Champion Female as well as the 2014 Prince Albert Exposition Supreme Champion Female and the 2014 Canadian West Agribition RBC Beef Supreme Top Ten Finalist.

The sire of this heifer sold one-quarter interest for \$275,000 in the 2022 Coleman Spring Bull Sale.

A flush sister was selected by Voss Angus of Iowa as the \$37,500 top-selling female of the 2022 ZWT Sale where a maternal sister was selected by Waters Edge of Tennessee as the \$25,000 top-selling cow.

Maternal sisters include the \$30,000 top-selling heifer calf to Voss Angus of Iowa the \$22,000 second top-selling heifer calf to Sandford Ranches of Texas of the 2021 ZWT Sale where the \$29,000 top-selling cow selected by Montana Ranch of Montana had been produced from a maternal sister who was the \$50,000 top-selling Lot 1 female of the 2018 ZWT Sale.

Another maternal sister, Soo Line Rose 1019, produced the \$80,000 ZWT herd sire Brooking Major 7103 and the heifer featured as Lot 3.

Maternal brothers include the proven AI sire Brooking Bank Note 4040; ZWT Intervention 7363, who sold one-half interest for \$42,500 as the top-selling bull of the 2018 ZWT Sale; and ZWT Infusion F182, who sold one-half interest for \$15,000 as the top-selling Lot 1 bull of the 2019 ZWT Sale.

Seven maternal sister post a collective progeny weaning ratio of 104.



**EA Rose 918** – Dam of Lots 2, 85 and 86 and grandam of Lots 3 through 6.



**ZWT Intervention 7363** – Maternal brother to Lots 2, 85 and 86.



**ZWT Infusion F182** – Maternal brother to Lots 2, 85 and 86.



**ZWT Blue Blood 1508** – This maternal brother to Lot 2 is featured as Lot 85.



*ZWT Rose 2506*

Lot 3



*Exceptional Rose*



**ZWT ROSE 2506**

3 Birth Date: 08-14-2022 Cow + \*20700203 Tattoo: 2506

#\*Panther Cr Incredible 6704

**KR Mojo 8520**

19219146 #KR Princess 6394

#\*Soo Line Motive 9016

**\*Soo Line Rose 1019**

19105893 \*E A Rose 918

Musgrave Invision

\*Panther Cr JH Blackbird 409

#\*Kramers Apollo 317

#KR Princess 4386

HF Kodiak 5R

TLA Beauty 5R

#\*S A V Final Answer 0035

E A Rose 738

CED	BW	WW	YW	SC	Milk	MB	RE	\$M	\$W
I+9	I+.2	I+61	I+112	I+.27	I+28	I+.42	I+.69	+69	+63

This exceptional Rose heifer is a maternal sister to the \$80,000 ZWT featured sire Brooking Major 7103, sired by the \$42,500 KR Mojo 8520.

The dam serves as a donor in the Brooking and Rust Mountain View programs and she is a maternal sister to Brooking Bank Note 4040 and to numerous ZWT sale features, stemming from the cherished EA Rose 918 who sold for a \$100,000 valuation.

The sire of this heifer is the top-selling bull from the 2019 Krebs Sale as the most noted son of the now-deceased Pathfinder Sire Panther CR Incredible 6704.

The maternal grandsire is the Canadian-bred Pathfinder Sire Soo Line Motive 9016.



**ZWT Rose G034** – Maternal sister to Lots 2, 85 and 86 and to the dams of Lots 3 through 6.



**ZWT Royalty 1503** – Maternal brother to Lots 2 and 86, full brother to Lot 85, and maternal brother to the dams of Lots 3 through 6.



**Soo Line Rose 1019** – Dam of Lots 3 and 141.



**Brooking Major 7103** – Maternal brother to Lots 3 and 141.



**ZWT Universal 1558** – Featured as Lot 86, he is a maternal brother to Lots 2 and 85 and to the dams of Lots 3 through 6.



*ZWT Rose 2574*

Lot 4



*Promising Fall  
Yearling Rose*





**ZWT Rose 9571** – Produced from a maternal sister to Lots 2, 85 and 86 and to the dams of Lots 3 through 6.

#### 4 ZWT ROSE 2574

Birth Date: 09-12-2022	Cow *20751201	Tattoo: 2574
##*LD Capitalist 316	##*Connealy Capitalist 028	
*Musgrave 316 Colossal 137	LD Dixie Erica 2053	
18774441 ##*Musgrave Lady Barbara 545	##*Musgrave Big Sky	
	Musgrave Lady Barbara 272	
	##*S A V Renown 3439	
+*ZWT Summitt 6507	+*Coleman Donna 714	
+*ZWT Rose 0566	##*S A V Final Answer 0035	
20402135 *E A Rose 918	E A Rose 738	

CED	BW	WW	YW	SC	Milk	MB	RE	\$M	\$W
+9	-2	+60	+101	N/A	+24	N/A	N/A	N/A	+56

This promising fall yearling heifer by the Semex sire Musgrave 316 Colossal 137 was produced as the first calf from a dam who was a product of the embryo program by the \$40,000 ST Genetics proven sire ZWT Summitt 6507.

The cherished maternal grandam is the \$100,000 valued ZWT foundation donor EA Rose 918.

The mating of the maternal grandsire of this heifer to a \$50,000 maternal sister to the dam of this heifer produced the \$29,000 ZWT Rose 9571.

#### 5 ZWT ROSE 2606

Birth Date: 09-19-2022	Cow 20653147	Tattoo: 2606
##*PVF Insight 0129	##*S A V Brilliance 8077	
*Lafins Marvel 1801	+*PVF Missie 790	
19091613 Lafins Galaxie 3332	+EXAR Consensus 1972B	
	Lafins Galaxie 1241	
	##*Coleman Charlo 0256	
+*S A V Reign 6845	*S A V Blackcap May 4136	
ZWT Rose G023	##*S A V Final Answer 0035	
20376640 *E A Rose 918	E A Rose 738	

CED	BW	WW	YW	SC	Milk	MB	RE	\$M	\$W
+4	+2.7	+66	+115	N/A	+24	N/A	N/A	+70	+53

This fall yearling heifer earned an individual weaning ratio of 109 by the ZWT featured sire Lafins Marvel 1801 as the first calf from a dam by the Genex proven sire SAV Reign 6845. The grandam is the \$100,000 valued EA Rose 918.



**ZWT Rose 2606** – Lot 5

#### 6 ZWT ROSE 2176

Birth Date: 03-23-2022	Cow 20447275	Tattoo: 2176
+*S A V Elation 7899	##*Sinclair Emulation XXP	
+S A V Engage 0859	+*S A V Blackcap May 1782	
19853780 ##*S A V Blackcap May 1808	#S A V Net Worth 4200	
	##*S A V May 2397	
	##*S A V Ten Speed 3022	
+*S A V Speed Zone 7177	##*S A V Blackcap May 5530	
+ZWT Rose G016	##*S A V Final Answer 0035	
20092709 *E A Rose 918	E A Rose 738	

CED	BW	WW	YW	SC	Milk	MB	RE	\$M	\$W
+0	+3.9	+68	+117	N/A	+25	N/A	N/A	+51	+52

This granddaughter of the \$100,000 valued EA Rose 918 is by the ZWT featured sire SAV Engage 0859, from a dam produced in the embryo program by the ZWT herd sire SAV Speed Zone 7177.

**Bred AI to calve March 3, 2024 to ZWT DECLARATION 1551. Examined safe.**



**Brooking Bank Note 4040** – Maternal brother to Lots 2, 85 and 86 and to the dams of Lots 3 through 6.



*Coleman Donna 042*  
Lot 7



*Full Sister to Glacier*



**7 COLEMAN DONNA 042**

Birth Date: 01-10-2020 Cow +\*19857114 Tattoo: 042

+Rito 707 of Ideal 3407 7075 #R R Rito 707  
 #+\*S A V Renown 3439 Ideal 3407 of 1418 076  
 17633839 \*S A V Blackcap May 4136 #S A V 8180 Traveler 004  
 #+GDAR Game Day 449 #+S A V May 2397  
 #+\*Coleman Donna 439 #+Boyd New Day 8005  
 17914042 +\*Coleman Donna 714 #G D A R Miss Wix 474  
 +\*Connealy Onward  
 +\*Coleman Donna 386

CED	BW	WW	YW	SC	Milk	MB	RE	\$M	\$W
+2	+2.7	+60	+116	+75	+25	-16	+63	+73	+50

**SELLING ONE-HALF INTEREST WITH THE OPTION TO DOUBLE THE BID TO ACQUIRE FULL OWNERSHIP.**

A very special opportunity to join ZWT Ranch in the ownership of this flush sister to Coleman Glacier 041, the top-selling bull of the 2022 Coleman Spring Sale where one-quarter interest sold for \$270,000 to Ferree Fitzgerald of Indiana.

A flush from this great young female sold to Montana Ranch as a \$12,000 feature of the 2022 ZWT Sale, where she also produced an \$8,000 pregnancy.

As a member of a successful embryo flush, she was selected as the third top-selling bred heifer of the 2021 Coleman Fall Sale, and other full siblings are working in leading Angus herds, by the Genex Pathfinder Sire SAV Renown 3439.

The \$175,000 Pathfinder Dam balances a progeny birth ratio of 92 with a progeny weaning ratio of 106 on six natural calves and a progeny yearling ratio of 105 on six head, and she is a full sister to the Genex sire Coleman Playmaker 427, stemming from the \$290,000 valued ZWT second-generation donor Coleman Donna 714 and the \$200,000 valued Coleman foundation female Coleman Donna 386.

**Bred to calves November 18, 2023 to KLA RESPECT 186.  
 Examined safe.**



Coleman Glacier 041 – Full brother to Lot 7.



Coleman Donna 386 – Third dam of Lot 7.



Coleman Donna 714 – Grandam of Lot 7.



Coleman Donna 439 – Pathfinder Dam of Lot 7.





**ZWT Donna F131 – Lot 8**

## 8 ZWT DONNA F131

Birth Date: 03-03-2018	Cow +20376637	Tattoo: 131
#S A V 8180 Traveler 004	#Sitz Traveler 8180	
#+MF Net Return 8197	+Boyd Forever Lady 8003	
16036822 +S A V May 2436	+S A F 598 Bando 5175	
	#S A V May 6269	
	#Connealy Lead On	
	Altune of Conanga 6104	
	#Basin Rainmaker 654X	
	+KMK Donna J311	

CED	BW	WW	YW	SC	Milk	MB	RE	\$M	\$W
+8	+6	+49	+86	+62	+27	+16	+48	+83	+55

The first of two maternal sisters produced in the embryo program from the \$290,000 ZWT foundation donor Coleman Donna 714 who records a progeny birth ratio of 89 combined with a progeny weaning ratio of 115 on four natural calves and a progeny yearling ratio of 112 on three head, along with a 182 daughters in production who post a collective progeny weaning ratio of 102.

**Sells with a heifer calf at side (Lot 8A) calved September 17, 2023 by ZWT ROYALTY 1503.**

## 9 ZWT DONNA 7066

Birth Date: 02-21-2017	Cow +*18878137	Tattoo: 7066
#*S A V International 2020	#*S A V Harvestor 0338	
+*S A V Ignition 5629	#+*S A V Emblynette 5483	
18256861 #+S A V Blackcap May 5530	#B C C Bushwacker 41-93	
	S A V May 7238	
	#Connealy Lead On	
	Altune of Conanga 6104	
	#Basin Rainmaker 654X	
	+KMK Donna J311	

CED	BW	WW	YW	SC	Milk	MB	RE	\$M	\$W
+7	+9	+57	+96	+54	+27	+05	+50	+83	+61

This maternal sister to Lot 8 is also a maternal sister to the \$450,000 record-selling Coleman Bravo 6313, the \$240,000 Coleman Rock 7200, the Select Sires bulls Coleman Regis 904 and Coleman Venture 403, the Genex sires Coleman Knight 209 and Coleman Playmaker 427, the ST Genetics sire Coleman Charlo 3212, plus Coleman Juno 044, Coleman Manning 0299, ZWT Haymaker 3582, ZWT Hayride 3584, ZWT Crockett 3632 and ZWT Brigade 3665.

**Bred to calve November 7, 2023 to ZWT INFUSION F182. Examined safe.**



**Coleman Bravo 6313 – Maternal brother to Lots 8 and 9.**

## 10 RCA DONNA U176

Birth Date: 03-14-2019	Cow *19409212	Tattoo: U176
*Silveiras Conversion 8064	#+BT Crossover 758N	
*BUBS Southern Charm AA31	+EXG Saras Dream 5609 R3	
17853196 *Hickory Hill Erica 009	#*Connealy Stimulus 8419	
	Hickory Hill Erica TA32	
	#+S A V Bismarck 5682	
	S A V Blackcap May 5270	
	#*N Bar Emulation EXT	
	+KMK Donna J311	

CED	BW	WW	YW	SC	Milk	MB	RE	\$M	\$W
+6	+1.4	+61	+100	+1.29	+33	+76	+61	+79	+70

A young cow by the outcross proven sire BUBS Southern Charm AA31 from a dam by the Pathfinder Sire SAV Brilliance 8077. The grandam is a maternal sister to Coleman Donna 386 stemming from KMK Donna J311.

**Sells with a heifer calf at side (Lot 10A) calved October 1, 2023 by ZWT ROYALTY 1503.**



**RCA Donna U176 – Lot 10**





ZWT Summitt 6507 – Maternal brother to Lots 8 and 9.

## 11 ZWT DONNA 2265

Birth Date: 04-08-2022	Cow *20464782	Tattoo: 2265
#*S A V International 2020	#*S A V Harvester 0338	
+*Brooking Major 7103	#*S A V Emblynette 5483	
19148779	#*Soo Line Motive 9016	
	*E A Rose 918	
#*S A V Sensation 5615	#*S A V Registry 2831	
+*ZWT Donna F186	*S A V Blackcap May 4136	
19428870	+*Coleman Donna 714	
	#*Connealy Onward	
	+*Coleman Donna 386	

CED	BW	WW	YW	SC	Milk	MB	RE	\$M	\$W
+6	+4	+54	+97	N/A	+27	N/A	N/A	+66	+51

A yearling daughter of the \$80,000 ZWT herd sire Brooking Major 7103, blending the best of the Donna and Rose families. This female is a granddaughter of the Pathfinder Sires SAV International 2020 and SAV Sensation 5615. The grandam is the \$290,000 valued ZWT foundation donor Coleman Donna 714.

**Bred AI to calve March 3, 2024 to SAV RIVERSIDE 2831.**  
Examined safe.



ZWT Donna 3028 – Lot 13

## 12 ZWT DONNA 2533

Birth Date: 09-04-2022	Cow *20741545	Tattoo: 2533
#*PVF Insight 0129	#*S A V Brilliance 8077	
*Lafins Marvel 1801	+*PVF Missie 790	
19091613	+EXAR Consensus 1972B	
	Lafins Galaxie 1241	
+*ZWT Summitt 6507	#*S A V Renown 3439	
ZWT Donna 0538	+*Coleman Donna 714	
20405835	+*ZWT Valor 4059	
	+*Coleman Donna 386	

CED	BW	WW	YW	SC	Milk	MB	RE	\$M	\$W
+10	+3	+60	+106	N/A	+22	N/A	N/A	+79	+52

This heifer balances an individual birth ratio of 87 with an individual weaning ratio of 104 as the first calf from a two-year-old dam.

This female is backed by the noted sires Lafins Marvel 1801 and ZWT Summitt 6507, stemming from Coleman Donna 386.



ZWT Donna 2533 – Lot 12

## 13 ZWT DONNA 3028

Birth Date: 01-20-2023	Cow 20689528	Tattoo: 3028
+*S A V Rainfall 6846	#*Coleman Charlo 0256	
+*S A V Bloodline 9578	*S A V Blackcap May 4136	
19542324	#*S A V Emblynette 2369	
	+*S A V Emblynette 7566	
*S A V Momentum 9274	#S A V Net Worth 4200	
+*ZWT Donna 6148	+S A V Emblynette 3301	
18516024	+*Coleman Donna 386	
	#Basin Rainmaker 654X	
	+KMK Donna J311	

CED	BW	WW	YW	SC	Milk	MB	RE	\$M	\$W
-3	+3.7	+65	+119	N/A	+24	1+.38	1+.44	+50	+46

A high-performance Donna heifer sired by the \$250,000 SAV Bloodline 9578.

The dam has a progeny weaning ratio of 104 on three calves, and the grandam is the \$200,000 valued Coleman Donna 386.



*Mill Brae FP Joanie 3063*

A flush sells as Lot 14 and  
her daughter sells as Lot 14A.



*ZWT Foundation Donor*



**14 MILL BRAE FP JOANIE 3063**

Birth Date: 01-21-2013 Cow #17630369 Tattoo: 3063

\*Connealy Product 568

#G A R Retail Product

#\*Connealy Final Product

Pride Fine of Conanga 566

15848422 #Ebonista of Conanga 471

#Connealy Deep Canyon 454

Ebonisa of Conanga 5469

#\*S A V Final Answer 0035

#Sitz Traveler 8180

#Mill Brae FA Joanie 9263

S A V Emulous 8145

16429762 +Mill Brae Joanie Ferd 903

#R R Ferdinand 758D

#M B Joanie 8E8 1627

CED	BW	WW	YW	SC	Milk	MB	RE	\$M	\$W
+4	+2.1	+72	+129	+1.38	+28	+27	+57	+53	+66

**SELLING A FLUSH TO THE BULL OF THE BUYER'S CHOICE, CONSISTING OF 6-8 EMBRYOS, WITH A GUARANTEE OF TWO PREGNANCIES.**

PATHFINDER DAM.

The ZWT foundation Pathfinder Dam selected as the \$75,000 top-selling Lot 1 female of the 2022 Montana Ranch sale where her son, Montana Judgement 1083, was the \$180,000 featured bull and daughters included \$35,000 and \$21,000 featured heifers.

A maternal brother, Mill Brae Benchmark 9016, is the Montana Ranch and Schaff Angus Valley proven sire whose first sons averaged \$22,000 in the 2022 SAV Sale including the \$45,000 SAV Bench Press 1363.

This breed treasure records a progeny weaning ratio of 104 and a progeny yearling ratio of 107 on six natural calves along with progeny IMF and ribeye ratios of 101 and 105, respectively, on 20 head after recording individual weaning and yearling ratios of 112 and 117, respectively, along with an individual ribeye ratio of 128.

The dam of this cow is also a Pathfinder Dam and she records progeny weaning and yearling ratios of 104 and 105, respectively, combined with progeny IMF and ribeye ratios of 103 and 111, respectively, on four head.

The famous Pathfinder third dam produced the ABS Global Pathfinder Sire Plowman 1627 of Mill Brae SAR.

**14 ZWT JOANIE**

Birth Date:

Cow Reg.No.Pdg.

#\*S A V Renown 3439

+Rito 707 of Ideal 3407 7075

#\*Coleman Glacier 041

\*S A V Blackcap May 4136

19866409 #\*Coleman Donna 439

#GDAR Game Day 449

+\*Coleman Donna 714

#\*Connealy Final Product

\*Connealy Product 568

#Mill Brae FP Joanie 3063

#Ebonista of Conanga 471

17630369 #Mill Brae FA Joanie 9263

#\*S A V Final Answer 0035

+Mill Brae Joanie Ferd 903

CED	BW	WW	YW	SC	Milk	MB	RE	\$M	\$W
+6	+7	+77	+132	+07	+30	-.30	+.73	+85	+77
+4	+2.1	+72	+129	+1.38	+28	+27	+57	+53	+66

This next generation female from the ZWT embryo program is from the \$75,000 ZWT foundation Pathfinder Dam Mill Brae FP Joanie 3063, sired by Coleman Glacier 041 who sold one-fourth interest for \$270,000.

This heifer is a maternal sister to Mill Brae Benchmark 9106 as well as the \$180,000 Montana Judgement 1038, plus the \$35,000 Montana Joanie 1037 and the \$21,000 Montana Joanie 1041.

This heifer represents the freshest genetics in the ZWT program while stemming from one of the most successful cow families developed in the historic Mill Brae Angus herd in Kansas.



**Mill Brae Benchmark 9016 – Son of the Lot 14 donor.**



**Montana Judgement 1038 – Son of the Lot 14 donor.**



*ZWT Blackcap May 3031*  
Lot 15



*Unique Genetic Blending*



# 15 ZWT BLACKCAP MAY 3031

Birth Date: 01-23-2023 Cow +\*20696513 Tattoo: 3031

+\*BC Surveyor 680D

#\*BC Eagle Eye 110-7

BC Robust 0807

BC 2266 Prides Lass 4132 680

18456252 BC 327-8 CP Belle 0-807

\*BC Pure Pride 327-8

BC 607 CP Belle MF 807

#\*S A V International 2020

#\*S A V Harvester 0338

+\*PVA Blackcap May 4397

#\*S A V Emblynette 5483

17884732 #\*S A V May 2397

#\*S A F 598 Bando 5175

S A V May 7238

CED	BW	WW	YW	SC	Milk	MB	RE	\$M	\$W
1+3	1+2.8	1+64	1+101	1+58	1+17	1-03	1+55	+53	+54

A unique, genetic-blending sired by BC Robust 0807 from the ZWT foundation female PVA Blackcap May 4397, who sold one-half interest for \$20,000 as the top valued Lot 1 cow of the 2022 ZWT Sale to Montana Ranch.

This deep-bodied, thick-topped and very-complete cow prospect features a wonderful disposition and is from one of the deepest and most consistent flushes in ZWT history. The dam records a progeny weaning ratio of 108 on two natural calves, and she is a maternal sister to the all-time, world-record, income-producing cow SAV Blackcap May 4136.



ZWT Blackcap May 3037 – Lot 15A

# 15A ZWT BLACKCAP MAY 3037

Birth Date: 01-24-2023 Cow +\*20696518 Tattoo: 3037

#\*S A V Renown 3439

+Rito 707 of Ideal 3407 7075

+\*Coleman Glacier 041

\*S A V Blackcap May 4136

19866409 #\*Coleman Donna 439

#\*GDAR Game Day 449

+\*Coleman Donna 714

#\*S A V International 2020

#\*S A V Harvester 0338

+\*PVA Blackcap May 4397

#\*S A V Emblynette 5483

17884732 #\*S A V May 2397

#\*S A F 598 Bando 5175

S A V May 7238

CED	BW	WW	YW	SC	Milk	MB	RE	\$M	\$W
1+5	1+2.0	1+68	1+118	1+28	1+28	1-17	1+65	+65	+65

This sharp and attractive heifer produced in the embryo program is double-bred to the herd sire producing Blackcap May family and sired by Coleman Glacier 041 who sold one-quarter interest for \$270,000.

The donor dam sold one-half interest for \$50,000 for a \$100,000 valuation as the top-selling bred heifer of the 2015 Pasture View Sale, and she was later acquired in her entirety as the top-selling Lot 1 female of the record-setting Pasture View Dispersal in 2019, going on to be the featured Lot 1 top-valued cow of the 2022 ZWT Sale.

A maternal brother is featured as Lot 87 and a full brother is featured as Lot 140.

Three maternal sister post a collective progeny weaning ratio of 103.



SAV May 2397 –  
Pathfinder grandam  
of Lots 15, 87 and  
140.



PVA Blackcap May 4397  
– Dam of Lots 15, 15A, 87  
and 140.



PVA Blackcap May 4397 – Dam of Lots 15, 15A, 87 and 140.





**ZWT Blackcap May 2589 – Lot 17**



**ZWT Blackcap May 2600 – Lot 16**

## 16 ZWT BLACKCAP MAY 2600

Birth Date: 09-16-2022 Cow +\*20671367 Tattoo: 2600

#S AV 8180 Traveler 004 #Sitz Traveler 8180  
 #S A V Net Worth 4200 +Boyd Forever Lady 8003  
 14739204 +S A V May 2410 #+S A F 598 Bando 5175  
 #S A V May 6269  
 #+\*R B Active Duty 010 #\*LCC New Standard  
 +\*PVA Blackcap May F697 +\*B A Lady 6807 305  
 18747552 #+S A V May 2397 #+S A F 598 Bando 5175  
 S A V May 7238

CED	BW	WW	YW	SC	Milk	MB	RE	\$M	\$W
I+4	I+3.1	I+59	I+108	I+.84	I+28	I+.44	I+.58	+38	+50

A double-bred Blackcap May by the record-setting Genex Pathfinder Sire SAV Net Worth 4200.

The donor dam was selected as the \$65,000 top-selling female of the 2017 Pasture View Sale and went on to be the \$40,000 top-seller of the record-setting Pasture View Dispersal where she produced a \$13,000 daughter.

The dam has a progeny weaning ratio of 111 on her first natural calf, and she is a flush sister to a member of the Genex AI Stud.



**Siebring Blackcap May 473 – Grandam of Lot 17.**

## 17 ZWT BLACKCAP MAY 2589

Birth Date: 09-14-2022 Cow 20696366 Tattoo: 2589

#+\*LD Capitalist 316 #\*Connealy Capitalist 028  
 \*Musgrave 316 Colossal 137 LD Dixie Erica 2053  
 18774441 #\*Musgrave Lady Barbara 545 #\*Musgrave Big Sky  
 +\*S A V Supercharger 6813 Musgrave Lady Barbara 272  
 +\*ZWT Blackcap May 0261 #+\*S A V Recharge 3436  
 20129554 \*Siebring Blackcap May 473 S A V Madame Pride 0075  
 #\*S A V Final Answer 0035  
 +\*S A V Blackcap May 273

CED	BW	WW	YW	SC	Milk	MB	RE	\$M	\$W
\$+11	-1.4	+62	+102	-.01	+20	+92	+57	+79	+63
I+6	I+1.7	I+55	I+100	I+1.28	I+27	I+.41	I+.43	+43	+50

A very promising fall yearling heifer produced as a natural calf from ZWT Blackcap May 0261, who sold one-half interest for \$17,000 as one of the top-valued females of the 2022 ZWT Sale to Albrecht Ranch Angus of Oklahoma. The dam is the result of mating the \$235,000 Select Sires bull SAV Supercharger 6813 with Siebring Blackcap May 473, who sold one-half interest for \$300,000 to ZWT Ranch as the all-time record-selling Siebring female to top the 2018 Siebring Sale where she also produced the \$65,000 top-selling bred heifer. Owned with Albrecht/Penz.



**ZWT Blackcap May 0261 – Dam of Lot 17.**





SAV Blackcap May 1234 – Grandam of Lot 18.

## 18 ZWT BLACKCAP MAY 3351

Birth Date: 02-15-2023 Cow +20742923 Tattoo: 3351

#+\*Coleman Charlo 0256 #\*O C C Paxton 730P  
 +\*S A V Rainfall 6846 +Bohi Abigale 6014  
 18578963 \*S A V Blackcap May 4136  
 #+\*LD Capitalist 316 #\*Connealy Capitalist 028  
 +\*BRMF Blackcap May 1234-9127 LD Dixie Erica 2053  
 19706748 \*S A V Blackcap May 1234 #S A V Net Worth 4200  
 \*S A V Blackcap May 4136

CED	BW	WW	YW	SC	Milk	MB	RE	\$M	\$W
+8	+7	+65	+119	+1.15	+26	+1.37	+1.64	+68	+63

This extremely long-bodied and attractive heifer produced in the embryo program is by the \$460,000 proven sire SAV Rainfall 6846, tracing twice to the all-time world record income-producing cow SAV Blackcap May 4136.

The donor dam was selected by ZWT Ranch as the \$27,000 top-selling bred heifer of the Brumfield First Production Sale in 2021, and the grandam was selected by Voss Angus as the top-selling Lot 1 cow of the Scioto Valley Dispersal in 2022.



BRMF Blackcap May 1234-9127 – Dam of Lot 18.



ZWT Blackcap May 3351 – Lot 18

## 19 ZWT BLACKCAP MAY 2621

Birth Date: 09-22-2022 Cow \*20746303 Tattoo: 2621

\*ZWT Chaperone 4030 \*S A V Birthstone 8258  
 +\*ZWT Infusion F182 +SIEBRING Elba 247  
 19382109 \*E A Rose 918 #\*S A V Final Answer 0035  
 E A Rose 738  
 \*Buford Trademark B91 \*Buford AVF All Purpose 4700  
 ZWT Blackcap May 8307 +\*Bo Bo Madame Pride 9549  
 19626650 +ZWT Blackcap May 5167 #+MF Net Return 8197  
 #+\*S A V Blackcap May 7872

CED	BW	WW	YW	SC	Milk	MB	RE	\$M	\$W
+5	+1.5	+57	+98	N/A	+30	N/A	N/A	N/A	+56

A fall yearling heifer from the herd sire producing Blackcap May family sired by ZWT Infusion F182.

This promising prospect is from a dam by the ZWT sire Buford Trademark B91.

The grandam was produced in the ZWT embryo program tracing to SAV Blackcap May 7872, the Pathfinder Dam who sold as the top-selling fall cow/calf pair of the 2015 ZWT Sale.

## 20 ZWT BLACKCAP MAY 2063

Birth Date: 03-04-2022 Cow 20746302 Tattoo: 2063

\*Frey's Cowboy Logic #\*HA Cowboy Up 5405  
 \*Frey's Django 0147 \*F A R Princess 148Z  
 19824762 FAR Princess 7278 #\*Frey's Appearance  
 FAR Princess 226C  
 ZWT Transformer 6109 +\*Buford Transformer Y353  
 ZWT Blackcap May 0262 +ZWT Juanada 4062  
 20743243 ZWT Blackcap May 4000 #\*S A V Priority 7283  
 #+\*S A V Blackcap May 7872

CED	BW	WW	YW	SC	Milk	MB	RE	\$M	\$W
+6	+2.1	+65	+114	N/A	+24	N/A	N/A	N/A	+54

This bred heifer from the Blackcap May family is by the ZWT herd sire selected as the \$20,000 second top-selling bull of the 2021 Frey Sale in North Dakota.

The Pathfinder third dam is a full sister to the all-time world record income-producing cow SAV Blackcap May 4136.

**Bred AI to calve February 9, 2024 to DEER VALLEY BIG JON 022. Examined safe.**



*SAC Madame Pride 7804*

Lot 21



*Kato Roberts*

*Powerful and Impressive*



**21 S A C MADAME PRIDE 7804**

Birth Date: 02-12-2017 Cow +19066744 Tattoo: 7804

+Rito 707 of Ideal 3407 7075 #R R Rito 707  
 Ideal 3407 of 1418 076  
 #+\*S A V Renown 3439 #S A V 8180 Traveler 004  
 17633839 \*S A V Blackcap May 4136 #+S A V May 2397  
 #+S A V Bismarck 5682 #+\*G A R Grid Maker  
 #+\*S A V Madame Pride 9803 S A V Abigale 0451  
 16394717 \*S A V Madame Pride 5290 #S A V 8180 Traveler 004  
 S A V Madame Pride 0075

CED	BW	WW	YW	SC	Milk	MB	RE	\$M	\$W
-1	+2.9	+73	+124	+79	+24	-.01	+.77	+65	+64

Averaged 11 embryos on two conventional flushes.

The powerful and impressive ZWT foundation female from the Madame Pride family by the Genex Pathfinder Sire SAV Renown 3439, with a progeny weaning ratio of 102 on two natural calves. The dam is a seventh consecutive generation SAV donor while the grandam is the top income-producing daughter to date of the maternal matriarch SAV Madame Pride 0075 who is best known as the dam of the all-time world record-selling bull SAV America 8018.

**Bred to calve March 10, 2024 to SAV BLUEPRINT 2933.**  
**Examined safe.**

**21A ZWT MADAME PRIDE 3257**

Birth Date: 03-31-2023 Cow 20741546 Tattoo: 3257

\*ZWT Chaperone 4030 \*S A V Birthstone 8258  
 +\*ZWT Infusion F182 +SIEBRING Elba 247  
 19382109 \*E A Rose 918 #\*S A V Final Answer 0035  
 E A Rose 738  
 #+\*S A V Renown 3439 +Rito 707 of Ideal 3407 7075  
 #+\*S A C Madame Pride 7804 \*S A V Blackcap May 4136  
 19066744 +\*S A V Madame Pride 9803 #+S A V Bismarck 5682  
 \*S A V Madame Pride 5290

CED	BW	WW	YW	SC	Milk	MB	RE	\$M	\$W
1+3	1+2.2	1+67	1+115	1+80	1+27	1+27	1+80	+58	+63

This sharp and snappy late March heifer from the Madame Pride family is sired by ZWT Infusion F182 produced as a natural daughter of a powerful ZWT foundation female, backed by generations of top producers.

A maternal sister weaned her first calf with a ratio of 108.



**ZWT Madame Pride 3257 – Lot 21A**



**SAV Madame Pride 0075 – Third dam of Lots 21 through 23.**



**SAV Madame Pride 5290 – Grandam of Lots 21 through 23.**



**SAV Madame Pride 9803 – Dam of Lots 21 and 21A.**



*ZWT Madame Pride 3019*

Lot 22A



*Incredible Madame Pride*




**ZWT Madame Pride 2501 – Lot 22**

## 22 ZWT MADAME PRIDE 2501

Birth Date: 08-01-2022 Cow +\*20516043 Tattoo: 2501

#+\*S A V Renown 3439 +Rito 707 of Ideal 3407 7075  
 +\*Coleman Glacier 041 \*S A V Blackcap May 4136  
 19866409 #+\*Coleman Donna 439 #+GDAR Game Day 449  
 #+\*S A V 707 Rito 9969 +\*Coleman Donna 714  
 +\*S A V Madame Pride 2551 +Rito 707 of Ideal 3407 7075  
 17294203 \*S A V Madame Pride 5290 BR Polly 8077-472  
 S A V Madame Pride 0075

CED	BW	WW	YW	SC	Milk	MB	RE	\$M	\$W
I+2	I+2.4	I+68	I+121	I+68	I+25	I-.01	I+.61	+53	+59

A blending of the Madame Pride and Donna families by the \$270,000 Coleman Glacier 041.

The donor dam is a flush sister to the \$100,000 SAV Realist 2846. A maternal sister weaned her first calf with a ratio of 111.

## 22A ZWT MADAME PRIDE 3019

Birth Date: 01-18-2023 Cow +20747509 Tattoo: 3019

#\*Panther Cr Incredible 6704 Musgrave Invision  
 KR Mojo 8520 \*Panther Cr JH Blackbird 409  
 19219146 #KR Princess 6394 #\*Kramers Apollo 317  
 #KR Princess 4386  
 #+\*S A V 707 Rito 9969 +Rito 707 of Ideal 3407 7075  
 +\*S A V Madame Pride 2551 BR Polly 8077-472  
 17294203 \*S A V Madame Pride 5290 #S A V 8180 Traveler 004  
 S A V Madame Pride 0075

CED	BW	WW	YW	SC	Milk	MB	RE	\$M	\$W
I+4	I+2.8	I+69	I+126	I+.73	I+23	I+.26	I+.53	+45	+56

**SELLING ONE-HALF INTEREST WITH THE OPTION TO DOUBLE THE BID TO ACQUIRE FULL OWNERSHIP MINUS 10 RETAINED EMBRYOS AT THE SELLERS EXPENSE.**

This incredible Madame Pride heifer offers performance with size and scale in a stout yet feminine package from a tremendous donor dam stemming from a strong maternal heritage.

The dam is a flush sister to the \$100,000 SAV Realist 2846 and to the SAV and Mohnen donor SAV Madame Pride 2552, stemming from SAV Madame Pride 5290, the top income-producing daughter of the maternal matriarch SAV Madame Pride 0075.



## 22B ZWT MADAME PRIDE 3032

Birth Date: 01-23-2023 Cow +\*20731245 Tattoo: 3032

#\*Panther Cr Incredible 6704 Musgrave Invision  
 KR Mojo 8520 \*Panther Cr JH Blackbird 409  
 19219146 #KR Princess 6394 #\*Kramers Apollo 317  
 #KR Princess 4386  
 #+\*S A V 707 Rito 9969 +Rito 707 of Ideal 3407 7075  
 +\*S A V Madame Pride 2551 BR Polly 8077-472  
 17294203 \*S A V Madame Pride 5290 #S A V 8180 Traveler 004  
 S A V Madame Pride 0075

CED	BW	WW	YW	SC	Milk	MB	RE	\$M	\$W
I+4	I+2.8	I+69	I+126	I+.73	I+23	I+.26	I+.53	+45	+56

This attractive and well-designed Madame Pride heifer is from a successful embryo mating by the \$42,500 KR Mojo 8520 from an outstanding daughter of the \$147,500 Pathfinder Sire SAV 707 Rito 9969.

The high-income-producing grandam is a maternal sister to the \$1.51 million all-time world record-selling bull SAV America 8018.

A maternal sister weaned her first calf with a ratio of 111.

**ZWT Madame Pride 3032 – Lot 22B**

**SAV Madame Pride 2551 – Dam of Lots 22, 101, 102 and 142.**





Ingram Madame Pride 9226 – Lot 24

**24 INGRAM MADAME PRIDE 9226**  
 Birth Date: 08-30-2019 Cow #\*19638660 Tattoo: 9226

\*Dameron First Class EXG RS First Rate S903 R3  
 +\*GCC New Game 5654C Dameron Northern Miss 3114  
 18324437 +\*Duff NE 9375 Georgina 845 +\*Duff New Edition 6108  
 WK Georgina 9375  
 #+S A V Bismarck 5682 #+\*G A R Grid Maker  
**S A V Madame Pride 8283** S A V Abigale 0451  
 16056409 #S A V Madame Pride 1093 #+S A F 598 Bando 5175  
 S A V Madame Pride 8264

CED	BW	WW	YW	SC	Milk	MB	RE	\$M	\$W
+3	+2.1	+53	+88	1+04	+20	1+27	1+32	+40	+44

A young cow produced in the embryo program at Ingram Angus from a proven donor dam with a progeny weaning ratio of 101 on 11 natural calves with nine daughters in production and 18 head evaluated by ultrasound. The Pathfinder grandam is a full sister to SAV Madame Pride 0075.

**Bred to calve March 25, 2024 to BROOKING GOLD COIN 8069. Examined safe.**

**24 ZWT MADAME PRIDE 3034**  
 Birth Date: 01-23-2023 Cow #\*20689529 Tattoo: 3034

#+\*PVF Insight 0129 #\*S A V Brilliance 8077  
 +\*Lafins Marvel 1801 +\*PVF Missie 790  
 19091613 Lafins Galaxie 3332 +EXAR Consensus 1972B  
 Lafins Galaxie 1241  
 +\*GCC New Game 5654C \*Dameron First Class  
 +\*Ingram Madame Pride 9226 +\*Duff NE 9375 Georgina 845  
 19638660 S A V Madame Pride 8283 #+S A V Bismarck 5682  
 #S A V Madame Pride 1093

CED	BW	WW	YW	SC	Milk	MB	RE	\$M	\$W
+2	+3.4	+59	+102	N/A	+18	N/A	N/A	N/A	+40

A show heifer and brood cow prospect from the Madame Pride with femininity and depth combined with an excellent disposition.

This daughter of the ZWT featured sire Lafins Marvel 1801 stems from the Ingram foundation donor SAV Madame Pride 8283 and the Pathfinder Dam SAV Madame Pride 1093.



ZWT Madame Pride 3046 – Lot 23

**23 ZWT MADAME PRIDE 3046**  
 Birth Date: 01-30-2023 Cow #\*20689534 Tattoo: 3046

+\*Deer Valley Growth Fund #+\*Basin Payweight 1682  
 +\*WHITESTONE +\*Deer Valley Rita 36113  
 19000000 #B&B Erica 605 #+G A R Exaltation 3144  
 B&B Erica 4064  
 #+\*LD Capitalist 316 #\*Connealy Capitalist 028  
 +\*Mohnen Madame Pride 279 LD Dixie Erica 2053  
 19486379 \*S A V Madame Pride 5290 #S A V 8180 Traveler 004  
 S A V Madame Pride 0075

CED	BW	WW	YW	SC	Milk	MB	RE	\$M	\$W
+8	+1.4	+84	+147	1+70	+30	1+37	1+47	+59	+75

A daughter of the WHITESTONE top-seller that carries registration number 19000000 and has the distinction of being a maternal brother to Koupals B&B Identity. This stout-made brood cow prospect is a granddaughter of the proven sires Deer Valley Growth Fund and LD Capitalist 316, stemming from the high-income-producing cows SAV Madame Pride 5290 and SAV Madame Pride 0075.



ZWT Madame Pride 3034 – Lot 24A





**Reisig Intrigue 4407** – Full brother to Lot 25.

25	REISIG ELBA 5000 [OSF]
Birth Date: 02-22-2015	Cow +18279198
Tattoo: 5000	
#*Connealy Impression	#Connealy Reflection
#Connealy Imprint 8317	Pearl Pammy of Conanga 194
16204970 +Ellina of Conanga 868 7127	#+*G A R Grid Maker
	Eligence Plus of Conanga
#+S A V Bismarck 5682	#+*G A R Grid Maker
*Buford Elba 9000	S A V Abigale 0451
16452526 #+S A V Elba 4436	#S A V 8180 Traveler 004
	S A V Elba 1094

CED	BW	WW	YW	SC	Milk	MB	RE	\$M	\$W
+7	+2.5	+57	+93	+1.05	+10	+28	+27	+80	+44

Averaged 9 embryos on three IVF aspirations.

A full sister to the Genex sire Reisig Intrigue 4407 from the \$60,000 valued Buford Elba 9000, stemming from the Pathfinder Dam SAV Elba 4436 and SAV Elba 1094 who both generated in excess of \$1.5 million in progeny sales each.

A full sister to the dam of this cow produced the \$50,000 Genex sire Buford Pathfinder C304.

Produced an outstanding flush of spring bulls by KLA Respect 186.

**Sells with a bull calf at side (Lot 25A) calved October 2, 2023 by SQUARE B MAGA 8299.**



**Reisig Elba 5000** – Lot 25



**SAV Elba 1094** – Featuring her influence.



**SAV Elba 4436** – Pathfinder grandam of Lots 25, 27 and 28.



**Buford Elba 9000** – Dam of Lot 25.






**BM/RCA Elba 8061 316 – Lot 27**



**SAV Elba 5383 – Dam of Lot 29, grandam of Lot 30.**

	<b>BM/RCA ELBA 8061 316</b>			
	Birth Date: 08-16-2018		Cow +19478846	Tattoo: 8061
	#*Connealy Capitalist 028		#*S A V Final Answer 0035	
	#+*LD Capitalist 316		Prides Pita of Conanga 8821	
	17666102 LD Dixie Erica 2053		#C A Future Direction 5321	
			LD Dixie Erica Oar 0853	
	#+S A V Bismarck 5682		#+*G A R Grid Maker	
	#*MF Elba 5010		S A V Abigale 0451	
	18358217 #+S A V Elba 4436		#S A V 8180 Traveler 004	
		S A V Elba 1094		

CED	BW	WW	YW	SC	Milk	MB	RE	\$M	\$W
+10	+8	+60	+103	1+.25	+24	+56	+40	+68	+57

This impressive cow has a progeny weaning ratio of 103 on two calves and a progeny yearling ratio of 109 combined with progeny IMF and ribeye ratios of 131 and 102, respectively, on one head; and she is sired by the Beef 360 Pathfinder Sire LD Capitalist 316.

The donor dam is a full sister to the dams of the Genex sires Buford Pathfinder C304 and Reisig Intrigue 4407.

**Sells with a bull calf at side (Lot 27A) calved October 2, 2023 by KLA RESPECT 186.**



**ZWT Elba 2221 – Lot 26**

26 ZWT ELBA 2221			
Birth Date: 03-30-2022		Cow *20447270	Tattoo: 2221
#+*PVF Insight 0129		#*S A V Brilliance 8077	
*Lafins Marvel 1801		+*PVF Missie 790	
19091613	Lafins Galaxie 3332	+EXAR Consensus 19728	
		Lafins Galaxie 1241	
+*S A V Hesston 2217		#*S A V Harvester 0338	
+*ZWT Elba 5053		+S A V Emblynette 3301	
18383796	+SIEBRING Elba 247	#S A V Prosperity 9131	
		+S A V Elba 801	

CED	BW	WW	YW	SC	Milk	MB	RE	\$M	\$W
+4	+3.2	+67	+114	1+.59	+24	1+.31	1+.79	+64	+55

This special attraction bred heifer from the Elba family is sired by the popular champion Lafins Marvel 1801.

The dam is a second generation ZWT Elba donor from the mating of SAV Hesston 2217 with Siebring Elba 247.

**Bred AI to calve February 25, 2024 to SAV RIVERSIDE 2381. Examined safe.**



**Upchurch Elba 938 – Maternal sister to Lot 27.**



**29 ZWT ELBA 5352**

Birth Date: 03-31-2015 Cow +18205156 Tattoo: 5352

#R R Rito 707 Rito N Bar  
 +Rito 707 of Ideal 3407 7075 Eriskay of Rollin Rock 3  
 13066860 Ideal 3407 of 1418 076 Ideal 1418 of 8103 4286  
 Ideal 076 of 692 8375

#S A V 8180 Traveler 004

S A V Elba 5383 #Sitz Traveler 8180  
 15108227 S A V Elba 1094 +Boyd Forever Lady 8003  
 S A V Elba 7099 #S A F 598 Bando 5175

CED	BW	WW	YW	SC	Milk	MB	RE	\$M	\$W
+3	+1.5	+53	+89	+1.51	+24	+1.10	+26	+55	+50

A full sister to the ZWT and Buford sire SAV Right Way 3670 selected as the \$22,000 top-selling bull of his flush in the 2014 SAV Sale, where he was one of twelve maternal brothers who averaged \$18,542 and a flush sister sold for \$20,000. Maternal sister include the top-selling Lot 1 heifers of the 2014, 2015 and 2017 ZWT Sales.

**Bred to calve March 10, 2024 to BROOKING GOLD COIN 8069. Examined safe.**

**29A ZWT ELBA 3147**

Birth Date: 03-09-2023 Cow 20710308 Tattoo: 3147

#+\*PVF Insight 0129 #\*S A V Brilliance 8077  
 \*Lafins Marvel 1801 +\*PVF Missie 790  
 19091613 Lafins Galaxie 3332 +EXAR Consensus 1972B  
 Lafins Galaxie 1241

+Rito 707 of Ideal 3407 7075

+ZWT Elba 5352 #R R Rito 707  
 18205156 S A V Elba 5383 Ideal 3407 of 1418 076  
 S A V Elba 1094 #S A V 8180 Traveler 004

CED	BW	WW	YW	SC	Milk	MB	RE	\$M	\$W
+6	+1.6	+56	+98	N/A	+21	+1.10	+1.77	+63	+46

This deep-ribbed, broody heifer by Lafins Marvel 1801 was produced from a full sister to the \$22,000 SAV Right Way 3670. The grandam is the SAV and ZWT donor who lived to 18 years of age.

**ZWT Elba 3147 – Lot 29A****30 ZWT ELBA 1615**

Birth Date: 10-23-2021 Cow \*20449843 Tattoo: 1615

#\*S A V International 2020 #\*S A V Harvester 0338  
 +\*Brooking Major 7103 #\*S A V Emblynnette 5483  
 19148779 \*Soo Line Rose 1019 #\*Soo Line Motive 9016  
 \*E A Rose 918

+\*S A V Impact 5595

+\*ZWT Elba 7361 #\*S A V International 2020  
 18987239 S A V Elba 5383 +S A V Emblynnette 3301  
 S A V Elba 1094 #S A V 8180 Traveler 004

CED	BW	WW	YW	SC	Milk	MB	RE	\$M	\$W
+3	+1.9	+62	+102	N/A	+32	N/A	N/A	N/A	+61

This daughter of the \$80,000 Brooking Major 7103 was produced from a dam who is a maternal sister to multiple ZWT sale-toppers as well as important cows in the SAV program.

The incredible grandam lived to 18 years of age as one of the all-time top daughters of the legendary SAV Elba 1094.

**Bred AI to calve March 2, 2024 to SAV RIVERSIDE 2381. Examined safe.**

**ZWT Elba 5352 – Lot 29****SAV Right Way 3670 – Full Brother to Lot 29.**





**ZWT Elba 2711 – Lot 31**



**Siebring Elba 247 – Dam of Lot 31.**

31

ZWT ELBA 2711

Birth Date: 10-18-2022

Cow +\*20696519

Tattoo: 2711

#\*S A V Renown 3439

+Rito 707 of Ideal 3407 7075

+\*Coleman Glacier 041

\*S A V Blackcap May 4136

19866409 #+\*Coleman Donna 439

#+GDAR Game Day 449

+\*Coleman Donna 714

#S A V Prosperity 9131

#+S A V Providence 6922

+SIEBRING Elba 247

#S A V Emblynette 3123

17341001 +S A V Elba 801

#S A V Net Worth 4200

S A V Elba 1094

CED	BW	WW	YW	SC	Milk	MB	RE	\$M	\$W
I+3	I+3.5	I+75	I+127	I+37	I+34	I+03	I+.60	+70	+72

This fall heifer produced in the embryo program by the \$270,000 Coleman Glacier 041 is from the cherished ZWT foundation donor Siebring Elba 247 who records a progeny weaning ratio of 104 on three natural calves along with progeny IMF and ribeye ratios of 112 and 108, respectively, on five head with four daughters in production who post a collective progeny weaning ratio of 107. The dam is a maternal sister to the \$23,000 Semex sire SAV Radiance 0801.



**SAV Elba 801 – Grandam of Lot 31 and third dam of Lots 32 and 33.**



**S A V Elba 171 – Grandam of Lots 32 and 33 and maternal sister to the dam of Lot 31.**



**Siebring Elba 796 – Dam of Lot 33 and maternal sister to the dam of Lot 31.**





Siebring Elba 1921 – Lot 32

### 32 SIEBRING ELBA 1921

Birth Date: 02-01-2019 Cow 19492565 Tattoo: 1921

#+\*Coleman Charlo 0256  
#\*S A V Raindance 6848  
18578965 \*S A V Blackcap May 4136

#\*O C C Paxton 730P  
+Bohi Abigale 6014  
#S A V 8180 Traveler 004  
#+S A V May 2397

#+\*S A V Renown 3439

+Siebring Elba 705  
18832500 +S A V Elba 171

+Rito 707 of Ideal 3407 7075  
\*S A V Blackcap May 4136  
#+S A V Bismarck 5682  
+S A V Elba 801

CED	BW	WW	YW	SC	Milk	MB	RE	\$M	\$W
+5	+2.6	+73	+131	N/A	+28	+1.06	+1.66	+49	+59

Backed by the maternal brothers SAV Raindance 6848 and SAV Renown 3439, this cow balances a progeny birth ratio of 99 with a progeny weaning ratio of 113 on her first calf after recording an individual weaning ratio of 112, from a dam with a progeny weaning ratio of 104 on three calves.

The grandam is the \$75,000 SAV Elba 171.

**Sells with a heifer calf at side (Lot 32A) calved September 7, 2023 by SAV BLOODLINE 9578.**



ZWT Elba 2565 – Lot 34

### 34 ZWT ELBA 2565

Birth Date: 09-09-2022 Cow +\*20671369 Tattoo: 2565

#S A V 8180 Traveler 004  
#S A V Net Worth 4200  
14739204 +S A V May 2410

#\*S A V Heritage 6295

+S A V Elba 918  
16393111 S A V Elba 1094

#Sitz Traveler 8180  
+Boyd Forever Lady 8003  
#+S A F 598 Bando 5175  
#S A V May 6269  
#CAR Duke 104  
\*S A V Blackcap May 4136  
#+S A F 598 Bando 5175  
S A V Elba 7099

CED	BW	WW	YW	SC	Milk	MB	RE	\$M	\$W
+1.3	+3.6	+53	+98	+1.65	+31	+1.32	+1.38	+42	+45

A proven pedigree heifer produced in the embryo program from the Elba family by the records setting Genex Pathfinder Sire SAV Net Worth 4200.

The successful donor dam is a direct daughter of the legendary SAV Elba 1094, who generated more than \$1.5 million in progeny sales.



ZWT Elba 3206 – Lot 33

### 33 ZWT ELBA 3206

Birth Date: 03-16-2023 Cow \*20710333 Tattoo: 3206

\*Sitz Invasion 574D  
#SITZ Commerce 670F  
19078171 #\*Sitz Pride 101D

#+\*S A V Resource 1441

+\*Siebring Elba 796  
18847912 +S A V Elba 171

#\*Connealy Conquest  
#Sitz Supermama 173Z  
#\*Mohnen Substantial 272  
Sitz Pride 49B  
+Rito 707 of Ideal 3407 7075  
\*S A V Blackcap May 4136  
#+S A V Bismarck 5682  
+S A V Elba 801

CED	BW	WW	YW	SC	Milk	MB	RE	\$M	\$W
+6	+1.7	+72	+127	+1.41	+22	+1.36	+1.55	+59	+59

This daughter of the Vermillion Ranch sire Sitz Commerce 670F was produced from the ZWT foundation donor who sold one-half interest for \$20,000 to Bear Mountain and John Brown as one of the top-selling females of the 2021 ZWT Sale.

The grandam was selected by ZWT Ranch as the \$75,000 top-selling Lot 1 cow of the 2016 Siebring Sale.

A maternal sister was selected by Albrecht Ranch Angus as a \$10,500 pregnancy from the 2022 ZWT Sale.

Owned with Bear Mountain and John Brown.



Siebring Elba 234 – Grandam of Lot 35.

### 35 ZWT ELBA 2323

Birth Date: 04-19-2022 Cow \*20464777 Tattoo: 2323

+\*S A V Impact 5595  
+\*ZWT Intervention 7363  
18987241 \*E A Rose 918

+\*S A V Right Way 3670

+\*ZWT Elba 7367  
18905661 +SIEBRING Elba 234

#\*S A V International 2020  
+S A V Emblynette 3301  
#\*S A V Final Answer 0035  
E A Rose 738

+Rito 707 of Ideal 3407 7075

S A V Elba 5383  
#+\*S A V 707 Rito 9969  
S A V Elba 1094

CED	BW	WW	YW	SC	Milk	MB	RE	\$M	\$W
+6	+1.1	+58	+96	N/A	+29	N/A	N/A	+55	+58

This bred heifer is by the \$42,500 ZWT Intervention 7363 from a double Elba produced in the embryo program.

The grandam is the \$40,000 ZWT foundation donor Siebring Elba 234 whose many successful progeny include ZWT Elba 5069, the \$41,000 top-selling Lot 2 heifer of the 2015 ZWT Sale.

**Bred AI to calve March 4, 2024 to SAV RIVERSIDE 2381. Examined safe.**



SAV Elba 918 – Dam of Lot 34.





**ZWT Everelda Entense 3061 – Lot 37A**

**37A ZWT EVERELDA ENTENSE 3061**  
Birth Date: 02-14-2023 Cow +\*20705747 Tattoo: 3061

**37B ZWT EVERELDA ENTENSE 3093**  
Birth Date: 02-21-2023 Cow +\*20705750 Tattoo: 3093

\*S A V Renew 8132  
KLA Respect 186  
20047598 +KLA Forever Lady 7190  
+\*Deer Valley Growth Fund  
\*Shady Brook Everelda 9523  
19731957 \*Shady Brook Everelda 7506

\*S A V Renown 3439  
+\*S A V Blackcap May 4593  
+\*S A V Net Worth 4200  
\*Kla Forever Lady 125  
+\*Basin Payweight 1682  
+\*Deer Valley Rita 36113  
+\*Coleman Charlo 0256  
+\*Shady Brook Everelda 5511

CED	BW	WW	YW	SC	Milk	MB	RE	\$M	\$W
-1	+4.4	+91	+158	+1.41	+34	+55	+80	+71	+80

These stout and powerfully-constructed heifers are from the first calf crop by the ZWT sire KLA Respect 186 selected as the \$120,000 record-selling Lot 1 bull of the 2022 Albrecht/Penz Sale, produced from and up-and-coming donor in the ZWT program by the popular Deer Valley Growth Fund who leads the breed for annual registrations.

**38 ZWT LADY 3086**  
Birth Date: 02-17-2023 Cow +20705763 Tattoo: 3086

\*S A V Renew 8132  
KLA Respect 186  
20047598 +KLA Forever Lady 7190  
+\*LCC New Standard  
+\*R B Lady Standard 305-02  
16728855 +\*B A Lady 6807 305

\*S A V Renown 3439  
+\*S A V Blackcap May 4593  
+\*S A V Net Worth 4200  
\*Kla Forever Lady 125  
+\*Bon View New Design 1407  
LCC Sunset K3118  
+\*Vermilion Dateline 7078  
+G D Lady Hi Flyer 302

CED	BW	WW	YW	SC	Milk	MB	RE	\$M	\$W
-1	+3.2	+80	+131	+93	+27	+73	+83	+59	+71

A powerful, deep-ribbed and square-hipped heifer from the first calf crop by the \$120,000 record-selling Lot 1 bull of the 2022 Albrecht/Penz Sale where he recorded both the heaviest 205-day and 365-day weights.

The \$120,000 valued dam records a progeny birth ratio of 95 combined with a progeny weaning ratio of 112 on three natural calves along with progeny IMF and ribeye ratios of 102 and 101, respectively, on 38 head with 28 daughters in production. Many maternal siblings have highlighted sales.



**ZWT Lady 3086 – Lot 38**



**ZWT Ever Entense 3196 – Lot 36**

**36 ZWT EVER ENTENSE 3196**  
Birth Date: 03-13-2023 Cow \*20710328 Tattoo: 3196

#+\*PVF Insight 0129  
\*Lafins Marvel 1801  
19091613 Lafins Galaxie 3332  
+\*S A V Resource 1441  
+\*CampTown Ever Entense C17  
18531366 +\*Camptown Ever Entense Z01

\*S A V Brilliance 8077  
+\*PVF Missie 790  
+EXAR Consensus 1972B  
Lafins Galaxie 1241  
+Rito 707 of Ideal 3407 7075  
+\*S A V Blackcap May 4136  
+\*Soo Line Motive 9016  
+\*Limestone Ever Entense W578

CED	BW	WW	YW	SC	Milk	MB	RE	\$M	\$W
+5	+1.7	+56	+105	+1.59	+16	+03	+1.02	+62	+41

A very-attractive, sharp-fronted show heifer prospect sired by Lafins Marvel 1801 who reigned as Grand Champion Bull of the 2019 Iowa, Nebraska and Kansas State Fairs as well as a First Prize winner of 2020 National Western. This heifer stems from a past world record-selling cow.




**DBL Lady Upshot 723 – Lot 39**

### 39 DBL LADY UPSHOT 723

Birth Date: 01-27-2017 Cow +\*19050509 Tattoo: 723

\*S A V Revere 1180 #\*S A V 707 Rito 9969

+\*S A V Revolution 4846 #A C Duke Girl 57

17923418 \*S A V Blackcap May 4136 #S A V 8180 Traveler 004

#\*EXAR Upshot 0562B #\*S A V May 2397

+\*RB Lady Upshot 02-350 #\*Sitz Upward 307R

17559136 +\*R B Lady Standard 305-02 #\*EXAR Barbara T020

+\*B A Lady 6807 305 #\*LCC New Standard

+\*B A Lady 6807 305

CED	BW	WW	YW	SC	Milk	MB	RE	\$M	\$W
+0	+2.6	+69	+120	+84	+17	+84	+81	+44	+54

This daughter of the \$100,000 SAV Revolution 4846 is a maternal sister to the \$50,000 DBL Worldwide 0010 from a donor dam who records progeny IMF and ribeye ratios of 107 and 103, respectively, on 42 head with 52 daughters in production who post a collective progeny weaning ratio of 102.

The grandam is the \$120,000 valued ZWT foundation donor RB Lady Standard 305-02.

**Will sell with a calf at side (Lot 39A) by KLA RESPECT 186.**


**RB Lady Standard 305-02 – Dam of Lot 38, grandam of Lot 39 and full sister to the grandam of Lot 40.**

**Westwind Lady Prideva B17 – Lot 40**

### 40 WESTWIND LADY PRIDEVA B17

Birth Date: 02-28-2017 Cow +\*18836279 Tattoo: B17

#\*Basin Payweight 0065 #Vermilion Payweight J847

+\*Basin Payweight 1682 +Basin Lucy 3829

17038724 21AR O Lass 7017 #HARB Pendleton 765 J H

#G A R Objective 7125 21AR O Lass F24A

+\*RB Lady 7125-890-2170 #\*S S Objective T510 OT26

17285923 \*R B Lady Standard 305-890 +G A R 1407 New Design 1463

+\*B A Lady 6807 305 #\*LCC New Standard

+\*B A Lady 6807 305

CED	BW	WW	YW	SC	Milk	MB	RE	\$M	\$W
+3	+3.5	+78	+136	+45	+33	+93	+60	+61	+74

Averaged 9 embryos on three conventional flushes.

This massive ZWT foundation donor is a granddaughter of the \$170,000 RB Lady Standard 305-890. The donor dam has a progeny birth ratio of 93 combined with a progeny weaning ratio of 121 on one natural calf along with a progeny ribeye ratio of 104 on eight head and thirteen daughters in production who post a collective progeny weaning ratio of 104, and she is a full sister to an \$80,000 Ingram donor and to the ORlgen sire RB Rylie 890-2181.

**Sells open and ready to flush.**


**RB Lady Standard 305-890 – Grandam of Lot 40.**



*ZWT Highland Barbara 3130*  
Lot 41



*Highlight Heifer*



**41 ZWT HIGHLAND BARBARA 3130**

Birth Date: 03-06-2023 Cow +\*20697382 Tattoo: 3130

\*Bar R Jet Black 5063

\*Connealy Black Granite

\*LAR Man In Black

Bar R Iris Anita 0113

19955191 #JMB Maxine TG 2131

#Sitz Top Game 561X

#JMB Maxine Deluxe 9034

#+\*Basin Payweight 1682

#+\*Basin Payweight 006S

Highland Barbara 245 BAF

21AR O Lass 7017

18311017 #Highland Barbara 1133 Baf

K New Impression 181

+Highland Barbara 869 Baf

CED	BW	WW	YW	SC	Milk	MB	RE	\$M	\$W
I+6	+2.8	+87	+149	I+1.11	+24	I+.82	I+.61	+62	+69

The first of two very attractive heifers with outstanding number profiles ideally suited for the P&G Showring.

This elite ranking female is by the popular ABS Global sire LAR Man In Black from a tremendous donor dam who records a progeny weaning ratio of 105 on her first natural calf. The grandam is a Pathfinder Dam.

**41A ZWT HIGHLAND BARBARA 3224**

Birth Date: 03-20-2023 Cow +\*20697392 Tattoo: 3224

\*Bar R Jet Black 5063

\*Connealy Black Granite

\*LAR Man In Black

Bar R Iris Anita 0113

19955191 #JMB Maxine TG 2131

#Sitz Top Game 561X

#JMB Maxine Deluxe 9034

#+\*Basin Payweight 1682

#+\*Basin Payweight 006S

Highland Barbara 245 BAF

21AR O Lass 7017

18311017 #Highland Barbara 1133 Baf

K New Impression 181

+Highland Barbara 869 Baf

CED	BW	WW	YW	SC	Milk	MB	RE	\$M	\$W
I+6	+3.9	+88	+153	I+1.11	+24	I+.82	I+.61	+62	+65

This elite P&G show heifer prospect with an outstanding numerical profile is from a very successful embryo flush by the popular ABS Global sire LAR Man In Black from an outstanding donor by the ABS Global Pathfinder Sire Basin Payweight 1682.

The donor dam has a progeny weaning ratio of 105 on her first natural calf.

The grandam is a Pathfinder Dam.

A maternal sister was selected by Bucksnot RR Ranch as a feature of the 2022 ZWT Sale.



Highland Barbara 245 BAF – Dam of Lot 41 and 41A.



ZWT Blackcap 3119 – Lot 42

**42 ZWT BLACKCAP 3119 [MIF]**

Birth Date: 03-01-2023 Cow \*20689563 Tattoo: 3119

#\*S A V International 2020

#\*S A V Harvester 0338

+\*Brooking Major 7103

#+\*S A V Emblynette 5483

19148779 \*Soo Line Rose 1019

#\*Soo Line Motive 9016

\*E A Rose 918

+\*S A V First Prize 3642

\*S A V First Class 0207

ZWT Lady Blackcap 8209

+S A V Emblynette 3301

19298001 ZWT Lady Blackcap 3093

\*Sinclair Picasso

+ZWT Blackcap 0184

CED	BW	WW	YW	SC	Milk	MB	RE	\$M	\$W
+2	+2.4	+55	+89	N/A	+30	N/A	N/A	+83	+54

A stout-hipped, deep-bodied heifer with extra length sired by the \$80,000 Brooking Major 7103.

The dam is by the ZWT sire SAV First Prize 3642, tracing to the successful ZWT foundation donor OCC Blackcap 753L.

The grandam is by the ZWT sire Sinclair Picasso who topped a past Sinclair sale.



OCC Blackcap 753L – Fourth dam of Lot 42



ZWT Blackbird 3064 – Lot 43

**43 ZWT BLACKBIRD 3064**

Birth Date: 02-14-2023 Cow 20689542 Tattoo: 3064

\*ZWT Chaperone 4030

\*S A V Birthstone 8258

+\*ZWT Infusion F182

+SIEBRING Elba 247

19382109 \*E A Rose 918

#\*S A V Final Answer 0035

E A Rose 738

+\*S A V Right Way 3670

+Rito 707 of Ideal 3407 7075

ZWT Blackbird D176

S A V Elba 5383

18783247 +ZWT Blackbird 8211

#BC 7022 Raven 7965

+\*O C C Juanada 768J

CED	BW	WW	YW	SC	Milk	MB	RE	\$M	\$W
+3	+2.3	+55	+91	I+.42	+25	I+.40	I+.56	+47	+51

A powerful and extra-stout heifer with tremendous brood cow potential descending from the famous ZWT foundation donor OCC Juanada 768J.

This daughter of ZWT Infusion F182 is from a dam by SAV Right Way 3670 with a progeny weaning ratio of 106 on her first calf.

The sire is the top-selling Lot 1 bull of the 2019 ZWT Sale.



OCC Juanada 768J – Third dam of Lot 43.



*Bear Mtn Judy 2800*  
Lot 44



*Genetic Gem*





**Bear Mtn Judy 6535** – *Dam of Lot 44.*

#### 44 BEAR MTN JUDY 2800

Birth Date: 07-17-2022 Cow \*20457848 Tattoo: 2800

#Sitz Rainmaker 11127  
**21AR Rainmaker 8343A**  
 19235503 #21AR Eldorene 2025A

#\*KG Justified 3023  
**\*Bear Mtn Judy 6535**  
 18583302 Bear Mtn Judy 3092

Sitz Rainmaker 8075  
 Sitz Emma E 417L  
 #Connealy Packer 547  
 #21AR Eldorene 0113A  
 Connealy Judgment  
 KG Miss Magic 1443  
 #S A V Pioneer 7301  
 Bear Mtn Judy 0133

CED	BW	WW	YW	SC	Milk	MB	RE	\$M	\$W
+12	-6	+72	+131	+1.34	+31	+98	+46	+81	+77

A genetic gem loaded with calving ease, maternal and balance performance, sired by the GDAR and Baldrige sire 21AR Rainmaker 8343A, produced as a natural calf from the cow selected by ZWT as the \$49,000 record-selling Lot 1 cow of the 2022 Bear Mountain Female Sale, with a progeny weaning ratio of 109 on her first three natural calves and a progeny IMF ratio of 108 on 15 head.

This heifer is a maternal sister to Bear Mtn Pilot 1520, the \$40,000 top-selling Lot 1 bull of the 2022 Bear Mountain Sale to the Sitz and Ellingson programs, and her dam is a full sister to the ST Genetics sire Bear Mtn Justify.



**Bear Mtn Pilot 1520**  
 – *Maternal brother to Lot 44.*



**Bear Mtn Justify**  
 – *Full brother to the dam of Lot 44.*



**ZWT Kinochtry Beauty 2566** – *Lot 45*

#### 45 ZWT KINOCHTRY BEAUTY 2566

Birth Date: 09-09-2022 Cow \*20697393 Tattoo: 2566

\*Sitz Stellar 726D  
**\*Sitz Barricade 632F**  
 19078148 +\*SITZ Barabamere Nell 765D

#\*Sinclair Emulation XXP  
**+\*ZWT Kinochtry Beauty F103**  
 19430778 N Bar Kinochtry Beauty J2311

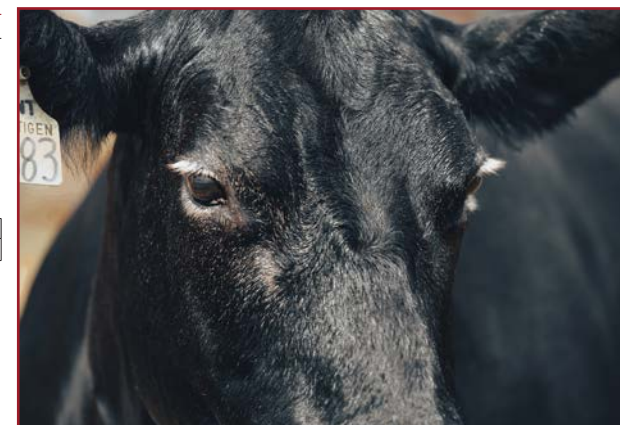
#\*Mohnen Substantial 272  
 \*SITZ Pride 200B  
 \*Sitz Superior 10971  
 Sitz Barabamere Nell 73T  
 #\*N Bar Emulation EXT  
 #N Bar Primrose Y3051  
 #\*N Bar Emulation EXT  
 N Bar Heiress A1389

CED	BW	WW	YW	SC	Milk	MB	RE	\$M	\$W
-1	+3.0	+61	+109	N/A	+19	+55	+33	+63	+43

A powerfully-deep and massive fall yearling heifer by the popular ABS Global sire Sitz Barricade 632F.

The dam of this heifer is a product of the embryo program, and she is a maternal sister to two consecutive top-selling bulls at ZWT Ranch.

The grandam was produced in the historic N Bar herd, and she is the result of a sire/daughter mating by N Bar Emulation Ext, the most widely-used sire in the history of the Angus breed.







**ZWT Georgina 2705 – Lot 46**



**WK Georgina 9375 – Featuring her influence.**



**ZWT Georgina 2718 – Daughter of WK Georgina 9375.**

## 46 ZWT GEORGINA 2705

Birth Date: 10-17-2022 Cow 20671371 Tattoo: 2705

+\*S A V Elation 7899 #+\*Sinclair Emulation XXP  
 +S A V Engage 0859 +\*S A V Blackcap May 1782  
 19853780 #+\*S A V Blackcap May 1808 #S A V Net Worth 4200  
 #+\*S A V May 2397  
 +\*Reiss Rito 7075 634 +Rito 707 of Ideal 3407 7075  
 \*ZWT Georgina 9500 \*Buford Elba 9000  
 19893289 +\*ZWT Georgina 7206 +\*ZWT Brigade 3665  
 +\*ZWT Georgina 3124

CED	BW	WW	YW	SC	Milk	MB	RE	\$M	\$W
-2	+4.8	+73	+124	N/A	+21	N/A	N/A	+64	+49

This powerful fall yearling heifer earned an outstanding individual weaning ratio of 111 from the first calf crop by the \$54,000 ZWT featured herd sire SAV Engage 0859. This heifer stems from the famous ZWT foundation donor WK Georgina 9375.

## 47 ZWT GEORGINA 1639

Birth Date: 11-03-2021 Cow 20340205 Tattoo: 1639

\*Brooking Bank Note 4040 #+\*Connealy Earnan 076E  
 +\*Brooking Gold Coin 8069 \*E A Rose 918  
 19377658 S A V Emblynette 4223 #\*S A V Harvester 0338  
 +S A V Emblynette 1786  
 +\*S A V Hesston 2217 #\*S A V Harvester 0338  
 ZWT Georgina 5290 +S A V Emblynette 3301  
 18205137 +\*ZWT Georgina 2192 +\*Duff Stimulus 856  
 WK Georgina 9375

CED	BW	WW	YW	SC	Milk	MB	RE	\$M	\$W
+5	+1.8	+58	+99	N/A	+18	+37	+29	+69	+45

A bred heifer by the ZWT featured sire Brooking Gold Coin 8069 from the Georgina family descending from the famous WK Georgina 9375.

This heifer is double-bred to the Pathfinder Sire SAV Harvester 0338.

**Bred to calve November 29, 2023 to DEER VALLEY BIG JON 022. Examined safe.**

## 48 ZWT GEORGINA 0283

Birth Date: 05-23-2020 Cow \*20118071 Tattoo: 0283

+\*S A V Impact 5595 #\*S A V International 2020  
 +\*ZWT Intervention 7363 +S A V Emblynette 3301  
 18987241 \*E A Rose 918 #\*S A V Final Answer 0035  
 E A Rose 738  
 #+\*S A V Resource 1441 +Rito 707 of Ideal 3407 7075  
 +\*ZWT Georgina 7205 \*S A V Blackcap May 4136  
 18884640 WK Georgina 9375 #\*N Bar Emulation EXT  
 B L R Georgina 7065

CED	BW	WW	YW	SC	Milk	MB	RE	\$M	\$W
+6	+1.6	+53	+94	N/A	+23	N/A	N/A	+56	+46

A granddaughter of the famous ZWT foundation donor WK Georgina 9375 who has produced a multitude of sale features including ZWT Georgina 2718, the \$55,000 top-selling female of the 2014 ZWT Sale.

This female is by the \$42,500 ZWT Intervention 7363 from a dam by the Pathfinder Sire SAV Resource 1441.

**Sells with a bull calf at side (Lot 48A) calved September 25, 2023 by BROOKING GOLD COIN 8069.**





ZWT Georgina 2077 – Lot 49

# 49 ZWT GEORGINA 2077

Birth Date: 03-08-2022	Cow *20447250	Tattoo: 2077
*Connealy Mainstay	*Connealy Glory 4127	
Musgrave Mainstay 2059	Jayce of Conanga 318E	
19827655 SA Edwina Erica 567-313	**Musgrave Aviator	
	BDM Edwina Erica 313	
#*EF Commando 1366	*EF Complement 8088	
ZWT Georgina 8063	Riverbend Young Lucy W1470	
19309034 ZWT Georgina 5841	+*S A V Right Way 3670	
	+ZWT Georgina 2279	

CED	BW	WW	YW	SC	Milk	MB	RE	\$M	\$W
+7	+1.7	+62	+107	N/A	+23	N/A	N/A	+80	+53

This attractive bred heifer from the Georgina family is from the first calf crop by the ZWT herd sire Musgrave Mainstay 2059. The dam is backed by EF Commando 1366 and SAV Right Way 3670, and the third dam is a flush sister to the grandam of Lot 50.

**Bred to calve February 7, 2024 to DEER VALLEY BIG JON 022. Examined safe.**



ZWT Pride 2586 – Lot 51

# 50 ZWT GEORGINA 2039

Birth Date: 02-23-2022	Cow 20447239	Tattoo: 2039
#*S A V Resource 1441	+Rito 707 of Ideal 3407 7075	
+*S A V Real Pride 4475	*S A V Blackcap May 4136	
17923531 S A V Madame Pride 0075	#+S A F 598 Bando 5175	
	S A V Madame Pride 8264	
+*S A V Stallion 2413	#S A V Mustang 9134	
ZWT Georgina 4173	*S A V Madame Pride 5290	
17911918 +ZWT Georgina 2278	HF Kodiak 5R	
	WK Georgina 9375	

CED	BW	WW	YW	SC	Milk	MB	RE	\$M	\$W
+3	+3.1	+60	+104	N/A	+21	N/A	N/A	+63	+45

A blending of famous families backed by two generations of ZWT herd sires from the Madame Pride family. This bred heifer records an individual weaning ratio of 105 and stems from WK Georgina 9375.

**Bred to calve February 8, 2024 to MUSGRAVE 316 COLOSSAL 137. Examined safe.**



ZWT Georgina 2039 – Lot 50

# 51 ZWT PRIDE 2586

Birth Date: 09-13-2022	Cow *20671368	Tattoo: 2586
+*Deer Valley Growth Fund	**Basin Payweight 1682	
*Deer Valley Big Jon 022	+*Deer Valley Rita 36113	
19738682 Stika Erica 0743	*JMB Traction 292	
	Stucky Erica 0310	
+*ZWT Summitt 6507	#+*S A V Renown 3439	
ZWT Pride 0564	+*Coleman Donna 714	
20364041 ZWT	+*ZWT Rawhide 2735	
	ZWT Pride 6457	

CED	BW	WW	YW	SC	Milk	MB	RE	\$M	\$W
+13	+2	+65	+119	N/A	+27	N/A	N/A	+67	+58

An outstanding fall heifer from the first calf crop by the ZWT herd sire Deer Valley Big Jon 022. This female has an individual birth ratio of 97 and an individual weaning ratio of 102 as the first calf from a dam by the ST Genetics sire ZWT Summitt 6507.





**ZWT Enchantress 2547 – Lot 53**

**53 ZWT ENCHANTRESS 2547** [M1F]  
 Birth Date: 09-07-2022 Cow \*20671364 Tattoo: 2547  
 #\*Plattmire Weigh Up K360 #\*Sitz Upward 307R  
**J&J Weigh Up 294** #Barbara of Plattmire 337  
 18004546 J & J Miss Georgina 294 #TC Romeo 917  
 #J Miss Georgina 927  
 \*Reisig Safe Guard 728 +\*Buford Osage A932  
 +\*Reisig Elba 3000  
**\*ZWT Enchantress 0546** +\*S A V First Prize 3642  
 20364037 ZWT Enchantress 8216 ZWT Enchantress 3133

CED	BW	WW	YW	SC	Milk	MB	RE	\$M	\$W
+8	+5	+73	+125	N/A	+27	N/A	N/A	+67	+66

A fall heifer with an individual birth ratio of 99 combined with an individual weaning ratio of 112 by the ZWT featured sire J&J Weigh Up 294.

This heifer was produced as the first calf from a two-year-old dam.



**SAV Madame Pride 2551 – Dam of Lot 55.**

**52 ZWT PRIMROSE 2623**  
 Birth Date: 09-22-2022 Cow \*20671363 Tattoo: 2623  
 #\*PVF Insight 0129 #\*S A V Brilliance 8077  
**\*Lafins Marvel 1801** +\*PVF Missie 790  
 19091613 Lafins Galaxie 3332 +EXAR Consensus 1972B  
 Lafins Galaxie 1241  
 #\*S A V Raindance 6848 #\*Coleman Charlo 0256  
**+\*SRR Primrose 8224** \*S A V Blackcap May 4136  
 19263934 \*LD Primrose 1925 #\*O C C Paxton 730P  
 #\*LD Primrose 9125

CED	BW	WW	YW	SC	Milk	MB	RE	\$M	\$W
+6	+2.3	+53	+97	N/A	+18	+1.1	+1.93	+64	+38

An impressive fall heifer from the Primrose family descending from N Bar Primrose 2424.

This female is by the popular champion Lafins Marvel 1801, from a dam by the \$450,000 ST Genetics Pathfinder Sire SAV Raindance 6848.



**ZWT Primrose 2623 – Lot 52**

**54 ZWT BLUE RIBBON HEIRESS 2692**  
 Birth Date: 10-11-2022 Cow 20671365 Tattoo: 2692  
 #\*PVF Insight 0129 #\*S A V Brilliance 8077  
**\*Lafins Marvel 1801** +\*PVF Missie 790  
 19091613 Lafins Galaxie 3332 +EXAR Consensus 1972B  
 Lafins Galaxie 1241  
 #\*S A V International 2020  
 #\*S A V Blackcap May 5530  
 \*S A V Momentum 9274  
 ZWT Blue Ribbon Heiress 3100

CED	BW	WW	YW	SC	Milk	MB	RE	\$M	\$W
+2	+3.1	+61	+104	N/A	+22	N/A	N/A	+78	+47

A solid heifer with an individual weaning ratio of 105 by the popular champion and ZWT featured sire Lafins Marvel 1801.

The dam is backed by the ZWT proven sires SAV Ignition 5629 and SAV Momentum 9274.



**ZWT Blue Ribbon Heiress 2692 – Lot 54**

**55 ZWT MADAME PRIDE 2553**  
 Birth Date: 09-07-2022 Cow Reg.No.Pdg. Tattoo: 2553  
 #\*PVF Insight 0129 #\*S A V Brilliance 8077  
**\*Lafins Marvel 1801** +\*PVF Missie 790  
 19091613 Lafins Galaxie 3332 +EXAR Consensus 1972B  
 Lafins Galaxie 1241  
 #\*S A V 707 Rito 9969 +Rito 707 of Ideal 3407 7075  
**+\*S A V Madame Pride 2551** BR Polly 8077-472  
 17294203 \*S A V Madame Pride 5290 #S A V 8180 Traveler 004  
 S A V Madame Pride 0075

CED	BW	WW	YW	SC	Milk	MB	RE	\$M	\$W
+6	+2.2	+60	+109	+44	+17	+0.9	+1.28	+69	+46
-2	+4.1	+59	+109	+1.28	+19	+2.9	+4.8	+19	+37

A special fall yearling heifer sired by the popular champion Lafins Marvel 1801 who reigned as Grand Champion of multiple state fairs.

The donor dam also produced Lots 22, 22A, 22B, 101, 102 and 142.

A maternal sister weaned her first calf with a ratio of 111.



**ZWT Madame Pride 2553 – Lot 55**



56 **ZWT BLACKBIRD 2140**

CED	BW	WW	YW	SC	Milk	MB	RE	\$M	\$W
l+1	l+2.7	l+67	l+124	l+.80	l+23	l+.51	l+.67	+49	+55

A black and white photograph of a black cow standing in a grassy field. The cow is facing right, and its shadow is cast on the grass. A fence and trees are visible in the background.

A black cow stands in profile in a grassy field. In the background, there is a red metal fence and a hilly landscape under a clear sky.

**57 ZWT RITA 2023**

CED	BW	WW	YW	SC	Milk	MB	RE	\$M	\$W
+0	+4.0	+74	+125	+1.21	+27	+89	+77	+65	+60

45





ZWT Queen Mother 2214 – Lot 59



PR 579 205-529 – Grandam of Lot 58.

### 58 ZWT ERNESTINE 1631

Birth Date: 10-30-2021 Cow \*20372001 Tattoo: 1631

#+\*S A V Resource 1441  
 +\*S A V Real Pride 4475  
 17923531 S A V Madame Pride 0075  
 #\*S A V Harvester 0338  
 +\*ZWT Ernestine 5383  
 18205166 \*P R 579 205-529  
 +Rito 707 of Ideal 3407 7075  
 \*S A V Blackcap May 4136  
 #+S A F 598 Bando 5175  
 S A V Madame Pride 8264  
 #\*S A V Heritage 6295  
 +\*S A V Emblynette 7749  
 #B A R Ext Traveler 205  
 P R Mona Lisa 529

CED	BW	WW	YW	SC	Milk	MB	RE	\$M	\$W
+4	+2.9	+63	+111	1+.82	+23	1+.18	1+.73	+51	+51

The grandam of this heifer is the \$30,000 top-selling cow of the 2013 Conley/Penner Sale, while the grandam sold one-half interest for \$52,500 as the top-selling female of the 2010 National Finals Angus Sale.

The grandam is a maternal sister to the \$48,000 PR Black Friday 0244, who sired the \$140,000 double-bred Earnestine bull Penners-CC Double Black 2257.

**Bred AI to calve March 2, 2024 to MUSGRAVE 316 COLOSSAL 137. Examined safe.**

### 59 ZWT QUEEN MOTHER 2214 [M1F]

Birth Date: 03-28-2022 Cow 20447245 Tattoo: 2214

+\*S A V Elation 7899  
 +S A V Engage 0859  
 19853780 #+\*S A V Blackcap May 1808  
 #+\*S A V Ignition 5629  
 ZWT Queen Mother F097  
 19430774 ZWT Queen Mother 5090  
 #+\*Sinclair Emulation XXP  
 +\*S A V Blackcap May 1782  
 #S A V Net Worth 4200  
 #+S A V May 2397  
 #\*S A V International 2020  
 #+S A V Blackcap May 5530  
 +\*Coleman Manning 0299  
 ZWT Queen Mother 3097

CED	BW	WW	YW	SC	Milk	MB	RE	\$M	\$W
-4	+5.3	+75	+122	N/A	+24	N/A	N/A	+61	+53

This powerful, high-performance heifer earned an individual weaning ratio of 110 from the first calf crop by the \$54,000 ZWT featured sire SAV Engage 0859.

The dam by SAV Ignition 5629 has a progeny weaning ratio of 102 on two calves.

**Bred AI to calve February 8, 2024 to MUSGRAVE 316 COLOSSAL 137. Examined safe.**

### 60 ZWT DIXIE ERICA 2098

Birth Date: 03-14-2022 Cow 20447259 Tattoo: 2098

+\*S A V Elation 7899  
 +S A V Engage 0859  
 19853780 #+\*S A V Blackcap May 1808  
 #+\*S A V Receptor 4837  
 ZWT Dixie Erica F494  
 19627787 GCC Dixie Erica 605U  
 #+\*Sinclair Emulation XXP  
 +\*S A V Blackcap May 1782  
 #S A V Net Worth 4200  
 #+S A V May 2397  
 #+\*S A V Registry 2831  
 \*S A V Blackcap May 4136  
 O C C Purpose 793P  
 O C C Dixie Erica 858R

CED	BW	WW	YW	SC	Milk	MB	RE	\$M	\$W
+2	+3.2	+66	+110	N/A	+21	N/A	N/A	N/A	+50

A bred heifer from the first calf crop by the \$54,000 ZWT sire SAV Engage 0859 who is the result of mating the one-time world record-selling bull SAV Elation 7899 with the herd sire producing Pathfinder Dam SAV Blackcap May 1808. The maternal grandsire is a full brother to both SAV Seedstock 4838 and SAV Sensation 5615.

**Bred AI to calve March 23, 2024 to DEER VALLEY BIG JON 022. Examined safe.**



SAV Blackcap May 1808 – Pathfinder Dam of SAV Engage 0859 whose daughters sell.



**61 ZWT QUEEN MOTHER 2228** [M1P]

Birth Date: 03-30-2022 Cow 20447244 Tattoo: 2228

#+S A V Renown 3439 +Rito 707 of Ideal 3407 7075  
 +\*ZWT Summitt 6507 \*S A V Blackcap May 4136  
 18561289 +\*Coleman Donna 714 #\*Connealy Onward  
 +\*ZWT Haymaker 3582 +\*Coleman Donna 386  
 ZWT Queen Mother F492 #+MF Net Return 8197  
 19627790 ZWT Queen Mother 4792 +\*Coleman Donna 714  
 \*Sinclair Picasso  
 +ZWT Queen Mother 9381

CED	BW	WW	YW	SC	Milk	MB	RE	\$M	\$W
+7	+1.4	+53	+90	N/A	+23	N/A	N/A	+84	+48

A valuable bred heifer by the \$45,000 ST Genetics proven sire ZWT Summitt 6507 from a dam by ZWT Haymaker 3582. This heifer features a pedigree that traces twice to the \$290,000 valued Coleman Donna 714.

**Bred AI to calve February 7, 2023 to SAV RIVERSIDE 2831.**  
**Examined safe.**

**62 ZWT LADY 2178**

Birth Date: 03-23-2022 Cow \*20447300 Tattoo: 2178

#\*S A V International 2020 #\*S A V Harvester 0338  
 +\*Brooking Major 7103 #+\*S A V Emblynette 5483  
 19148779 \*Soo Line Rose 1019 #\*Soo Line Motive 9016  
 \*E A Rose 918  
 +\*GCC New Game 5654C \*Dameron First Class  
 +\*ZWT Lady 7210 +\*Duff NE 9375 Georgina 845  
 18887450 +\*Gambles Lady 2021 #\*S A V Iron Mountain 8066  
 +Gambles Lady 3016

CED	BW	WW	YW	SC	Milk	MB	RE	\$M	\$W
+2	+2.5	+45	+82	N/A	+17	N/A	N/A	+43	+31

This bred heifer by the \$80,000 Brooking Major 7103 is from this championship cow family that produced Famous 7001. The dam is the product of an embryo mating sired by GCC New Game 5654C.

**Bred AI to calve March 3, 2024 to SAV RIVERSIDE 2831.**  
**Examined safe.**

**63 ZWT RUBY ERICA 2104**

Birth Date: 03-14-2022 Cow +20427946 Tattoo: 2104

\*Tehama Upward Y238 #\*Sitz Upward 307R  
 #+\*Tehama Tahoe B767 +Tehama Elite Blackbird T735  
 17817177 +\*Tehama Mary Blackbird Y684 #\*S A V Final Answer 0035  
 #+\*Basin Payweight 1682 Tehama Mary Blackbird T073  
 \*Rathbun Ruby Erica E617 #+\*Basin Payweight 006S  
 19298853 +\*Rathbun Ruby Erica B927 21AR O Lass 7017  
 #\*Connealy In Focus 4925  
 #Rathbun Ruby Erica W638

CED	BW	WW	YW	SC	Milk	MB	RE	\$M	\$W
+8	+6	+80	+132	+1.13	+32	+76	+77	+86	+87

This flush sister to Lots 112 and 113 is from an embryo mating by the Select Sires Pathfinder Sire Tehama Tahoe B767 from a donor dam by the ABS Global Pathfinder Sire Basin Payweight 1682 with progeny IMF and ribeye ratios of 143 and 106, respectively, on one head.

The dam sold to Valley Oaks of Missouri as a featured donor in the 2022 ZWT Sale.

**Bred AI to calve March 3, 2024 to ZWT DECLARATION 1551.**  
**Examined safe.**



**Rathbun Ruby Erica E617 – Dam of Lots 63, 112 and 113.**

**ZWT Queen Mother 2228 – Lot 61**



**ZWT Ruby Erica 2104 – Lot 63**





**ZWT Juanada 2046 – Lot 64**

## 64 ZWT JUANADA 2046

Birth Date:	Cow	Tattoo:
02-26-2022	20464780	2046
*Freys Cowboy Logic *Freys Django 0147 19824762 FAR Princess 7278  J&J Weigh Up 294 B/C Miss 0175 19772079 +Boss Miss Prowler 244		
**HA Cowboy Up 5405 *F A R Princess 148Z **Freys Appearance FAR Princess 226C **Plattemere Weigh Up K360 J & J Miss Georgina 294 *HF Prowler 43U *O C C Juanada 734P		

CED	BW	WW	YW	SC	Milk	MB	RE	\$M	\$W
+6	+1.3	+63	+112	N/A	+24	N/A	N/A	N/A	+54

A promising bred heifer from the first calf crop by the \$20,000 ZWT sire Freys Django 0147.

This female was produced as the first calf from a dam by the ZWT proven sire J&J Weigh Up 294.

**Bred AI to calve February 7, 2024 to ZWT DECLARATION 1551. Examined safe.**

## 65 ZWT BLACKBIRD 2184

Birth Date:	Cow	Tattoo:
03-24-2022	20464783	2184
*Connealy Mainstay Musgrave Mainstay 2059 19827655 SA Edwina Erica 567-313  *S A V Exceptional 7279 ZWT Blackbird 9038 20092718 ZWT Blackbird 5721		
*Connealy Glory 4127 Jayce of Conanga 318E **Musgrave Aviator BDM Edwina Erica 313 **Sinclair Emulation XXP *S A V Duke Girl 4441 *Sinclair Picasso ZWT Blackbird 9597		

CED	BW	WW	YW	SC	Milk	MB	RE	\$M	\$W
-8	+6.5	+94	+156	N/A	+29	N/A	N/A	+67	+64

This bred heifer records an outstanding individual weaning ratio of 135 from the first calf crop by the ZWT sire Musgrave Mainstay 2059.

This female was produced from a dam by the \$65,000 ZWT sire SAV Exceptional 7279.

**Bred AI to calve March 3, 2024 to MUSGRAVE 316 COLOSSAL 137. Examined safe.**

## 66 ZWT LADY 2180

Birth Date:	Cow	Tattoo:
03-24-2022	20447277	2180
#+*PVF Insight 0129 *Lafins Marvel 1801 19091613 Lafins Galaxie 3332  +*S A V Receptor 4837 ZWT Lady 6443 18556235 +*Whitstone Lady B227		
#*S A V Brilliance 8077 +*PVF Missie 790 +EXAR Consensus 19728 Lafins Galaxie 1241 #+*S A V Registry 2831 *S A V Blackcap May 4136 *S A V First Class 0207 +Whitstone Lady X224		

CED	BW	WW	YW	SC	Milk	MB	RE	\$M	\$W
+3	+2.5	+58	+104	N/A	+22	N/A	N/A	+66	+45

This bred heifer records an individual weaning ratio of 115 by the ZWT featured sire Lafins Marvel 1801 who reigned as Grand Champion at three state fairs.

The dam of this heifer is a maternal sister to Lot 67.

**Bred AI to calve February 7, 2024 to ZWT DECLARATION 1551. Examined safe.**

## 67 ZWT LADY 2269

Birth Date:	Cow	Tattoo:
04-09-2022	*20449842	2269
+*S A V Impact 5595 +*ZWT Intervention 7363 18987241 *E A Rose 918  *S A V First Class 0207 +*Whitstone Lady B227 17322972 +Whitstone Lady X224		
#*S A V International 2020 +S A V Emblynette 3301 #*S A V Final Answer 0035 E A Rose 738 #S A V Net Worth 4200 #*S A V Duke Girl 7348 #*Connealy Onward +Sinclair Lady 2P61 4465		

CED	BW	WW	YW	SC	Milk	MB	RE	\$M	\$W
+5	+1.8	+53	+92	+41	+33	+22	+34	+73	+58

A daughter of the \$42,500 ZWT Intervention 7363 from a dam who records a progeny weaning ratio of 103 on two calves.

This female stems from the famous donor Sinclair Lady 2P61 4465.

**Bred AI to calve February 7, 2024 to DEER VALLEY BIG JON 022. Examined safe.**

## 68 ZWT BLACKCAP 2340

Birth Date:	Cow	Tattoo:
04-27-2022	20447309	2340
+*S A V Impact 5595 +*ZWT Intervention 7363 18987241 *E A Rose 918  #BR Midland SBP Blackcap 8119 15999554 SBP Blackcap 5206		
#*S A V International 2020 +S A V Emblynette 3301 #*S A V Final Answer 0035 E A Rose 738 #*Twin Valley Precision E161 BR Royal Lass 7036-19 #WAR Alliance 9126 6006 +S B P Blackcap 361		

CED	BW	WW	YW	SC	Milk	MB	RE	\$M	\$W
+3	+3.2	+65	+111	N/A	+25	N/A	N/A	+71	+52

A daughter of the \$42,500 ZWT Intervention 7363 with an impressive individual weaning ratio of 119.

The dam is backed by the proven sires BR Midland and WAR Alliance 9126 6006.

**Bred AI to calve March 4, 2024 to SAV Riverside 2381. Examined safe.**



**ZWT Eriskay 2035 – Lot 69**

## 69 ZWT ERISKAY 2035

Birth Date:	Cow	Tattoo:
02-22-2022	20464757	2035
#*Plattemere Weigh Up K360 J&J Weigh Up 294 18004546 J & J Miss Georgina 294  +*S A V Ignition 5629 ZWT Eriskay 9593 19893318 ZWT Eriskay 6925		
#*Sitz Upward 307R #Barbara of Plattemere 337 #TC Romeo 917 J&J Miss Georgina 927 #*S A V International 2020 #+S A V Blackcap May 5530 +*ZWT Brigade 3665 ZWT Eriskay B 400		

CED	BW	WW	YW	SC	Milk	MB	RE	\$M	\$W
+3	+2.0	+76	+128	N/A	+29	N/A	N/A	+70	+67

This daughter of the ZWT Proven sire J&J Weigh Up 294 records an individual weaning ratio of 119.

This female was produced as the first calf from a dam by SAV Ignition 5629.

**Bred AI to calve February 8, 2024 to ZWT DECLARATION 1551. Examined safe.**

## 70 ZWT EMPRESS 1675

Birth Date:	Cow	Tattoo:
11-12-2021	*20337821	1675
#+*Sinclair Emulation XXP +*ZWT Emulation 6143 18506701 +*Coleman Donna 386  +*ZWT Summitt 6507 +*ZWT Empress G315 20136499 EXAR Empress 2622		
#*N Bar Emulation EXT #N Bar Primrose Y3051 #Basin Rainmaker 654X +KMK Donna J311 #+*S A V Renown 3439 +*Coleman Donna 714 #*EXAR Upshot 0562B +PF 0T26 Empress 8113		

CED	BW	WW	YW	SC	Milk	MB	RE	\$M	\$W
+3	+2.4	+61	+109	N/A	+26	N/A	N/A	+71	+51

A daughter of the featured sires ZWT Emulation 6143 with an individual weaning ratio of 106 from a dam by the ST Genetics sire ZWT Summitt 6507.

This female is from the Empress family that has produced numerous top sellers.

**Bred AI to calve March 2, 2024 to DEER VALLEY BIG JON 022. Examined safe.**





Buford Miss Wix 170Y – Grandam of Lot 71.

71	ZWT MISS WIX 1679 [M1F]	
	Birth Date: 11-14-2021	Cow 20372017
	Tattoo: 1679	
	#+S A V Resource 1441	+Rito 707 of Ideal 3407 7075
	*S A V Real Pride 4475	*S A V Blackcap May 4136
	17923531 S A V Madame Pride 0075	#+S A F 598 Bando 5175
		S A V Madame Pride 8264
	*Buford Oklahoma X239	#S A V Pioneer 7301
	+ZWT Miss Wix 5705	J Bar 7 Elba 7297
	18260208 Buford Miss Wix 170Y	#+MF Net Return 8197
		J Bar 7 Miss Wix 7282

CED	BW	WW	YW	SC	Milk	MB	RE	\$M	\$W
+2	+2.7	+59	+103	N/A	+21	N/A	N/A	+53	+45

A young female by the ZWT proven sire SAV Real Pride 4475. The dam is a result of mating the \$52,500 Accelerated Genetics sire Buford Oklahoma X239 with the \$21,500 dam of the \$50,000 Buford Safe Deposit A167.

Bred to calve November 12, 2023 to DEER VALLEY BIG JON 022. Examined safe.



ZWT Miss Wix 1679 – Lot 71

72	ZWT BLACKCAP 1540 [DDF-M1F]	
	Birth Date: 09-21-2021	Cow *20304553
	Tattoo: 1540	
	+S A V Quarterback 7933	#+S A V Regard 4863
	*Foster Quarterback 9524	+S A V Blackcap May 3525
	19698651 +Foster Everelda Entense A04	#+MF Net Return 8197
		+Shadybrook Ever Entense 491G
	+S A V Revolution 4846	*S A V Revere 1180
	ZWT Blackcap 7811	*S A V Blackcap May 4136
	19687487 ZWT Blackcap 4559	+*ZWT The Judge 1011
		ZWT Blackcap 2351

CED	BW	WW	YW	SC	Milk	MB	RE	\$M	\$W
-1	+3.2	+60	+107	N/A	+29	N/A	N/A	+68	+50

This bred heifer is a granddaughter of both the \$180,000 SAV Quarterback 7933 and the \$100,000 SAV Revolution 4846. This female traces to OCC Blackcap 753L.

Will sell with a calf at side (Lot 72A) by DEER VALLEY BIG JON 022.

73	ZWT LADY 1613	
	Birth Date: 10-20-2021	Cow *20340196
	Tattoo: 1613	
	+S A V Quarterback 7933	#+S A V Regard 4863
	*Foster Quarterback 9524	+S A V Blackcap May 3525
	19698651 +Foster Everelda Entense A04	#+MF Net Return 8197
		+Shadybrook Ever Entense 491G
	+S A V International 6832	#S A V International 2020
	ZWT Lady 8396	+S A V Emblynette 3301
	19724764 ZWT Lady 5431	+*Buford Transformer Y353
		+ZWT Lady 3071

CED	BW	WW	YW	SC	Milk	MB	RE	\$M	\$W
+6	+9	+59	+101	N/A	+28	1+.26	1+.33	+72	+57

A granddaughter of both the \$180,000 SAV Quarterback 7933 and the ZWT sire SAV International 6832.

This female traces to Sinclair Lady 3M19 4465.

Bred to calve November 24, 2023 to DEER VALLEY BIG JON 022. Examined safe.

74	ZWT RITA 9506	
	Birth Date: 10-01-2019	Cow 19893293
	Tattoo: 9506	
	#S A V International 2020	#S A V Harvester 0338
	+*Brooking Major 7103	#+S A V Emblynette 5483
	19148779 *Soo Line Rose 1019	*Soo Line Motive 9016
		*E A Rose 918
	+S A V Stallion 2413	#S A V Mustang 9134
	ZWT Rita 5194	*S A V Madame Pride 5290
	18205097 +ZWT Rita 9301	*DCC New Look 101
		+G A R Ext 669

CED	BW	WW	YW	SC	Milk	MB	RE	\$M	\$W
+2	+2.5	+54	+88	1+.84	+31	1+.32	1+.52	+66	+56

This daughter of the \$80,000 Brooking Major 7103 has a progeny weaning ratio of 112 on her first calf.

The grandam is by the proven sire SAV Stallion 2413.

Sells with a bull calf at side (Lot 74A) calved September 18, 2023 by BROOKING GOLD COIN 8069.



*Dameron Northern Miss 8214*

Lot 75



*Full sister to First Class*





Dameron Northern Miss 3114 – Dam of Lot 75.

**76 ZWT ELDORENE 8229**

Birth Date: 02-25-2018 Cow 19298035 Tattoo: 8229

\*S A V First Class 0207 #S A V Net Worth 4200  
 +\*S A V First Prize 3642 #S A V Duke Girl 7348  
 17633777 +S A V Emblynette 3301 #S A F 598 Bando 5175  
 +\*Buford Transformer Y353 #S A V Emblynette 7319  
 #S A V Final Answer 0035  
 #S A V Elba 4436  
 +\*Angus Alliance Winchester975  
 +ZWT Eldorene 9303

CED	BW	WW	YW	SC	Milk	MB	RE	\$M	\$W
+6	+1.6	+52	+84	N/A	+23	I+.23	I+.44	+86	+48

An impressive daughter of the ZWT proven sire SAV First Prize 3642 from a dam with a progeny weaning ratio of 101 on two calves.

The sire of this cow is a maternal brother to the \$130,000 ZWT sire SAV Hesston 2217.

**Bred to calve November 17, 2023 to a Simmental bull.  
 Examined safe.**



ZWT Eldorene 8229 – Lot 76

**75 DAMERON NORTHERN MISS 8214**

Birth Date: 11-14-2018 Cow \*19396614 Tattoo: 8214

#Exar Lutton 1831 #+Northern Improvement 4480 GF  
 EXG RS First Rate S903 R3 Exar Saras Dream 9809  
 15484543 Rafter S Blackcap P909 Exar Expand 1241  
 +JMS Blackcap JM86  
 +Dameron P V F Raptor 702 #+Rito 9FB3 of 5H11 Fullback  
 Dameron Northern Miss 3114 Davis Proven Queen 3026  
 14489054 #+Dameron Miss 550 #\*N Bar Emulation EXT  
 Finks 8130 of 678-549

CED	BW	WW	YW	SC	Milk	MB	RE	\$M	\$W
+2	+2.8	+60	+102	I-.08	+24	I+.34	I+.34	+29	+49

A full sister to the famous National Western Grand Champion Bull Dameron First Class, who is known as the sire of numerous champions and near record-selling semen. Other full siblings include a National Western Grand Champion Female.

**Bred to calve December 8, 2023 to LAFLINS MAVEL 1801.  
 Examined safe.**



Dameron First Class – Full brother to Lot 75.

**77 ZWT PRIMROSE 9068**

Birth Date: 03-10-2019 Cow \*20031360 Tattoo: 9068

\*S A V Revere 1180 #+S A V 707 Rito 9969  
 +\*S A V Revolution 4846 #A C Duke Girl 57  
 17923418 #S A V 8180 Traveler 004  
 +\*S A V May 2397  
 +\*S A V First Prize 3642 #S A V First Class 0207  
 +ZWT Primrose 5068 #S A V Emblynette 3301  
 18205058 O C C Primrose 932L +O C C Just Right 619J  
 +O C C Primrose 677H

CED	BW	WW	YW	SC	Milk	MB	RE	\$M	\$W
+0	+1.7	+48	+86	N/A	+22	N/A	N/A	+53	+41

The first of two three-quarter sisters sired by the \$100,000 SAV Revolution 4846 descending from the \$40,000 valued ZWT foundation donor OCC Primrose 932L.

This female is from the exact same Lady family as the feed efficiency matriarch Ideal 4465 of 6807 4286.

**Sells with a heifer calf at side (Lot 77A) calved September 19, 2023 by LAFLINS MARVEL 1801.**

**77B ZWT PRIMROSE 2767**

Birth Date: 11-06-2022 Cow 20693321 Tattoo: 2767

#+\*PVF Insight 0129 #\*S A V Brilliance 8077  
 \*Lafins Marvel 1801 +\*PVF Missie 790  
 19091613 Lafins Galaxie 3332 +EXAR Consensus 1972B  
 +Lafins Galaxie 1241  
 +\*S A V Revere 1180  
 +\*S A V Blackcap May 4136  
 +\*S A V First Prize 3642  
 O C C Primrose 932L

CED	BW	WW	YW	SC	Milk	MB	RE	\$M	\$W
I+.3	I+.2.0	I+.54	I+.98	N/A	I+.20	N/A	N/A	+73	+41

A fall yearling heifer by the ZWT featured sire and popular champion Lafins Marvel 1801.

The dam is a three-quarter sister to Lot 79 by the \$100,000 SAV Revolution 4846, stemming from the \$40,000 valued ZWT foundation donor OCC Primrose 932L.

**78 ZWT JESI LYNN 2311**

Birth Date: 04-16-2022 Cow 20447293 Tattoo: 2311

#+\*S A V Resource 1441 #Rito 707 of Ideal 3407 7075  
 +\*S A V Real Pride 4475 #S A V Blackcap May 4136  
 17923531 S A V Madame Pride 0075 #+S A F 598 Bando 5175  
 S A V Madame Pride 8264  
 #\*S A V Harvester 0338  
 +S A V Emblynette 3301  
 +\*Buford Transformer Y353  
 ZWT Jesi Lynn 9145 #S A V Emblynette 3301  
 20092710 ZWT Jesi Lynn 5149 +\*Buford Transformer Y353  
 ZWT Jesi Lynn 3044

CED	BW	WW	YW	SC	Milk	MB	RE	\$M	\$W
+4	+2.4	+54	+95	N/A	+20	N/A	N/A	+68	+41

A bred heifer backed by the proven sires SAV Real Pride 4475 and SAV Hesston 2217, whose dams are among the most famous cows produced in the SAV program.

**Bred AI to calve March 3, 2024 to ZWT DECLARATION 1551.  
 Examined safe.**

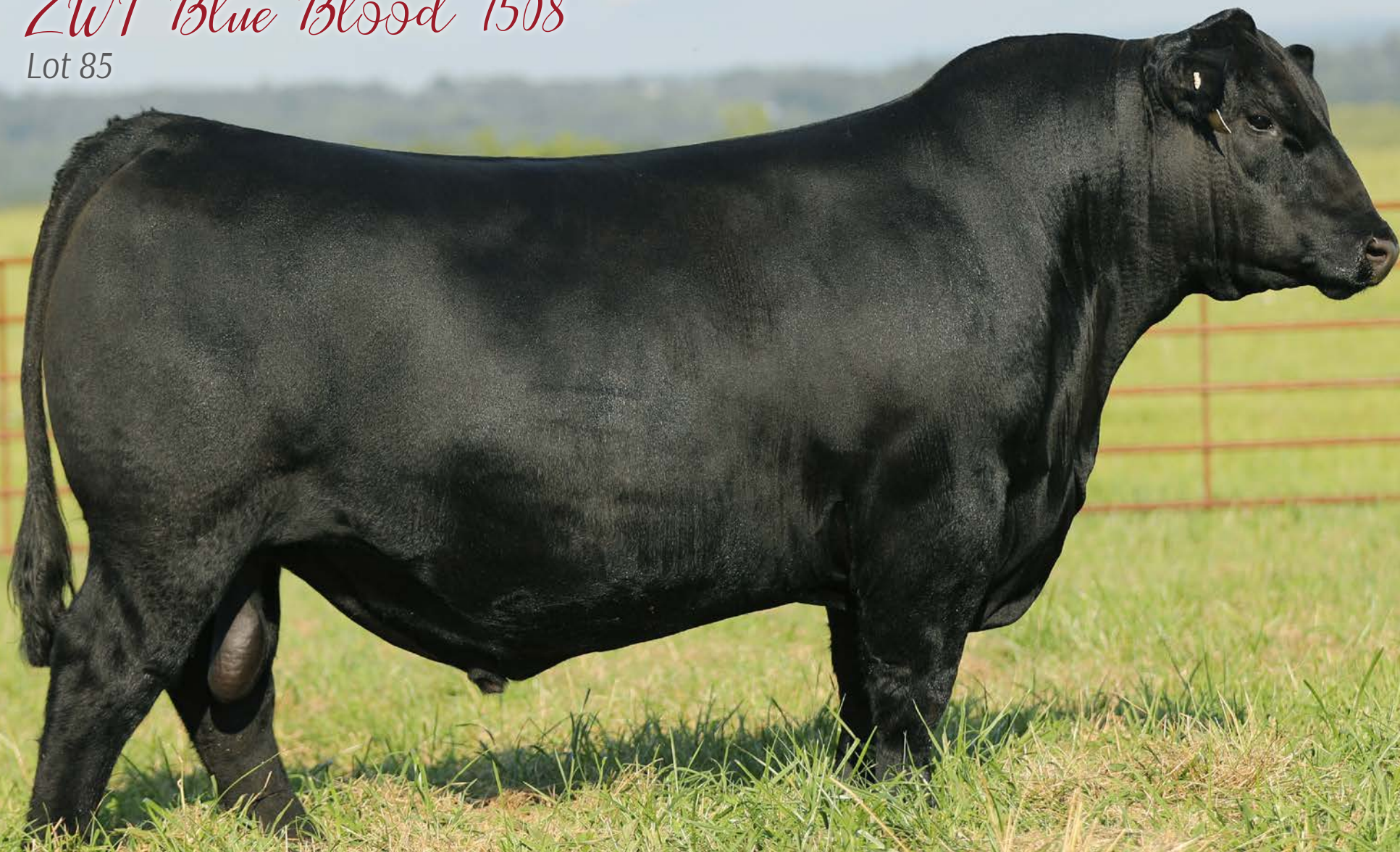


OCC Primrose 932L – Grandam of Lot 77.



# *ZWT Blue Blood 1508*

Lot 85



*Blue Blood Pedigree*



**85 ZWT BLUE BLOOD 1508**

Birth Date: 09-05-2021 Bull #\*20304546 Tattoo: 1508

+\*S A V Rainfall 6846 #+\*Coleman Charlo 0256

+\*S A V Bloodline 9578 \*S A V Blackcap May 4136

19542324 #\*S A V Emblynette 2369 #+\*S A V 707 Rito 9969

#\*S A V Final Answer 0035 #Sitz Traveler 8180

\*E A Rose 918 S A V Emulous 8145

16460381 E A Rose 738 #Sitz Tradition RLS 8702

M A S Bando Rose 4536

CED	BW	WW	YW	SC	Milk	MB	RE	\$M	\$W
+1	+2.2	+64	+115	+60	+26	+1.59	+47	+52	+58

**SELLING ONE-HALF INTEREST AND FULL POSSESSION.**

Featuring a royal pedigree combined with awesome performance and phenotype, this outstanding ZWT herd sire is from the mating of the \$250,000 ZWT featured sire SAV Bloodline 9578 with the \$100,000 valued ZWT foundation donor EA Rose 918.

His full brother, ZWT Royalty 1503, was selected by Buford Ranches as the \$20,000 top-selling bull of the 2022 ZWT Sale where a maternal brother, ZWT Bellagio 1515, was the \$10,500 second top-selling bull to C-4 Land and Cattle Company of Oklahoma.

Maternal brothers include the famous AI sire Brooking Bank Note 4040; Brooking Intervention 7363, who sold one-half interest for \$42,500 as the top-selling bull of the 2018 ZWT Sale; and ZWT Infusion F182, who sold one-half interest for \$15,000 as the top-selling Lot 1 bull of the 2019 ZWT Sale.

A maternal sister who is the \$50,000 top-selling Lot 1 female of the 2018 ZWT Sale produced the \$29,000 top-selling cow of the 2021 ZWT Sale where maternal sisters to this bull where the \$30,000 and \$22,000 top-selling heifer calves.

Another maternal sister is the \$37,500 top-selling female of the 2022 ZWT Sale where still another maternal sister was the \$25,000 top-selling cow.

**Birth weight 97 pounds, 205-day weight 680.**



**EA Rose 918** – Dam of Lots 2, 85 and 86 and grandam of Lots 3 through 6.



**ZWT Royalty 1503** – Full brother to Lot 85, maternal brother to Lots 2 and 86 and to the dams of Lots 3 through 6.



**ZWT Infusion F182**  
– Maternal brother to  
Lots 2, 85 and 86.



**ZWT Intervention  
7363** – Maternal  
brother to Lots 2, 85  
and 86.



**Brooking Bank Note 4040** – Maternal brother to Lots 2, 85 and 86 and to the dams of Lots 3 through 6.



*ZWT Universal 1558*

Lot 86



*Universal Favorite*



**86 ZWT UNIVERSAL 1558**

Birth Date: 09-29-2021 Bull #\*20304557 Tattoo: 1558

#+S A V Bismarck 5682

**Bar-E-L Natural Law 52Y**

19310190 Bar-E-L Magnolia 143K

#\*S A V Final Answer 0035

**\*E A Rose 918**

16460381 E A Rose 738

#+\*G A R Grid Maker

S A V Abigale 0451

Bar E L MCC 365 Icon 20H

Double Four Duchess 12G

#Sitz Traveler 8180

S A V Emulous 8145

#Sitz Tradition RLS 8702

M A S Bando Rose 4536

CED	BW	WW	YW	SC	Milk	MB	RE	\$M	\$W
1+6	1+1.6	1+54	1+98	1+77	1+28	+43	+46	+58	+55

**SELLING ONE-HALF INTEREST AND FULL POSSESSION.**

This impressive and intriguing herd sire produced in the embryo program at ZWT Ranch is a maternal brother to Lots 2 and 86 from the \$100,000 valued EA Rose 918 and sired by the successful Canadian sire Bar-E-L Natural Law 52Y.

A maternal brother is the \$20,000 top-selling bull of the 2022 ZWT Sale where another was the \$10,500 second top-seller, and a maternal sister is the \$37,500 top-selling female in the same sale where another maternal sister was the \$25,000 top-selling cow.

Maternal sisters in the 2021 ZWT Sale included the \$30,000 and \$22,000 top-selling heifer calves while the \$29,000 top-selling cow of the same sale was produced from a maternal sister.

Other maternal siblings include the \$50,000 top-selling Lot 1 female of the 2018 ZWT Sale as well the noted individuals Brooking Bank Note 4040 and Soo Line Rose 1019, plus ZWT Intervention 7363 who is the \$42,500 top-selling bull of the 2018 ZWT Sale, and ZWT Infusion F182 who is the \$15,000 top-selling Lot 1 bull from the 2019 ZWT Sale.

Seven maternal sisters post a collective progeny weaning ratio of 104.

**Birth weight 82 pounds, 205-day weight 583.**



**EA Rose 918** – Dam of Lots 2, 85 and 86 and grandam of Lots 3 through 6.

# ZWT RANCH

**EA Rose 918** – The 2014 Canadian Farm Fair International Grand Champion Female, also named the 2014 Prince Albert Exposition Supreme Champion Female and the 2014 Canadian Western Agribition RBC Beef Supreme Top Ten Finalist.





# *ZWT Bloodstock 2033*

Lot 87



*Massive Performance*





**PVA Blackcap May 4397** – Dam of  
Lots 15, 15A, 87 and 140.

## 88 ZWT BLOODLINE 2108

Birth Date: 03-14-2022 Bull +\*20447224 Tattoo: 2108

+\*S A V Rainfall 6846  
+\*S A V Bloodline 9578  
19542324 #\*S A V Emblynnette 2369  
#\*Connealy Mentor 7374  
Woodall 240 of 9451 Lucille CM  
17507622 +JMc Black Lucille 9451 5298  
#\*Coleman Charlo 0256  
\*S A V Blackcap May 4136  
#\*S A V 707 Rito 9969  
+\*S A V Emblynnette 7566  
#G A R Retail Product  
#Executa of Conanga 939  
#\*S A V Final Answer 0035  
Black Lucy of Conanga 1864

CED	BW	WW	YW	SC	Milk	MB	RE	\$M	\$W
I+1	+1.7	+68	+125	I+.80	+23	+47	+66	+47	+55

A flush brother to the heifer featured as Lot 56 from an embryo mating by the \$250,000 SAV Bloodline 9578.  
This bull records an individual birth ratio of 93 combined with an individual weaning ratio of 105.  
The dam is backed by multiple generations of Pathfinder Sires, tracing to a third dam produced in the Connealy herd.  
**Birth weight 80 pounds, 205-day weight 696.**



**Woodall 240 of 9451 Lucille CM** – Dam of  
Lots 56 and 88.

## 87 ZWT BLOODSTOCK 2033

Birth Date: 02-21-2022 Bull +\*20449066 Tattoo: 2033

+\*S A V Rainfall 6846  
+\*S A V Bloodline 9578  
19542324 #\*S A V Emblynnette 2369  
#\*S A V International 2020  
+\*PVA Blackcap May 4397  
17884732 #\*S A V May 2397  
#\*Coleman Charlo 0256  
\*S A V Blackcap May 4136  
#\*S A V 707 Rito 9969  
+\*S A V Emblynnette 7566  
#\*S A V Harvester 0338  
#\*S A V Emblynnette 5483  
#\*S A F 598 Bando 5175  
S A V May 7238

CED	BW	WW	YW	SC	Milk	MB	RE	\$M	\$W
I-2	I+3.9	I+68	I+122	I+.53	I+22	+31	+56	+39	+49

SELLING ONE-HALF INTEREST AND FULL POSSESSION.

A massive performance bull produced in the embryo program with a pedigree backed multiple times by both the herd sire producing Blackcap May and Emblynnette families.

The proven sire is the \$250,000 top-selling lead-off bull of the 2020 SAV Sale, while the donor dam is the featured Lot 1 cow of the 2022 ZWT Sale where she sold one-half interest for \$20,000 to Montana Ranch after being the top-valued female of two past Pasture View Sales.

The dam records a progeny weaning ratio of 108 on two natural calves along with progeny IMF and ribeye ratios of 107 and 103, respectively, on five head.

The dam is a maternal sister to SAV Blackcap May 4136, the all-time world record income producing cow with more than \$10.3 million in progeny sales to date.

Both grandams are influential Pathfinder Dams.

**Birth weight 90 pounds, 205-day weight 683.**

## 89 ZWT BLOODLINE 2139

Birth Date: 03-19-2022 Bull \*20447221 Tattoo: 2139

+\*S A V Rainfall 6846  
+\*S A V Bloodline 9578  
19542324 #\*S A V Emblynnette 2369  
#\*S A V Resource 1441  
+\*CampTown Ever Entense C17  
18531366 +\*CampTown Ever Entense Z01  
#\*Coleman Charlo 0256  
\*S A V Blackcap May 4136  
#\*S A V 707 Rito 9969  
+\*S A V Emblynnette 7566  
+Rito 707 of Ideal 3407 7075  
\*S A V Blackcap May 4136  
#\*Soo Line Motive 9016  
+\*Limestone Ever Entense W578

CED	BW	WW	YW	SC	Milk	MB	RE	\$M	\$W
-6	+4.7	+63	+122	I+.66	+17	+29	+48	+40	+34

A blending of the proven performance genetics of SAV Bloodline 9578 and SAV Resource 1441.

This bull is backed by the herd sire producing Everelda Entense family.

**Birth weight 95 pounds, 205-day weight 645.**



**SAV Bloodline 9578** – Featuring his progeny.

## 90 ZWT BRAVO 1654

Birth Date: 11-07-2021 Bull +\*20372009 Tattoo: 1654

#\*Coleman Charlo 0256  
+\*Coleman Bravo 6313  
18734838 +\*Coleman Donna 714  
+\*S A V Hesston 2217  
+\*ZWT Elba 5053  
18383796 +SIEBRING Elba 247  
#\*O C C Paxton 730P  
+Bohi Abigale 6014  
#\*Connealy Onward  
+\*Coleman Donna 386  
#\*S A V Harvester 0338  
+S A V Emblynnette 3301  
#S A V Prosperity 9131  
+S A V Elba 801

CED	BW	WW	YW	SC	Milk	MB	RE	\$M	\$W
I+7	I+2.4	I+62	I+106	I+.78	I+26	I+31	I+36	+78	+63

A son of the \$450,000 Coleman Bravo 6313 with a pedigree backed by leading herd sire producing cow families.

This bull features an outstanding disposition, and is from a second-generation ZWT Elba donor who balances a progeny birth ratio of 99 with a progeny weaning ratio of 108 on her first natural calf.

**Birth weight 88 pounds, 205-day weight 571.**

**ZWT RANCH**





92 ZWT WEIGH UP 1705		Birth Date: 09-19-2021	Bull *20597885	Tattoo: 1705
#*Plattemere Weigh Up K360		#*Sitz Upward 307R		
J&J Weigh Up 294		#Barbara of Plattemere 337		
18004546 J & J Miss Georgina 294		#TC Romeo 917		
+*ZWT Summitt 6507		J&J Miss Georgina 927		
+*ZWT Empress G312		#*S A V Renown 3439		
20136501 EXAR Empress 2622		+*Coleman Donna 714		
		#*EXAR Upshot 0562B		
		+PF 0T26 Empress 8113		

CED	BW	WW	YW	SC	Milk	MB	RE	\$M	\$W
+5	+1.9	+70	+123	N/A	+25	+61	+67	+67	+58

An impressive son of the ZWT proven sire J&J Weigh Up 294 selected as highlight of the Badger Creek Dispersal in Kansas. This bull records individual weaning and yearling ratios of 105 along with individual IMF and ribeye ratios of 121 and 107, respectively, from a dam by the ST Genetics proven sire ZWT Summitt 6507.

Birth weight 83 pounds, 205-day weight 693.

ZWT Weigh Up 1705 – Lot 92



ZWT Rocky Top 1704 – Lot 94



ZWT Summit 1544 – Lot 93

93 ZWT SUMMIT 1544		Birth Date: 09-22-2021	Bull 20304554	Tattoo: 1544
#*S A V Renown 3439		+Rito 707 of Ideal 3407 7075		
+*ZWT Summitt 6507		*S A V Blackcap May 4136		
18561289 +*Coleman Donna 714		#*Connealy Onward		
		+*Coleman Donna 386		
#*Sinclair Emulation XXP		#*N Bar Emulation EXT		
+ZWT Kinochtry Beauty F210		#N Bar Primrose Y3051		
19907070 N Bar Kinochtry Beauty J2311		#*N Bar Emulation EXT		
		N Bar Heiress A1389		

CED	BW	WW	YW	SC	Milk	MB	RE	\$M	\$W
+8	+0	+46	+88	N/A	+20	+24	+43	+69	+38

Calving-ease and maternal prospect by the ST Genetics proven sire ZWT Summitt 6507.

The dam features a linebred pedigree, and she is a product of the embryo program at ZWT Ranch by the Pathfinder Sire Sinclair Emulation XXP.

The grandam is a ZWT foundation female who produced two consecutive ZWT top-selling bulls, and she is the result of a sire/daughter mating by N Bar Emulation EXT.

Birth weight 77 pounds, 205-day weight 629.

94 ZWT ROCKY TOP 1704 [M1P]		Birth Date: 09-10-2021	Bull 20375196	Tattoo: 1704
#*S A V Renown 3439		+Rito 707 of Ideal 3407 7075		
+*ZWT Summitt 6507		*S A V Blackcap May 4136		
18561289 +*Coleman Donna 714		#*Connealy Onward		
		+*Coleman Donna 386		
+*Brooking Major 7103		#*S A V International 2020		
ZWT Everelda Entense 9504		*Soo Line Rose 1019		
20365106 ZWT Everelda Entense 5097		+*Angus Alliance Winchester975		
		+ZWT Everelda Entense 2679		

CED	BW	WW	YW	SC	Milk	MB	RE	\$M	\$W
+7	+1.2	+59	+102	N/A	+25	N/A	N/A	+90	+53

A son of the ST Genetics proven sire ZWT Summitt 6507, who is the top-selling bull of a past ZWT Sale.

The dam by the \$80,000 Brooking Major 7103 has a progeny birth ratio of 98 combined with a progeny weaning ratio of 106 on two calves.

Birth weight 74 pounds, 205-day weight 709.





## 95 ZWT QUARTERBACK 1584

Birth Date: 10-13-2021 Bull 20597887 Tattoo: 1584

+\*S A V Quarterback 7933

\*Foster Quarterback 9524

19698651 +\*Foster Everelda Entense A04

+\*S A V Mainstream 3643

ZWT Kem F026

20596371 ZWT Kem 3778

#+\*S A V Regard 4863

+\*S A V Blackcap May 3525

#+MF Net Return 8197

+Shadybrook Ever Entense 491G

#S A V Mustang 9134

+S A V Emblynette 3301

+\*ZWT 75 Chancellor 1232

+ZWT Kem 9304

CED	BW	WW	YW	SC	Milk	MB	RE	\$M	\$W
+3	+2.9	+65	+110	N/A	+30	+35	+28	+69	+58

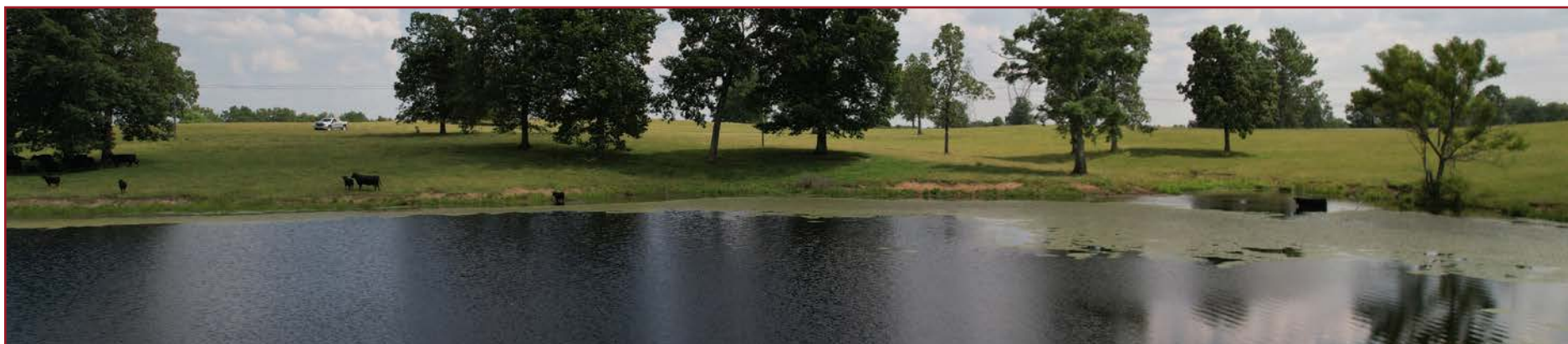
This grandson of the Genex high-performance sire SAV Quarterback 7933 has individual weaning and yearling ratios of 106 and 104, respectively, combined with an individual IMF ratio of 108.

This impressive bull was produced from a dam by the ZWT proven sire SAV Mainstream 3643.

**Birth weight 89 pounds, 205-day weight 758.**



**ZWT Quarterback 1584 – Lot 95**







**ZWT Net Worth 2031 – Lot 99**

## 99 ZWT NET WORTH 2031

Birth Date: 02-21-2022 Bull +\*20534150 Tattoo: 2031

#S A V 8180 Traveler 004  
#S A V Net Worth 4200  
14739204 +S A V May 2410

#Soo Line Motive 9016  
+\*Meyer Rosetta 213Z  
19401244 FCC Rosetta 824U

#Sitz Traveler 8180  
+Boyd Forever Lady 8003  
#S A F 598 Bando 5175  
#S A V May 6269  
HF Kodiak 5R  
TLA Beauty 5R  
+O C C Nectar 702N  
FCC Rosetta 8955

CED	BW	WW	YW	SC	Milk	MB	RE	\$M	\$W
I+5	+1.2	+50	+92	I+4.7	+30	+20	+54	+62	+51

This powerful prospect is the first of two flush brothers by the record-setting Genex Pathfinder Sire SAV Net Worth 4200. The donor dam is by the \$55,000 Pathfinder Sire Soo Line Motive 9016, backed by the famous Rosetta cow family.

**Birth weight 80 pounds, 205-day weight 646.**

## 100 ZWT ASSET 2041

Birth Date: 02-23-2022 Bull +\*20534148 Tattoo: 2041

#S A V 8180 Traveler 004  
#S A V Net Worth 4200  
14739204 +S A V May 2410

#Soo Line Motive 9016  
+\*Meyer Rosetta 213Z  
19401244 FCC Rosetta 824U

#Sitz Traveler 8180  
+Boyd Forever Lady 8003  
#S A F 598 Bando 5175  
#S A V May 6269  
HF Kodiak 5R  
TLA Beauty 5R  
+O C C Nectar 702N  
FCC Rosetta 8955

CED	BW	WW	YW	SC	Milk	MB	RE	\$M	\$W
I+5	I+1.9	I+51	I+94	I+4.7	I+30	+13	+64	+63	+54

This flush brother to the previous bull is by the Genex Pathfinder Sire SAV Net Worth 4200 with an individual ribeye ratio of 111.

The donor dam from the Rosetta family is by the \$55,000 Pathfinder Sire Soo Line Motive 9016.

**Birth weight 78 pounds, 205-day weight 673.**

## 101 ZWT RENOVATION 2198

Birth Date: 03-25-2022 Bull +\*20447213 Tattoo: 2198

#+\*S A V Renown 3439  
+\*S A V Renovation 6822  
18579309 +\*S A V Madame Pride 0151

#+\*S A V 707 Rito 9969  
+\*S A V Madame Pride 2551  
17294203 \*S A V Madame Pride 5290

+Rito 707 of Ideal 3407 7075  
\*S A V Blackcap May 4136  
#+S A V 004 Density 4336  
S A V Madame Pride 0075  
+Rito 707 of Ideal 3407 7075  
BR Polly 8077-472  
#S A V 8180 Traveler 004  
S A V Madame Pride 0075

CED	BW	WW	YW	SC	Milk	MB	RE	\$M	\$W
I+0	I+3.3	I+63	I+116	I+1.24	I+18	+39	+40	+43	+45

The first of two outstanding flush brothers who are double-bred to the herd sire producing Madame Pride family from an embryo mating by the \$47,500 Semex sire SAV Renovation 6822.

The outstanding donor dam records a progeny weaning ratio of 101 on two calves and a progeny yearling ratio of 102 on one head, with a daughter in production who weaned her first calf with a ratio of 111.

Maternal sisters are featured as Lots 22, 22A and 22B, and a maternal brother is featured as Lot 142.

**Birth weight 100 pounds, 205-day weight 707.**

## 102 ZWT RENOVATION 2170

Birth Date: 03-22-2022 Bull +\*20447214 Tattoo: 2170

#+\*S A V Renown 3439  
+\*S A V Renovation 6822  
18579309 +\*S A V Madame Pride 0151

#+\*S A V 707 Rito 9969  
+\*S A V Madame Pride 2551  
17294203 \*S A V Madame Pride 5290

+Rito 707 of Ideal 3407 7075  
\*S A V Blackcap May 4136  
#+S A V 004 Density 4336  
S A V Madame Pride 0075  
+Rito 707 of Ideal 3407 7075  
BR Polly 8077-472  
#S A V 8180 Traveler 004  
S A V Madame Pride 0075

CED	BW	WW	YW	SC	Milk	MB	RE	\$M	\$W
I+0	+3.9	+64	+116	I+1.24	+18	+34	+33	+43	+41

This flush brother to the previous bull is double-bred to both the Madame Pride family and to the great breeding bull Rito 707 of Ideal 3407 7075 backed by the proven sires SAV Renovation 6822 and SAV 707 Rito 9969.

The dam is a flush sister to the \$100,000 SAV Realist 2846.

**Birth weight 96 pounds, 205-day weight 652.**



**ZWT Asset 2041 – Lot 100**



**ZWT Renovation 2198 – Lot 101**

## 103 ZWT RENOVATION 2106

Birth Date: 03-14-2022 Bull 20447225 Tattoo: 2106

#+\*S A V Renown 3439  
+\*S A V Renovation 6822  
18579309 +\*S A V Madame Pride 0151

+\*S A V Response 2411  
ZWT Donna 6001  
18429921 +Coleman Donna 2357

+Rito 707 of Ideal 3407 7075  
\*S A V Blackcap May 4136  
#+S A V 004 Density 4336  
S A V Madame Pride 0075  
#+\*S A V 707 Rito 9969  
S A V Madame Pride 0075  
#\*Sitz Upward 307R  
+\*Coleman Donna 6143

CED	BW	WW	YW	SC	Milk	MB	RE	\$M	\$W
+7	+2	+62	+109	N/A	+21	+16	+53	+63	+52

This son of SAV Renovation 6822 combines an individual birth ratio of 82 with an individual weaning ratio of 107.

This bull is double-bred to the Madame Pride family from a dam by the \$90,000 SAV Response 2411, and she records a progeny birth ratio of 98 combined with a progeny weaning ratio of 105 on three calves.

**Birth weight 65 pounds, 205-day weight 710.**

## 104 ZWT RESOLVE 2162

Birth Date: 03-22-2022 Bull 20447296 Tattoo: 2162

#+\*S A V Renown 3439  
+\*Coleman Resolve 7219  
19102305 +\*Coleman Donna 714

\*S A V First Class 0207  
Siebring Elba 319  
17590802 +S A V Elba 919

+Rito 707 of Ideal 3407 7075  
\*S A V Blackcap May 4136  
#\*Connealy Onward  
+\*Coleman Donna 386  
#S A V Net Worth 4200  
#\*S A V Duke Girl 7348  
#F V 20K King 308M  
S A V Elba 1094

CED	BW	WW	YW	SC	Milk	MB	RE	\$M	\$W
+5	+2.2	+58	+101	N/A	+28	+17	+43	+67	+52

A blending of famous families sired by Coleman Resolve 7209. This bull records an individual weaning ratio of 104 from a dam with a progeny birth ratio of 99 combined with a progeny weaning ratio of 109 on three calves.

**Birth weight 82 pounds, 205-day weight 581.**



## 105 ZWT SUMMITT 2160

Birth Date: 03-22-2022 Bull 20447218 Tattoo: 2160

#\*S A V Renown 3439 +Rito 707 of Ideal 3407 7075  
 +\*ZWT Summitt 6507 \*S A V Blackcap May 4136  
 18561289 +\*Coleman Donna 714 #\*Connealy Onward  
 +\*Coleman Donna 386  
 #\*S A V 707 Rito 9969 +Rito 707 of Ideal 3407 7075  
 +ZWT Pride 3504 BR Polly 8077-472  
 17873285 Thomas Pride 3644 #Rito 616 of 4B20 6807  
 Thomas Pride 1175

CED	BW	WW	YW	SC	Milk	MB	RE	\$M	\$W
+7	+5	+55	+100	+47	+21	+16	+50	+65	+48

This son of the \$45,000 ST Genetics proven sire ZWT Summitt 6507 has an individual birth ratio of 90 combined with an individual weaning ratio of 103 and an individual ribeye ratio of 103.

The dam combines a progeny birth ratio of 95 with a progeny weaning ratio of 103 on two calves, and she is a product of the embryo program by the Accelerated Genetics Pathfinder Sire SAV 707 Rito 9969.

**Birth weight 74 pounds, 205-day weight 652.**

## 106 ZWT REAL PRIDE 2333 [NHF]

Birth Date: 04-21-2022 Bull \*20495835 Tattoo: 2333

#\*S A V Resource 1441 +Rito 707 of Ideal 3407 7075  
 +\*S A V Real Pride 4475 \*S A V Blackcap May 4136  
 17923531 S A V Madame Pride 0075 #\*S A F 598 Bando 5175  
 S A V Madame Pride 8264  
 #\*S A V Harvester 0338  
 #\*S A V Emblynette 3301  
 #\*S A V Iron Mountain 8066  
 #Foxhoven's Dam 703

CED	BW	WW	YW	SC	Milk	MB	RE	\$M	\$W
+6	+1.5	+64	+110	N/A	+19	+33	+55	+52	+51

This son of SAV Real Pride 4475 has an individual birth ratio of 91 combined with an individual weaning ratio of 103 along with an individual IMF ratio of 105.

The dam records a progeny birth ratio of 96 combined with a progeny weaning ratio of 102 on two calves, from the most noted cow family produced in the Foxhoven herd in Nebraska.

**Birth weight 72 pounds, 205-day weight 684.**

## 107 ZWT RITO 2168

Birth Date: 03-22-2022 Bull 20447215 Tattoo: 2168

+Rito 707 of Ideal 3407 7075 #R R Rito 707  
 +\*Reisig Rito 7075 634 Ideal 3407 of 1418 076  
 18664771 \*Buford Elba 9000 #\*S A V Bismarck 5682  
 #\*S A V Elba 4436  
 #\*S A V 707 Rito 9969  
 +Bardolia of Peak Dot 908T  
 #\*S A V Bismarck 5682  
 +S A V Emblynette 7993

CED	BW	WW	YW	SC	Milk	MB	RE	\$M	\$W
+7	+5	+53	+88	N/A	+20	+04	+34	+68	+47

This grandson of the great breeding bull Rito 707 of Ideal 3407 7075 has an individual birth ratio of 91 combined with an individual weaning ratio of 106 and an individual IMF ratio of 116.

This bull is double-bred to the Pathfinder Sire SAV Bismarck 5682, from the Emblynette family.  
**Birth weight 75 pounds, 205-day weight 672.**

## 108 ZWT FINAL ANSWER 2100

Birth Date: 03-14-2022 Bull 20534255 Tattoo: 2100

#Sitz Traveler 8180 #G D A R Traveler 71  
 #\*S A V Final Answer 0035 Sitz Everelda Entense 1137  
 13592905 S A V Emulous 8145 #Bon View Bando 598  
 S A V Sky Emulous 2124  
 #\*S A V Harvester 0338  
 +S A V Emblynette 3301  
 #\*O C C Emblazon 854E  
 O C C Juanada 709Z

CED	BW	WW	YW	SC	Milk	MB	RE	\$M	\$W
+9	+9	+54	+91	+95	+22	+33	+36	+65	+52

A grandson of the famous OCC Juanada 741K by the Genex Pathfinder Sire SAV Final Answer 0035, who led the breed for annual registrations.

This bull records an individual ribeye ratio of 116 from a dam who balances a progeny birth ratio of 97 with a progeny weaning ratio of 102 along with progeny IMF and ribeye ratios of 103 and 108, respectively, on two calves.

**Birth weight 77 pounds, 205-day weight 568.**

## 109 ZWT ENGAGE 2248

Birth Date: 04-04-2022 Bull 20464766 Tattoo: 2248

+\*S A V Elation 7899 #\*Sinclair Emulation XXP  
 +\*S A V Engage 0859 \*S A V Blackcap May 1782  
 19853780 #\*S A V Blackcap May 1808 #S A V Net Worth 4200  
 #\*S A V May 2397  
 #S A V 8180 Traveler 004  
 S A V May 7238  
 #\*S A V Bismarck 5682  
 #\*S A V Elba 4436

CED	BW	WW	YW	SC	Milk	MB	RE	\$M	\$W
+5	+3.0	+65	+112	+53	+27	+25	+44	+55	+54

A member of the powerful first calf crop by the \$54,000 ZWT featured sire SAV Engage 0859.

The dam is a maternal sister to the Genex sire Buford Pathfinder C304.

**Birth weight 79 pounds.**

## 110 ZWT COMMERCIAL 2380

Birth Date: 3-15-2022 Bull Tattoo: 2380

**Birth weight 85 pounds.**

## 111 ZWT COMMERCIAL 2343

Birth Date: 4-28-2022 Bull Tattoo: 2343

Sire: Brooking Gold Coin 8069



**ZWT Tahoe 2153 - Lot 112**

## 112 ZWT TAHOE 2153

Birth Date: 03-20-2022 Bull +\*20447219 Tattoo: 2153

\*Tehama Upward Y238 #\*Sitz Upward 307R  
 #\*+Tehama Tahoe B767 +Tehama Elite Blackbird T735  
 17817177 +\*Tehama Mary Blackbird Y684 #\*S A V Final Answer 0035  
 Tehama Mary Blackbird T073  
 #\*+Basin Payweight 1682 #\*+Basin Payweight 0065  
 #Rathbun Ruby Erica E617 21AR O Lass 7017  
 19298853 +\*Rathbun Ruby Erica B927 #\*Connealy In Focus 4925  
 #Rathbun Ruby Erica W638

CED	BW	WW	YW	SC	Milk	MB	RE	\$M	\$W
+8	-1.2	+86	+139	+1.13	+32	+82	+77	+85	+88

A flush brother to Lot 63 and 113 from an embryo mating backed by the Select Sires Pathfinder Sire Tehama Tahoe B767 and the ABS Global Pathfinder Sire Basin Payweight 1682.

The dam sold to Valley Oaks of Missouri in the 2022 ZWT Sale.

This bull balances an individual birth ratio of 83 with an individual weaning ratio of 117 along with individual IMF and ribeye ratios of 143 and 106, respectively.

**Birth weight 72 pounds, 205-day weight 779.**

## 113 ZWT TAHOE 2012

Birth Date: 01-19-2022 Bull Reg.No.Pdg. Tattoo: 2012

\*Tehama Upward Y238 #\*Sitz Upward 307R  
 Tehama Tahoe B767 [AMF-DIA-DZF-DZF-MF-NHF-DHF-DZF-ROF] +Tehama Elite Blackbird T735  
 17817177 +\*Tehama Mary Blackbird Y684 #\*S A V Final Answer 0035  
 Tehama Mary Blackbird T073  
 #\*+Basin Payweight 1682 #\*+Basin Payweight 0065  
 Rathbun Ruby Erica E617 21AR O Lass 7017  
 19298853 +\*Rathbun Ruby Erica B927 #\*Connealy In Focus 4925  
 #Rathbun Ruby Erica W638

CED	BW	WW	YW	SC	Milk	MB	RE	\$M	\$W
+6	+7	+77	+132	+07	+30	-30	+73	+85	+77
+4	+2.1	+72	+129	+1.38	+28	+27	+57	+53	+66

A flush brother to Lots 63 and 112 from an embryo mating by the Select Sires Pathfinder Sire Tehama Tahoe B767 with the ZWT foundation donor Rathbun Ruby Erica E617 who sold as a \$12,000 highlight of the 2022 ZWT Sale to Valley Oaks of Missouri.

The third dam is a Pathfinder Dam.





**ZWT Weigh Up 2058 – Lot 114**

## 114 ZWT WEIGH UP 2058

Birth Date: 03-02-2022	Bull *20464756	Tattoo: 2058
#*Plattemere Weigh Up K360		
J&J Weigh Up 294	#*Sitz Upward 307R	
18004546 J & J Miss Georgina 294	#Barbara of Plattemere 337	
	#TC Romeo 917	
	J&J Miss Georgina 927	
	*+*Sinclair Emulation XXP	
	*+*Coleman Donna 386	
	*+*S A V Sensation 5615	
	+S A V Elba 171	
+*ZWT Emulation 6143		
ZWT Elba 9567		
20119950 ZWT Elba 7246		

CED	BW	WW	YW	SC	Milk	MB	RE	\$M	\$W
+4	+1.6	+67	+123	N/A	+29	+50	+49	+58	+58

A son of the ZWT proven sire J&J Weigh Up 294 with an individual weaning ratio of 103 combined with an individual yearling ratio of 108.

This well-balanced prospect was produced from a dam by ZWT Emulation 6143, stemming from the \$75,000 SAV Elba 171.

**Birth weight 76 pounds, 205-day weight 597.**

## 115 ZWT WEIGH UP 2071

Birth Date: 03-07-2022	Bull *20464759	Tattoo: 2071
#Plattemere Weigh Up K360		
J&J Weigh Up 294	#Sitz Upward 307R	
18004546 J & J Miss Georgina 294	#Barbara of Plattemere 337	
	#TC Romeo 917	
	J&J Miss Georgina 927	
	*S A V International 2020	
	*Soo Line Rose 1019	
	*S A V Potential 0205	
	+ZWT Georgina 9025	
	+*Brooking Major 7103	
ZWT Georgina 0279		
20118080 +ZWT Georgina 5163		

CED	BW	WW	YW	SC	Milk	MB	RE	\$M	\$W
+3	+2.5	+61	+111	N/A	+28	+52	+50	+68	+51

A blending of the ZWT featured sires J&J Payweight 294 and Brooking Major 7103.

This bull is from the family descending from the ZWT foundation donor WK Georgina 9375.

**Birth weight 78 pounds, 205-day weight 556.**

## 116 ZWT MARVEL 2111

Birth Date: 03-15-2022	Bull 20447242	Tattoo: 2111
*+*PVF Insight 0129		
*Lafins Marvel 1801	#S A V Brilliance 8077	
19091613 Lafins Galaxie 3332	+*PVF Missie 790	
	+EXAR Consensus 1972B	
	Lafins Galaxie 1241	
	#S A V Harvester 0338	
	+S A V Emblynette 3301	
	#R R Rito 707	
	+Ideal 4465 of 6807 4286	

CED	BW	WW	YW	SC	Milk	MB	RE	\$M	\$W
+3	+2.6	+52	+92	N/A	+20	+07	+1.05	+64	+39

A grandson of the ZWT foundation Pathfinder Dam Sinclair Lady 3R2 4465.

This son of the successful champion and ZWT featured sire Lafins Marvel 1801 records an individual ribeye ratio of 120 from a dam by SAV Hesston 2217.

**Birth weight 82 pounds, 205-day weight 651.**

## 117 ZWT MARVEL 2080

Birth Date: 03-11-2022	Bull +*20743273	Tattoo: 2080
*+*PVF Insight 0129		
*Lafins Marvel 1801	#S A V Brilliance 8077	
19091613 Lafins Galaxie 3332	+*PVF Missie 790	
	+EXAR Consensus 1972B	
	Lafins Galaxie 1241	
	#Emulation N Bar 5522	
	N Bar Primrose 2424	
	#O C C Anchor 771A	
	O C C Juanada 709Z	

CED	BW	WW	YW	SC	Milk	MB	RE	\$M	\$W
+8	+9	+44	+75	+29	+20	+09	+76	+75	+45

A son of the ZWT featured sire Lafins Marvel 1801 with an individual IMF ratio of 106 from a donor dam who combines a progeny birth ratio of 96 with a progeny weaning ratio of 102 on five calves.

The grandam is from an embryo mating double-bred to the Juanada family by the Pathfinder Sire OCC Anchor 771A.

**Birth weight 78 pounds, 205-day weight 560.**



**ZWT Weigh Up 2071 – Lot 115**



**ZWT Novelty 2043 – Lot 118**

## 118 ZWT NOVELTY 2043

Birth Date: 02-25-2022	Bull 20447298	Tattoo: 2043
*+*PVF Insight 0129		
*Lafins Marvel 1801	#S A V Brilliance 8077	
19091613 Lafins Galaxie 3332	+*PVF Missie 790	
	+EXAR Consensus 1972B	
	Lafins Galaxie 1241	
	#O C C Headliner 661H	
	+*O C C Dixie Erica 946K	
	#Sinclair Extra 4X13	
	+Miss Wix 7111 of Mc Cumber	

CED	BW	WW	YW	SC	Milk	MB	RE	\$M	\$W
+6	+1.2	+59	+103	N/A	+21	+11	+78	+63	+50

A top-indexing son of Lafins Marvel 1801 with an outstanding individual weaning ratio of 116 along with individual IMF and ribeye ratios of 103 and 101, respectively.

The dam was selected as the top-selling female of a past Mc Cumber Sale, and she records a progeny weaning ratio of 101 on five natural calves.

**Birth weight 81 pounds, 205-day weight 661.**

## 119 ZWT MARVEL 2107

Birth Date: 03-14-2022	Bull *20447231	Tattoo: 2107
*+*PVF Insight 0129		
*Lafins Marvel 1801	#S A V Brilliance 8077	
19091613 Lafins Galaxie 3332	+*PVF Missie 790	
	+EXAR Consensus 1972B	
	Lafins Galaxie 1241	
	#Emulation N Bar 5522	
	N Bar Primrose 2424	
	#Basin Rainmaker 654X	
	+KMK Donna J311	

CED	BW	WW	YW	SC	Milk	MB	RE	\$M	\$W
+7	+9	+54	+97	+05	+20	+07	+91	+66	+47

This son of Lafins Marvel 1801 records an individual birth ratio of 95 combined with an individual weaning ratio of 103 and an individual ribeye ratio of 113.

The dam is a product of the embryo program stemming from the \$200,000 valued Coleman Donna 386.

A maternal sister records a progeny weaning ratio of 106 on her first two calves.

**Birth weight 75 pounds, 205-day weight 682.**





**ZWT Gold Coin 2320 – Lot 120**

**120 ZWT GOLD COIN 2320**  
Birth Date: 04-18-2022 Bull \*20447302 Tattoo: 2320

\*Brooking Bank Note 4040 #+\*Connealy Earnan 076E  
+\*Brooking Gold Coin 8069 \*E A Rose 918  
19377658 S A V Emblynnette 4223 #\*S A V Harvester 0338  
+S A V Emblynnette 1786  
+\*S A V Revolution 4846 \*S A V Revere 1180  
**ZWT Lady 7800** \*S A V Blackcap May 4136  
19687483 +ZWT Lady 3061 \*Duff Angus 011  
+ZWT 0478 Ideal 1078

CED	BW	WW	YW	SC	Milk	MB	RE	\$M	\$W
+2	+2.5	+60	+97	N/A	+22	+40	+38	+55	+51

An opportunity to select among sons of the Brooking featured sire Brooking Gold Coin 8069.

This bull records an impressive individual weaning ratio of 110 along with individual IMF and ribeye ratios of 128 and 107, respectively, from a dam with a progeny weaning ratio of 109 and a progeny IMF ratio of 116 on two head.

**Birth weight 86 pounds, 205-day weight 617.**

**121 ZWT GOLD COIN 2335**  
Birth Date: 04-22-2022 Bull \*20718198 Tattoo: 2335

\*Brooking Bank Note 4040 #+\*Connealy Earnan 076E  
+\*Brooking Gold Coin 8069 \*E A Rose 918  
19377658 S A V Emblynnette 4223 #\*S A V Harvester 0338  
+S A V Emblynnette 1786  
#\*S A V 707 Rito 9969 +Rito 707 of Ideal 3407 7075  
+\*ZWT Beauty 4207 BR Polly 8077-472  
17911941 TLA Beauty 5R RR 7407 Rainmaker 2154  
Terlene Beauty 35F

CED	BW	WW	YW	SC	Milk	MB	RE	\$M	\$W
+2	+1.8	+66	+112	N/A	+20	+39	+35	+47	+53

This son of Brooking Gold Coin 8069 has an individual birth ratio of 89 combined with an individual weaning ratio of 118 and an individual IMF ratio of 120.

The dam records a progeny birth ratio of 95 combined with a progeny weaning ratio of 105 on three calves, and she is a maternal sister to the \$55,000 Pathfinder Sire Soo Line Motive 9016.

**Birth weight 73 pounds, 205-day weight 742.**

**122 ZWT GOLD COIN 2268 [DDP]**  
Birth Date: 04-08-2022 Bull 20447208 Tattoo: 2268

\*Brooking Bank Note 4040 #+\*Connealy Earnan 076E  
+\*Brooking Gold Coin 8069 \*E A Rose 918  
19377658 S A V Emblynnette 4223 #\*S A V Harvester 0338  
+S A V Emblynnette 1786  
#Sitz Traveler 8180  
#S A V 8180 Traveler 004 +Boyd Forever Lady 8003  
**SandPoint Blackbird 6006** #Rockn D Ambush 1531  
15448110 +Davis Blackbird 632 G A R Traveler 1080

CED	BW	WW	YW	SC	Milk	MB	RE	\$M	\$W
+5	+2.1	+68	+111	N/A	+19	+34	+32	+56	+54

A top-performing son of Brooking Gold Coin 8069 with an individual birth ratio of 91 combined with an individual weaning ratio of 103.

The proven dam has a progeny birth ratio of 94 combined with a progeny weaning ratio of 105 on three calves, from the same cow family as the record-selling Davis WR Blackbird 555H.

**Birth weight 74 pounds, 205-day weight 755.**

**123 ZWT GOLD COIN 2205**  
Birth Date: 03-27-2022 Bull 20718201 Tattoo: 2205

\*Brooking Bank Note 4040 #+\*Connealy Earnan 076E  
+\*Brooking Gold Coin 8069 \*E A Rose 918  
19377658 S A V Emblynnette 4223 #\*S A V Harvester 0338  
+S A V Emblynnette 1786  
+\*S A V Resource 1441  
+\*S A V Real Pride 4475 S A V Madame Pride 0075  
**ZWT Donna 6523** #HF Prowler 43U  
18556158 +ZWT Donna 3120 \*Coleman Donna 386

CED	BW	WW	YW	SC	Milk	MB	RE	\$M	\$W
+5	+2.0	+65	+112	N/A	+20	+31	+53	+66	+51

A blending of famous families sired by Brooking Gold Coin 8069.

This bull has an individual weaning ratio of 111 along with individual IMF and ribeye ratios of 115 and 104, respectively, from a dam with a progeny weaning ratio of 106 on two calves.

**Birth weight 82 pounds, 205-day weight 699.**



**ZWT Gold Coin 2205 – Lot 123**



**ZWT Gold Coin 2288 – Lot 124**

**124 ZWT GOLD COIN 2288 [M1P]**  
Birth Date: 04-13-2022 Bull 20451140 Tattoo: 2288

\*Brooking Bank Note 4040 #+\*Connealy Earnan 076E  
+\*Brooking Gold Coin 8069 \*E A Rose 918  
19377658 S A V Emblynnette 4223 #\*S A V Harvester 0338  
+S A V Emblynnette 1786  
+\*ZWT Cargo 5066 #+\*S A V Renown 3439  
**ZWT Lucy 8074** O C C Primrose 932L  
19275277 ZWT Lucy 6104 +\*S A V Real Pride 4475  
ZWT Lucy 2655

CED	BW	WW	YW	SC	Milk	MB	RE	\$M	\$W
+2	+2.4	+58	+98	N/A	+21	+22	+46	+73	+47

A son of Brooking Gold Coin 8069 with an individual weaning ratio of 108 along with individual IMF and ribeye ratios of 111 and 106, respectively.

The dam records a progeny weaning ratio of 103 on three calves and a progeny yearling ratio of 105 on one head.

**Birth weight 84 pounds, 205-day weight 602.**

**125 ZWT GOLD COIN 2304 [M1F]**  
Birth Date: 04-13-2022 Bull \*20451137 Tattoo: 2304

\*Brooking Bank Note 4040 #+\*Connealy Earnan 076E  
+\*Brooking Gold Coin 8069 \*E A Rose 918  
19377658 S A V Emblynnette 4223 #\*S A V Harvester 0338  
+S A V Emblynnette 1786  
+\*Ashmore/Camp Resource C06 #+\*S A V Resource 1441  
**ZWT Blackcap F099** +\*Buford Elba 811Y  
19430780 ZWT Blackcap 4463 +\*ZWT The Judge 1011  
ZWT Blackcap 2259

CED	BW	WW	YW	SC	Milk	MB	RE	\$M	\$W
+2	+3.6	+57	+101	N/A	+19	+21	+52	+64	+38

This son of Brooking Gold Coin 8069 records an individual IMF ratio of 107 along with an individual ribeye ratio of 112.

The dam is sired by a full brother to the Genex sire Buford Pathfinder C304.

**Birth weight 88 pounds, 205-day weight 535.**





**ZWT Mainstay 2226 – Lot 126**

## 126 ZWT MAINSTAY 2226

Birth Date: 03-30-2022 Bull \*20447209 Tattoo: 2226

\*Connealy Mainstay  
**Musgrave Mainstay 2059**  
19827655 SA Edwina Erica 567-313

+\*S A V Stallion 2413  
**ZWT Dixie Erica F401**  
19429852 +ZWT Dixie Erica 2079

\*Connealy Glory 4127  
Jayce of Conanga 318E  
\*\*Musgrave Aviator  
BDM Edwina Erica 313  
#S A V Mustang 9134  
\*S A V Madame Pride 5290  
+\*Duff Encore 702  
+\*ZWT Dixie Erica 9658

CED	BW	WW	YW	SC	Milk	MB	RE	\$M	\$W
+3	+2.8	+82	+134	N/A	+28	+43	+62	+78	+69

This high-performance herd sire prospect records an impressive individual weaning ratio of 135 along with individual IMF and ribeye ratios of 102 and 107, respectively.

This bull is from the first calf from by the ZWT featured sire Musgrave Mainstay 2059 from a dam by the ZWT proven sire SAV Stallion 2413.

**Birth weight 81 pounds, 205-day weight 855.**

## 127 ZWT MAINSTAY 2331

Birth Date: 04-21-2022 Bull 20464785 Tattoo: 2331

\*Connealy Mainstay  
**Musgrave Mainstay 2059**  
19827655 SA Edwina Erica 567-313

##\*S A V Raindance 6848  
**Siebring Blackcap May 1909**  
19492560 \*Siebring Blackcap May 473

\*Connealy Glory 4127  
Jayce of Conanga 318E  
\*\*Musgrave Aviator  
BDM Edwina Erica 313  
##\*Coleman Charlo 0256  
\*S A V Blackcap May 4136  
#\*S A V Final Answer 0035  
+\*S A V Blackcap May 273

CED	BW	WW	YW	SC	Milk	MB	RE	\$M	\$W
+4	+3.2	+77	+135	N/A	+29	+50	+59	+57	+62

This bull by Musgrave Mainstay 2059 has an individual birth ratio of 89 along with individual IMF and ribeye ratios of 109 and 105, respectively, from a dam by the ST Genetics Pathfinder Sire SAV Raindance 6848.

The grandam was selected by ZWT as the all-time record-selling Siebring female.

**Birth weight 65 pounds, 205-day weight 641.**

## 128 ZWT MAINSTAY 2373

Birth Date: 03-01-2022 Bull 20718196 Tattoo: 2373

\*Connealy Mainstay  
**Musgrave Mainstay 2059**  
19827655 SA Edwina Erica 567-313

+\*DBL Day Break 501

**ZWT Donna F594**  
19627788 ZWT Donna 3384

\*Connealy Glory 4127  
Jayce of Conanga 318E  
\*\*Musgrave Aviator  
BDM Edwina Erica 313  
+\*S A V Hesston 2217  
\*S A V Elba 2037  
O C C Workhorse 895W  
+ZWT Donna 1123

CED	BW	WW	YW	SC	Milk	MB	RE	\$M	\$W
+1	+3.7	+77	+130	N/A	+26	+1.27	+1.37	N/A	+60

An impressive bull from the first calf crop by the ZWT featured sire Musgrave Mainstay 2059.

The dam records a progeny weaning ratio of 109 on two calves, backed by the Donna family.

**Birth weight 87 pounds, 205-day weight 518.**

## 129 ZWT MAINSTAY 2177

Birth Date: 03-23-2022 Bull 20464786 Tattoo: 2177

\*Connealy Mainstay  
**Musgrave Mainstay 2059**  
19827655 SA Edwina Erica 567-313

+\*S A V Receptor 4837

**ZWT Merle F455**  
19629498 ZWT Merle 9070

\*Connealy Glory 4127  
Jayce of Conanga 318E  
\*\*Musgrave Aviator  
BDM Edwina Erica 313  
##\*S A V Registry 2831  
\*S A V Blackcap May 4136  
+\*Duff Encore 702  
+Greenwood Merle R626

CED	BW	WW	YW	SC	Milk	MB	RE	\$M	\$W
-3	+5.2	+80	+134	N/A	+25	+42	+57	+68	+56

This bull records an individual weaning ratio of 109 along with individual IMF and ribeye ratios of 123 and 102, respectively.

The dam of this bull is sired by a full brother to both SAV Seedstock 4838 and SAV Sensation 5615.

**Birth weight 91 pounds, 205-day weight 721.**



**ZWT Mainstay 2331 – Lot 127**



**ZWT Mainstay 2373 – Lot 128**

## 130 ZWT INTERVENTION 2194 [M1P]

Birth Date: 03-25-2022 Bull 20447230 Tattoo: 2194

+\*S A V Impact 5595  
**+\*ZWT Intervention 7363**  
18987241 \*E A Rose 918

+\*ZWT The Judge 1011

**ZWT Dixie Erica 4860**  
18171731 +ZWT Dixie Erica 2102

\*S A V International 2020  
+S A V Emblynnette 3301  
#\*S A V Final Answer 0035  
E A Rose 738  
+\*Duff Jetset 7122  
+Sitz Everelda Entense 2198  
+\*Duff Stimulus 856  
+\*ZWT Dixie Erica 9658

CED	BW	WW	YW	SC	Milk	MB	RE	\$M	\$W
+7	+1.0	+52	+87	N/A	+29	+0.4	+46	+72	+53

An attractive calving-ease prospect with an individual birth ratio of 98 combined with an individual weaning ratio of 111 and an individual ribeye ratio of 106, from a dam with a progeny weaning ratio of 103 on three calves.

This bull is sired by the \$42,500 ZWT Intervention 7363.

**Birth weight 80 pounds, 205-day weight 698.**

## 131 ZWT INTERVENTION 2237

Birth Date: 04-01-2022 Bull 20447299 Tattoo: 2237

+\*S A V Impact 5595  
**+\*ZWT Intervention 7363**  
18987241 \*E A Rose 918

##\*S A V Final Answer 0035

**ZWT Dixie Erica 5118**  
18212990 +\*ZWT Dixie Erica 3011

\*S A V International 2020  
+S A V Emblynnette 3301  
#\*S A V Final Answer 0035  
E A Rose 738  
#Sitz Traveler 8180  
S A V Emulous 8145  
+\*Boss Hoss 8132  
+\*O C C Dixie Erica 805G

CED	BW	WW	YW	SC	Milk	MB	RE	\$M	\$W
+10	-3	+56	+92	N/A	+28	+1.7	+26	+77	+58

A son of ZWT Intervention 7363 with an individual birth ratio of 98 combined with an individual weaning ratio of 108.

The dam is by the Genex Pathfinder Sire SAV Final Answer 0053, tracing to the highly-regarded ZWT foundation female OOC Dixie Erica 805G.

**Birth weight 73 pounds, 205-day weight 602.**



## 132 ZWT INFUSION 2078

Birth Date: 03-08-2022	Bull *20447226	Tattoo: 2078
*ZWT Chaperone 4030	*S A V Birthstone 8258	
+*ZWT Infusion F182	+SIEBRING Elba 247	
19382109 *E A Rose 918	#*S A V Final Answer 0035	
	E A Rose 738	
	*S A V First Class 0207	
+*S A V First Prize 3642	+S A V Emblynette 3301	
ZWT Donna 8204	#*S A V Final Answer 0035	
19297996 +ZWT Donna 3031	+*Coleman Donna 714	

CED	BW	WW	YW	SC	Milk	MB	RE	\$M	\$W
+7	+1.0	+59	+99	N/A	+29	+40	+69	+73	+58

This son of the featured sire ZWT Infusion F182 has an individual birth ratio of 99 combined with an individual weaning ratio of 104 and an individual ribeye ratio of 109. The dam records a progeny weaning ratio of 104 on two calves, stemming from the high-income-producing Coleman Donna 714.

**Birth weight 77 pounds, 205-day weight 690.**

## 133 ZWT INFUSION 2083

Birth Date: 03-11-2022	Bull 20718449	Tattoo: 2083
*ZWT Chaperone 4030	*S A V Birthstone 8258	
+*ZWT Infusion F182	+SIEBRING Elba 247	
19382109 *E A Rose 918	#*S A V Final Answer 0035	
	E A Rose 738	
	#*S A V Iron Mountain 8066	
+*S A V Angus Valley 1867	#*S A V May 2397	
+*Champion Hill Georgina 8353	#*S A V Bismarck 5682	
17558129 *Champion Hill Georgina 72561	+Champion Hill Georgina 4402	

CED	BW	WW	YW	SC	Milk	MB	RE	\$M	\$W
+6	+1.2	+53	+96	+47	+28	+56	+68	+49	+50

This son of ZWT Infusion F186 was produced as a natural calf from the ZWT foundation donor Champion Hill Georgina 8353.

The grandam is a past All-American Grand Champion Female.

**Birth weight 74 pounds, 205-day weight 480.**

## 134 ZWT INFUSION 2103

Birth Date: 03-14-2022	Bull *20447285	Tattoo: 2103
*ZWT Chaperone 4030	*S A V Birthstone 8258	
+*ZWT Infusion F182	+SIEBRING Elba 247	
19382109 *E A Rose 918	#*S A V Final Answer 0035	
	E A Rose 738	
	#*S A V Harvester 0338	
+*S A V Hesston 2217	+S A V Emblynette 3301	
*ZWT Lady 8213	#*Coleman Regis 904	
19298005 +*ZWT Lady 2676	#*Sinclair Lady 3M19 4465	

CED	BW	WW	YW	SC	Milk	MB	RE	\$M	\$W
+5	+1.5	+62	+102	N/A	+27	+35	+70	+69	+59

This son of ZWT Infusion F182 has an individual birth ratio of 95 balanced with an individual weaning ratio of 105 and an individual ribeye ratio of 108.

This bull traces to the ZWT foundation Pathfinder Dam Sinclair Lady 3M19 4465.

**Birth weight 74 pounds, 205-day weight 599.**

## 135 ZWT INFUSION 2116

Birth Date: 03-17-2022	Bull *20447223	Tattoo: 2116
*ZWT Chaperone 4030	*S A V Birthstone 8258	
+*ZWT Infusion F182	+SIEBRING Elba 247	
19382109 *E A Rose 918	#*S A V Final Answer 0035	
	E A Rose 738	
	+Rito 707 of Ideal 3407 7075	
+*S A V 707 Rito 9969	BR Polly 8077-472	
+*ZWT Beauty 4209	RR 7407 Rainmaker 2154	
17911942 TLA Beauty 5R	Terlene Beauty 35F	

CED	BW	WW	YW	SC	Milk	MB	RE	\$M	\$W
+1	+2.0	+54	+96	N/A	+26	+49	+60	+44	+48

This bull has an individual birth ratio of 97 combined with an individual IMF ratio of 132, sired by ZWT Infusion F182. The dam is a maternal sister to Soo Line Motive 9016, sired by SAV 707 Rito 9969.

**Birth weight 77 pounds, 205-day weight 661.**

## 136 ZWT INFUSION 2217 [M1P]

Birth Date: 03-29-2022	Bull 20447212	Tattoo: 2217
*ZWT Chaperone 4030	*S A V Birthstone 8258	
+*ZWT Infusion F182	+SIEBRING Elba 247	
19382109 *E A Rose 918	#*S A V Final Answer 0035	
	E A Rose 738	
	+*Duff Jetset 7122	
+*ZWT The Judge 1011	+Sitz Everelda Entense 2198	
ZWT Merle 4473	+*Duff Encore 702	
17912095 +ZWT Merle 2239	C M Merle 744L	

CED	BW	WW	YW	SC	Milk	MB	RE	\$M	\$W
+5	+2.7	+53	+95	+49	+25	+27	+45	+49	+47

A son of ZWT Infusion F182 with an individual weaning ratio of 111.

The dam records a progeny weaning ratio of 106 on two calves.

The grandam is a product of the embryo program.

**Birth weight 87 pounds, 205-day weight 699.**



**Duff Martial Law 593E 22134 – Lot 139**

## 137 ZWT MONSIEUR 2324

Birth Date: 04-19-2022	Bull 20447284	Tattoo: 2324
*S A V President 6847	#*Coleman Charlo 0256	
+*S A V Monsieur 9582	*S A V Blackcap May 4136	
19543487 +S A V Elba 2536	#*S A V 707 Rito 9969	
	S A V Elba 1094	
	#S A V Mustang 9134	
+*S A V Stallion 2413	*S A V Madame Pride 5290	
ZWT Donna 4081	+*Duff Stimulus 856	
17911848 +ZWT Donna 1121	+Coleman Donna 7173	

CED	BW	WW	YW	SC	Milk	MB	RE	\$M	\$W
+1	+3.4	+62	+107	N/A	+29	+18	+36	+61	+52

This high-performing bull records an outstanding individual weaning ratio of 119.

This bull is backed by two generations of ZWT herd sires produced in the SAV program, from a dam with a progeny weaning ratio of 113 on two calves and a progeny IMF ratio of 117 on two head.

**Birth weight 87 pounds, 205-day weight 667.**

## 138 ZWT MONSIEUR 2374

Birth Date: 03-19-2022	Bull 20741816	Tattoo: 2374
*S A V President 6847	#*Coleman Charlo 0256	
+*S A V Monsieur 9582	*S A V Blackcap May 4136	
19543487 +S A V Elba 2536	#*S A V 707 Rito 9969	
	S A V Elba 1094	
	#*S A V Renown 3439	
+*ZWT Cargo 5066	O C C Primrose 932L	
ZWT Lady 8070	+*ZWT Haymaker 3582	
19275274 ZWT Lady 5928	+Sinclair Lady 2ZL1 4510	

CED	BW	WW	YW	SC	Milk	MB	RE	\$M	\$W
+2	+2.3	+51	+88	N/A	+28	+03	+38	+76	+47

This bull combines an individual birth ratio of 96 with an individual weaning ratio of 102 and an individual IMF ratio of 124.

This bull traces to a powerful third dam who served as a ZWT foundation donor.

**Birth weight 81 pounds, 205-day weight 626.**

## 139 DUFF MARTIAL LAW 593E 22134 [M1P]

Birth Date: 02-14-2022	Bull 20405090	Tattoo: 22134
#*Coleman Charlo 0256	#*O C C Paxton 730P	
+*Blair's Martial Law 593E	+Bohi Abigale 6014	
19394635 Bar-E-L Erica 74A	Bar-E-L Natural Law 52Y	
	HF Erica 339T	
	+Bar Wick Eureka 943 310	
+*Duff Honcho 426	*Duff BI 619 LadyPop 1017	
Duff Dixie Erica 244 1729	O C C Prototype 847P	
19211212 +Duff Blackcap 651 244	*Duff NL 753L Blackcap 651	

CED	BW	WW	YW	SC	Milk	MB	RE	\$M	\$W
+3	+1.3	+49	+78	+91	+25	+28	+25	+62	+53

A son of Blair's Martial Law 593E produced in the Duff herd in Oklahoma from a dam by Duff Honcho 426.

This bull is a descendent of OCC Blackcap 753L.

**Birth weight 74 pounds, 205-day weight 642.**





**ZWT Global 2549 – Lot 140**

**PVA Blackcap May 4397**  
– Dam of Lots 15, 15A, 87  
and 140.



**ZWT Mystic 2508 – Lot 141**

**Soo Line Rose 1019 –**  
Dam of Lots 3 and 141.

140 ZWT GLOBAL 2549		Birth Date: 09-07-2022	Bull +*20729947	Tattoo: 2549
+*S A V Renown 3439		+Rito 707 of Ideal 3407 7075		
+*Coleman Glacier 041		*S A V Blackcap May 4136		
19866409		#+GDAR Game Day 449		
+*Coleman Donna 439		+*Coleman Donna 714		
+*S A V International 2020		#*S A V Harvester 0338		
+*PVA Blackcap May 4397		#*S A V Emblynette 5483		
17884732		#+S A F 598 Bando 5175		
+*S A V May 2397		S A V May 7238		

CED	BW	WW	YW	SC	Milk	MB	RE	\$M	\$W
I+5	I+2.0	I+68	I+118	I+28	I+28	I-17	I+65	+65	+65

This promising fall yearling herd sire prospect is a flush brother to Lot 15A from the mating of the \$270,000 Coleman Glacier 041 with the ZWT foundation donor PVA Blackcap May 4397, who sold one-half interest for \$20,000 as the featured Lot 1 cow of the 2022 ZWT Sale to Montana Ranch.

A maternal sister is featured as Lot 15, and a maternal brother is featured as Lot 87.

The dam records a progeny weaning ratio of 108 on two natural calves and a progeny yearling ratio of 106 on one head along with progeny IMF and ribeye ratios of 107 and 103, respectively, on five head with three daughters in production who post a collective progeny weaning ratio of 103.

As a heifer, the dam of this bull sold one-half interest for \$50,000 for a \$100,000 valuation as the top-selling bred heifer of the 2015 Pasture View Sale, and she was later acquired in her entirety as the featured Lot 1 female of the Pasture View Dispersal.

**Birth weight 82 pounds, 205-day weight 632.**

141 ZWT MYSTIC 2508		Birth Date: 08-15-2022	Bull +*20700205	Tattoo: 2508
+*Panther Cr Incredible 6704		Musgrave Invision		
KR Mojo 8520		*Panther Cr JH Blackbird 409		
19219146		+*Kramers Apollo 317		
+*Soo Line Motive 9016		#KR Princess 4386		
+*Soo Line Rose 1019		HF Kodiak 5R		
19105893		TLA Beauty 5R		
+*E A Rose 918		+*S A V Final Answer 0035		
		E A Rose 738		

CED	BW	WW	YW	SC	Milk	MB	RE	\$M	\$W
I+9	I+2	I+61	I+112	I+27	I+28	I+42	I+69	+69	+63

A flush brother to the heifer featured as Lot 3 sired by the \$42,500 KR Mojo 8520 from the noted Soo Line Rose 1019, stemming from the \$100,000 valued ZWT foundation female EA Rose 918.

This bull is a maternal brother to the \$80,000 ZWT herd sire Brooking Major 7013.

The dam is a maternal sister to Brooking Bank Note 4040, ZWT Infusion F182, ZWT Intervention 7363, ZWT Royalty 1503, ZWT Bellagio 1515, and bulls featured in this sale as Lots 85 and 86.

A maternal sister to the dam is featured as Lot 2 and others include sale-toppers.

**Birth weight 72 pounds, 205-day weight 556.**



## 142 ZWT ROBUST 2522

Birth Date: 09-02-2022 Bull +\*20734913 Tattoo: 2522

+\*BC Surveyor 680D

#\*BC Eagle Eye 110-7

BC Robust 0807

BC 2266 Prides Lass 4132 680

18456252 BC 327-8 CP Belle 0-807

\*BC Pure Pride 327-8

BC 607 CP Belle MF 807

#+\*S A V 707 Rito 9969

+Rito 707 of Ideal 3407 7075

+\*S A V Madame Pride 2551

BR Polly 8077-472

17294203 \*S A V Madame Pride 5290

#S A V 8180 Traveler 004

S A V Madame Pride 0075

CED	BW	WW	YW	SC	Milk	MB	RE	\$M	\$W
1+1	1+3.2	1+64	1+104	1+98	1+14	1+14	1+51	+40	+47

A unique and impressive herd sire prospect with worlds of potential sired by BC Robust 0807 from an outstanding donor dam by the Accelerated Genetics Pathfinder Sire SAV 707 Rito 9969.

This bull is a maternal brother to the heifers featured as Lots 22, 22A and 22B, as well as the bulls featured as Lots 101 and 102.

The maternal grandam is the top income-producing daughter of the maternal matriarch SAV Madame Pride 0075, who is best known as the dam of the all-time world record-selling bull SAV America 8018.

A maternal sister weaned her first calf with a ratio of 111.

**Birth weight 86 pounds, 205-day weight 532.**



**ZWT Robust 2522 – Lot 142**

**SAV Madame Pride 2551 – Dam of Lot 142.**

## 143 ZWT STOUT 2585

Birth Date: 09-13-2022 Bull +\*20730186 Tattoo: 2585

\*Sitz Stellar 726D

#\*Mohnen Substantial 272

\*Sitz Barricade 632F

\*SITZ Pride 200B

19078148 +\*SITZ Barbaramere Nell 765D

\*Sitz Superior 10971

Sitz Barbaramere Nell 73T

#+\*Coleman Charlo 0256

#\*O C C Paxton 730P

+\*Coleman Donna 4356

+Bohi Abigale 6014

18107536 +\*Coleman Donna 714

#\*Connealy Onward

+\*Coleman Donna 386

CED	BW	WW	YW	SC	Milk	MB	RE	\$M	\$W
1+5	1+2.1	1+70	1+121	1+112	1+21	1+50	1+52	+89	+64

A massive and powerful fall yearling herd sire prospect by the Genex sire Sitz Barricade 632F.

The proven donor dam featured at Montana Ranch is a full sister to the \$450,000 Coleman Bravo 6313, and she records a progeny birth ratio of 85 combined with a progeny weaning ratio of 101 on three calves along with progeny IMF and ribeye ratios of 105 and 101, respectively, on 33 head.

The maternal grandam is the \$290,000 valued ZWT second-generation donor Coleman Donna 714.

**Birth weight 84 pounds, 205-day weight 713.**



**ZWT Stout 2585 – Lot 143**

**Coleman Donna 4356 – Dam of Lot 143.**





**ZWT Summitt 6507 – Reference Sire A**

## A ZWT SUMMITT 6507

Birth Date: 04-24-2016 Bull #\*18561289 Tattoo: 6507  
 +Rito 707 of Ideal 3407 7075 #R R Rito 707  
 #\*S A V Renown 3439 Ideal 3407 of 1418 076  
 17633839 \*S A V Blackcap May 4136 #S A V 8180 Traveler 004  
 #S A V May 2397 #S A V May 2397  
 #\*Connealy Onward #Connealy Lead On  
 #\*Coleman Donna 714 Altune of Conanga 6104  
 15706882 +\*Coleman Donna 386 #Basin Rainmaker 654X  
 +KMK Donna J311

CED	BW	WW	YW	SC	Milk	MB	RE	\$M	\$W
+10	+7	+61	+106	+35	+22	+13	+70	+95	+68

### FOR REFERENCE ONLY.

The ST Genetics proven sire who is the \$40,000 top-selling bull of the 2017 ZWT Sale.

This son of the \$290,000 valued Coleman Donna 714 is by the Genex Pathfinder Sire SAV Renown 3439.

His progeny have excelled throughout the industry.



**ZWT Infusion F182 – Reference Sire C**

## B ZWT INTERVENTION 7363

Birth Date: 05-03-2017 Bull #\*18987241 Tattoo: 7363  
 #\*S A V International 2020 #\*S A V Harvester 0338  
 +\*S A V Impact 5595 #\*S A V Emblynette 5483  
 18256859 +S A V Emblynette 3301 #S A F 598 Bando 5175  
 #S A V Emblynette 7319  
 #Sitz Traveler 8180  
 #\*S A V Final Answer 0035 S A V Emulous 8145  
 #Sitz Tradition RLS 8702  
 \*E A Rose 918 M A S Bando Rose 4536  
 16460381 E A Rose 738

CED	BW	WW	YW	SC	Milk	MB	RE	\$M	\$W
+10	+3	+58	+98	+03	+31	+10	+35	+63	+65

### FOR REFERENCE ONLY.

The top-selling bull of the 2018 ZWT Sale where one-half interest sold for \$42,500.

This powerful bull offers a unique combination of calving-ease with length and performance, sired by the \$50,000 ZWT proven sire SAV Impact 5595 from the \$100,000 valued ZWT foundation donor EA Rose 918.



## C ZWT INFUSION F182

Birth Date: 03-17-2018 Bull #\*19382109 Tattoo: F182  
 #S A V Birthstone 8258 #S A V Bismarck 5682  
 \*ZWT Chaperone 4030 +S A V Emblynette 4408  
 17912962 +SIEBRING Elba 247 #S A V Prosperity 9131  
 +S A V Elba 801  
 #\*S A V Final Answer 0035 #Sitz Traveler 8180  
 #Sitz Tradition RLS 8702  
 \*E A Rose 918 S A V Emulous 8145  
 16460381 E A Rose 738 M A S Bando Rose 4536

CED	BW	WW	YW	SC	Milk	MB	RE	\$M	\$W
+6	+1.5	+61	+105	+80	+30	+54	+83	+50	+62

### FOR REFERENCE ONLY.

The top-selling Lot 1 bull of the 2019 ZWT Sale where one-half interest sold for \$15,000.

This son of the \$100,000 valued EA Rose 918 is a maternal brother to Reference Sire B and to a host of others including Brooking Bank Note 4040, as well as features of this sale who sell as Lots 2, 85 and 86, along with a host of other top-sellers.



**ZWT Intervention 7363 – Reference Sire B**

## D ZWT DECLARATION 1551

Birth Date: 09-23-2021 Bull #\*20191024 Tattoo: 1551  
 #\*Coleman Charlo 0256 #\*O C C Paxton 730P  
 +\*Coleman Bravo 6313 +Bohi Abigale 6014  
 18734838 +\*Coleman Donna 714 #\*Connealy Onward  
 #\*Coleman Donna 386  
 #\*Quaker Hill Rampage 0A36 #MCC Daybreak  
 #\*Wilks Henrietta Pride 5208 +\*QHF Blackcap 6E2 of 4V16 4355  
 18408370 +\*SQ 12Y of Henrietta Pride +\*Rito 6EM3 of 4L1 Emblazon  
 +\*Sitz Henrietta Pride 643T

CED	BW	WW	YW	SC	Milk	MB	RE	\$M	\$W
+14	+1.0	+76	+135	+29	+30	+28	+1.04	+85	+78

### FOR REFERENCE ONLY.

The top-selling bull of the 2022 Cowboy Logic Sale in Georgia who originally sold as a calf at side of his massive donor dam in the 2021 ZWT Sale where they sold one-half interest for \$21,000 as the top-selling cow/calf pair.

This exciting bull is sired by the \$450,000 Coleman Bravo 6313.



**ZWT Declaration 1551 – Reference Sire D**





**SAV Bloodline 9578 – Reference Sire E**

## E SAV BLOODLINE 9578

Birth Date: 12-29-2018 Bull +\*19542324 Tattoo: 9578

#+\*Coleman Charlo 0256

#\*O C C Paxton 730P

+\*S A V Rainfall 6846

+Bohi Abigale 6014

18578963 \*S A V Blackcap May 4136

#S A V 8180 Traveler 004

#+\*S A V 707 Rito 9969

+Rito 707 of Ideal 3407 7075

#\*S A V Emblynette 2369

BR Polly 8077-472

17249196 +\*S A V Emblynette 7566

#S A V Net Worth 4200

#S A V Emblynette 7261

CED	BW	WW	YW	SC	Milk	MB	RE	\$M	\$W
-7	+4.4	+76	+141	+58	+19	+66	+40	+28	+46

### FOR REFERENCE ONLY.

The \$250,000 top-selling lead-off bull of the 2020 SAV Sale selected by ZWT Ranch and their partners who has become a proven high-performance sire with outstanding, powerful daughters in production.

This son of the \$460,000 Select Sires proven sire SAV Rainfall 6846 is from the high-income-producing Pathfinder Dam SAV Emblynette 2369 who combines a progeny birth ratio of 97 with a progeny weaning ratio of 103 on eight natural calves and a progeny yearling ratio of 105 on five head along with an amazing progeny IMF ratio of 121 on 118 head.



**SAV Riverside 2381 – Reference Sire G**

## F SAV BLUEPRINT 2933

Birth Date: 12-17-2021 Bull +20478145 Tattoo: 2933

+\*S A V Rainfall 6846

#+\*Coleman Charlo 0256

+\*S A V Bloodline 9578

\*S A V Blackcap May 4136

19542324 \*S A V Emblynette 2369

#+\*S A V 707 Rito 9969

+\*S A V Emblynette 7566

#+\*S A V Renown 3439

+Rito 707 of Ideal 3407 7075

\*S A V Emblynette 5377

\*S A V Blackcap May 4136

18141832 \*S A V Emblynette 0084

#+S A V Bismarck 5682

+\*S A V Emblynette 8411

CED	BW	WW	YW	SC	Milk	MB	RE	\$M	\$W
-1	+2.6	+66	+118	-.04	+24	+26	+72	+48	+55

### FOR REFERENCE ONLY.

The powerful ZWT junior herd sire selected as a \$50,000 highlight of the 2023 Schaff Angus Valley Sale.

This son of the \$250,000 SAV Bloodline 9578 is linebred through the herd sire producing Emblynette and Blackcap May families with a pedigree anchored through the maternal brothers SAV Rainfall 6846 and SAV Renown 3439.



## G SAV RIVERSIDE 2381

Birth Date: 03-25-2022 Bull +\*20480732 Tattoo: 2381

#+\*Coleman Charlo 0256

#\*O C C Paxton 730P

+\*S A V Rainfall 6846

+Bohi Abigale 6014

18578963 \*S A V Blackcap May 4136

#S A V 8180 Traveler 004

#+S A V May 2397

#+\*S A V Resource 1441

+Rito 707 of Ideal 3407 7075

#\*S A V Madame Pride 4407

\*S A V Blackcap May 4136

17824103 +\*S A V Madame Pride 0235

#+S A V 004 Density 4336

S A V Madame Pride 0075

CED	BW	WW	YW	SC	Milk	MB	RE	\$M	\$W
+9	+5	+59	+113	+1.10	+19	+45	+72	+49	+50

### FOR REFERENCE ONLY.

The popular young ZWT junior herd sire selected as the \$47,500 co-top-selling bull of his sire group on the 2023 SAV Sale.

This promising young bull is backed by the maternal brothers SAV Rainfall 6846 and SAV Resource 1441 from the powerful Pathfinder Dam SAV Madame Pride 4407.

His full brother, SAV Downpour, is the \$100,000 top-selling bull of his sire group in the 2019 SAV Sale where he recorded the heaviest 365-day weight.



**SAV Blueprint 2933 – Reference Sire F**

## H KLA RESPECT 186

Birth Date: 09-08-2020 Bull 20047598 Tattoo: 186

#+\*S A V Renown 3439

+Rito 707 of Ideal 3407 7075

\*S A V Renew 8132

\*S A V Blackcap May 4136

19250927 +\*S A V Blackcap May 4593

#\*Connealy Cavalry 1149

\*S A V Blackcap May 8051

#S A V Net Worth 4200

#S A V 8180 Traveler 004

+KLA Forever Lady 7190

+S A V May 2410

18852645 \*Kla Forever Lady 125

#\*S Objective T510 0T26

+\*Sunset Valley FRVR Lady 8005

CED	BW	WW	YW	SC	Milk	MB	RE	\$M	\$W
-6	+5.4	+94	+155	+1.34	+27	+75	+95	+66	+73

### FOR REFERENCE ONLY.

The ZWT herd sire selected as the \$120,000 record-selling Lot 1 bull of the 2020 Albrecht/Penz President's Day Sale where he recorded both the heaviest 205 and 365-day weights, earning individual weaning and yearling ratios of 132 and 122, respectively, along with individual IMF and ribeye ratios of 109 and 114, respectively.

This son of the ST Genetics sire SAV Renew 8132 is from a powerful daughter of the Pathfinder Sire SAV Net Worth 4200 with a progeny weaning ratio of 115 on four calves and a progeny yearling ratio of 114 on three head.



**KLA Respect 186 – Reference Sire H**





**Brooking Gold Coin 8069 – Reference Sire I**

## BROOKING GOLD COIN 8069

Birth Date: 01-22-2018 Bull #\*19377658 Tattoo: 69F

#\*Connealy Earnan 076E #\*Connealy Consensus  
 \*Brooking Bank Note 4040 +\*Brazila of Conanga 3991 839A  
 18069951 \*E A Rose 918 #\*S A V Final Answer 0035  
 E A Rose 738

#\*S A V Harvester 0338 #\*S A V Heritage 6295  
 S A V Emblynette 4223 +\*S A V Emblynette 7749  
 17824171 +S A V Emblynette 1786 #\*S A V Bismarck 5682  
 #\*S A V Emblynette 1181

CED	BW	WW	YW	SC	Milk	MB	RE	\$M	\$W
+2	+3.3	+68	+114	+1.02	+17	+40	+31	+56	+53

### FOR REFERENCE ONLY.

This ZWT featured sire by the proven AI sire Brooking Bank Note 4040, produced in the embryo program at Brooking Angus Ranch from the Emblynette family.

This bull records a progeny weaning ratio of 102 on his first 48 calves along with a progeny IMF ratio of 105 on 20 head.



**Lafins Marvel 1801 – Reference Sire K**

## BROOKING MAJOR 7103

Birth Date: 01-31-2017 Bull #\*19148779 Tattoo: 103E

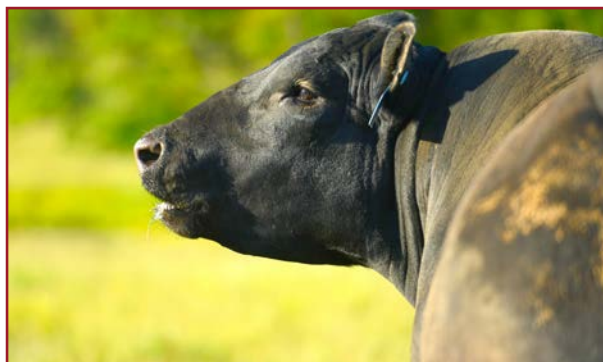
#\*S A V Harvester 0338 #\*S A V Heritage 6295  
 #\*S A V International 2020 +\*S A V Emblynette 7749  
 17318795 #\*S A V Emblynette 5483 #S A V 8180 Traveler 004  
 #S A V Emblynette 7260  
 #\*Soo Line Motive 9016 HF Kodiak 5R  
 \*Soo Line Rose 1019 TLA Beauty 5R  
 19105893 \*E A Rose 918 #\*S A V Final Answer 0035  
 E A Rose 738

CED	BW	WW	YW	SC	Milk	MB	RE	\$M	\$W
-1	+3.2	+61	+104	+95	+31	+25	+73	+64	+60

### FOR REFERENCE ONLY.

The ZWT featured herd sire selected from Brooking Angus Ranch in Saskatchewan, Canada, by the \$400,000 Pathfinder Sire SAV International 2020.

The donor dam of this bull is the result of mating the \$55,000 Pathfinder Sire Soo Line Motive 9016 with the \$100,000 valued EA Rose 918, and she is also the dam of Lots 3 and 141 in this sale.



**Brooking Major 7103 – Reference Sire J**

## J&J WEIGH UP 294

Birth Date: 02-22-2014 Bull 18004546 Tattoo: 294

#\*Sitz Upward 307R #\*Connealy Onward  
 #\*Plattmeyer Weigh Up K360 #Sitz Henrietta Pride 81M  
 16692552 #Barbara of Plattmeyer 337 #G A R Retail Product  
 Barbara of Plattmeyer 311  
 #TC Romeo 917 #\*Connealy Right Answer 746  
 J & J Miss Georgina 294 TC Chloe 7036  
 17407507 J&J Miss Georgina 927 Hoff Steeler SC 333 196  
 #J&J Georgina 720

CED	BW	WW	YW	SC	Milk	MB	RE	\$M	\$W
+8	+0	+70	+127	+1.53	+28	+78	+57	+49	+66

### FOR REFERENCE ONLY.

The ZWT proven sire selected as a top-selling herd sire in the Badger Creek Dispersal in Kansas.

This well-balanced, calving-ease sire is by the Select Sires Pathfinder Sire Plattmeyer Weigh Up K360 from a dam by the Pathfinder Sire TC Romeo 917.



**J&J Weigh Up 294 – Reference Sire L**

## LAFINS MARVEL 1801

Birth Date: 01-22-2018 Bull #\*19091613 Tattoo: 1801

#\*S A V Brilliance 8077 #\*S A V Bismarck 5682  
 #\*P V F Insight 0129 S A V Blackcap May 5270  
 16805884 +\*P V F Missie 790 #\*P V F New Horizon 001  
 P V F Miss Raptor 024  
 +EXAR Consensus 1972B #\*Connealy Consensus 7229  
 Lafins Galaxie 3332 B C Blackbird Emblazon 139  
 17806902 Lafins Galaxie 1241 Lafins Flash Point 7232  
 Lafins Galaxie 3124

CED	BW	WW	YW	SC	Milk	MB	RE	\$M	\$W
+6	+2.2	+60	+109	+44	+17	+09	+1.28	+69	+46

### FOR REFERENCE ONLY.

The ZWT featured herd sire who reigned as the undefeated Grand Champion Bull of the 2019 Iowa State Fair, the 2019 Nebraska State Fair and the 2019 Kansas State Fair, as well as being a popular First Prize winner of the 2022 National Western Stock Show.

This bull also gained the admiration of cattlemen while on display at the 2021 National Cattlemen's Congress. His progeny display an appealing combination of traits that make them continue to grow in popularity.





Deer Valley Big Jon 022 – Reference Sire M

## M DEER VALLEY BIG JON 022

Birth Date:	02-25-2020	Bull #	19738682	Tattoo:	022
#*Basin Payweight 1682		#*Basin Payweight 006S			
+*Deer Valley Growth Fund		21AR O Lass 7017			
18827828		#*Plattmire Weigh Up K360			
		+Deer Valley Rita 9457			
#*JMB Traction 292		#*Sitz Top Game 561X			
Stika Erica 0743		*JMB Emulota 013			
19535520		*Connealy In Sure 8524			
		Circle S Erica 1133			

CED	BW	WW	YW	SC	Milk	MB	RE	\$M	\$W
+17	-3	+68	+132	+41	+29	+24	+73	+44	+67

### FOR REFERENCE ONLY.

This ZWT featured calving-ease sire was selected from Deer Valley Ranch in Tennessee.

The popular sire of this bull currently leads the breed for annual registrations.

The dam of this bull is backed by the Pathfinder Sires J&B Traction 292 and Connealy In Sure 8524.



ZWT Royalty 1503 – Reference Sire O

## N FREYS DJANGO 0147

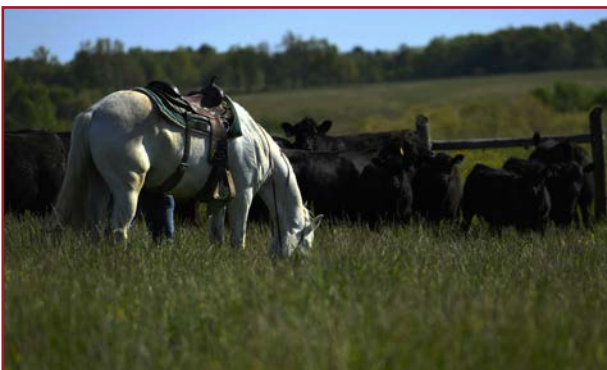
Birth Date:	01-26-2020	Bull #	19824762	Tattoo:	0147
#*HA Cowboy Up 5405		*HA Outside 3008			
*Frys Cowboy Logic		#*HA Blackcap Lady 1602			
19256275		#*WK Bobcat			
		#F A R Princess 214X			
#*Frys Appearance		Young Dale Xcaliber 32X			
FAR Princess 7278		F A R Missie 62Y			
18890297		*Vision Unanimous 1418			
		F A R Princess 214Z			

CED	BW	WW	YW	SC	Milk	MB	RE	\$M	\$W
+11	-2	+67	+117	+1.29	+24	+1.6	+37	+45	+62

### FOR REFERENCE ONLY.

The ZWT herd sire selected as the \$20,000 second top-selling bull of the 2021 Frey Sale in North Dakota.

This bull has an individual birth ratio of 99 combined with individual weaning and yearling ratios of 108 and 106, respectively, along with an individual ribeye ratio of 108. Sired by the Select Sires bull Freys Cowboy Logic from a dam with a progeny weaning ratio of 107 on three calves.



## O ZWT ROYALTY 1503

Birth Date:	09-01-2021	Bull #	20304543	Tattoo:	1503
+*S A V Rainfall 6846		#*Coleman Charlo 0256			
+*S A V Bloodline 9578		*S A V Blackcap May 4136			
19542324		#*S A V 707 Rito 9969			
		+*S A V Emblynette 7566			
#*S A V Final Answer 0035		#Sitz Traveler 8180			
*E A Rose 918		S A V Emulous 8145			
16460381		#Sitz Tradition RLS 8702			
		M A S Bando Rose 4536			

CED	BW	WW	YW	SC	Milk	MB	RE	\$M	\$W
-1	+3.3	+67	+115	+17	+31	+5.9	+4.3	+40	+61

### FOR REFERENCE ONLY.

The \$20,000 top-selling bull of the 2022 ZWT Sale selected by Buford Ranches of Oklahoma.

This full brother to the featured Lot 85 bull in this sale is from a successful mating by the \$250,000 SAV Bloodline 9578 with the \$100,000 valued EA Rose 918.

Maternal brothers include a multitude of noted sires as well as top-selling individuals.



Freys Django 0147 – Reference Sire N

## P ZWT EMULATION 6143

Birth Date:	03-01-2016	Bull #	18506701	Tattoo:	6143
#*N Bar Emulation EXT		#Emulation N Bar 5522			
+*Sinclair Emulation XXP		N Bar Primrose 2424			
15355048		#*N Bar Emulation EXT			
		#N Bar Primrose 2429			
#Basin Rainmaker 654X		#Basin Rainmaker D S 380U			
+*Coleman Donna 386		Basin Bardolene 423U			
14800153		#D H D Traveler 6807			
		+Brooks Donna 319			

CED	BW	WW	YW	SC	Milk	MB	RE	\$M	\$W
+5	+5	+54	+102	+0.4	+29	+4.4	+0.9	+57	+54

### FOR REFERENCE ONLY.

The ZWT proven sire backed by generations of foundation genetics.

This son of the Pathfinder Sire Sinclair Emulation XXP was produced from the \$200,000 valued ZWT foundation donor Coleman Donna 386.



ZWT Emulation 6143 – Reference Sire P





SAV Rainfall 6846



Bar-E-L Natural Law 52Y



Coleman Glacier 041



KR Mojo 8520



SAV Renovation 6822



SAV Net Worth 4200



SAV Engage 0859



Sitz Barricade 632F



BC Robust 0807



LAR Man In Black



Tehama Tahoe B767



Musgrave 316 Colossal 137



# *A High Quality Offering From ZWT*

**100 Commercials:  
60 Spring Bred Baldy Heifers  
20 Spring Bred Black Heifers  
20 Fall Cow/Calf Pairs**







FULLY *Loaded*

ANGUS BULL & FEMALE SALE

Noon / Thursday / **November 9, 2023**  
Crossville, TN

*Selling*

**100 Registered  
Angus Females:**

25 Spring Yearling Bred  
Heifers  
20 Fall Yearling Heifers  
15 Spring ET Heifers  
20 Fall Cow/Calf Pairs  
10 Spring Bred Cows  
and Heifers  
5 ET Features

**60 Registered  
Angus Bulls:**

40 Coming-Two-Year-olds  
15 Two-Year-Olds  
5 Fall Yearlings

**100 Commercials:**

60 Spring Bred Baldy Heifers  
20 Spring Bred Black Heifers  
20 Fall Cow/Calf Pairs

**ZWT** RANCH Tony, Mary, Zach, Wil and  
Tate Mayes, Owners  
1253 McClanahan Drive  
Crossville, TN 38571

PRSRT  
FIRST-CLASS  
U.S. POSTAGE  
**PAID**  
St. Joseph, MO  
Permit #2017

